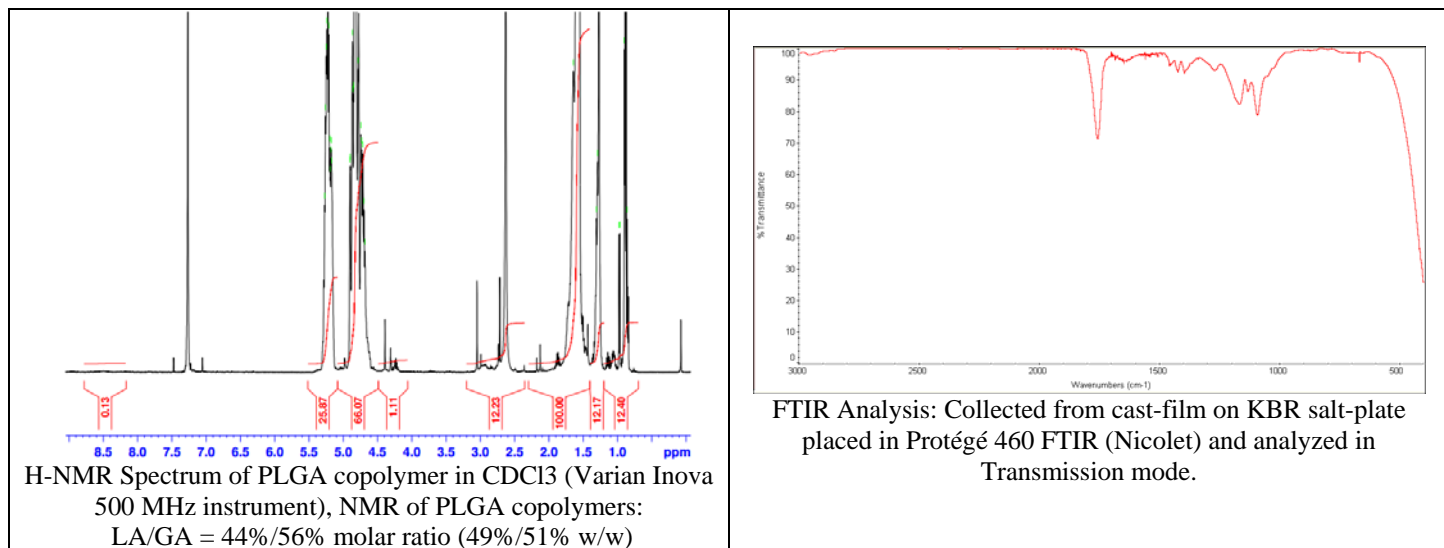
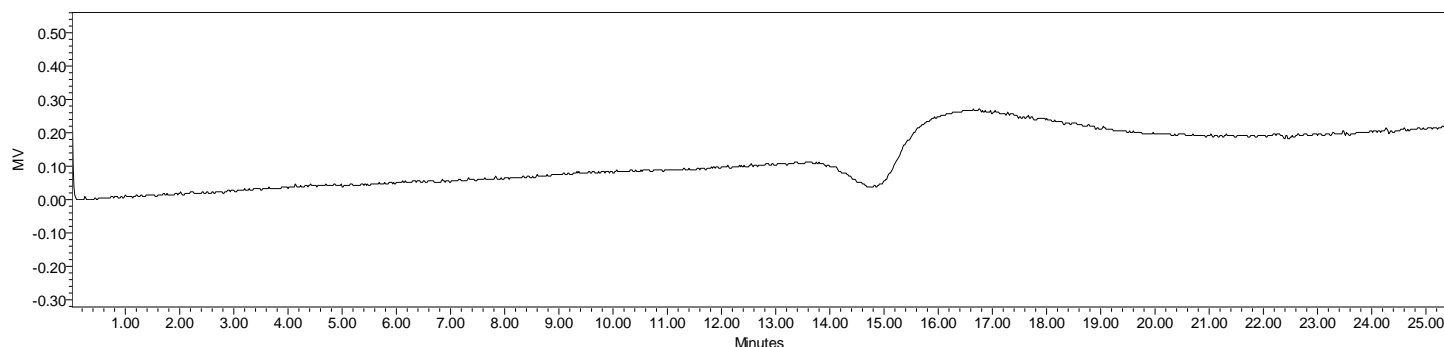


Product Name: Poly(lactic-co-glycolic) copolymers amine endcap (succinic dihydrazide)
 (LA:GA 50:50, $M_n \sim 45,000\text{-}55,000$ Da) (Lot#: 60719DWW-B)



• GPC analysis of PLGA copolymers



Analysis Method: Waters Breeze 2 system with 1 ml/min DCM flow across three GPC columns (300 x 7.6 mm, mixed porosity). Detection via refractive index, calibrated against polystyrene standards.

Polymer	M_n (from GPC)	M_w (from GPC)	PDI
PLGA-NH ₂	49,017	63,301	1.29

• Structure of PLGA-NH₂ copolymer

