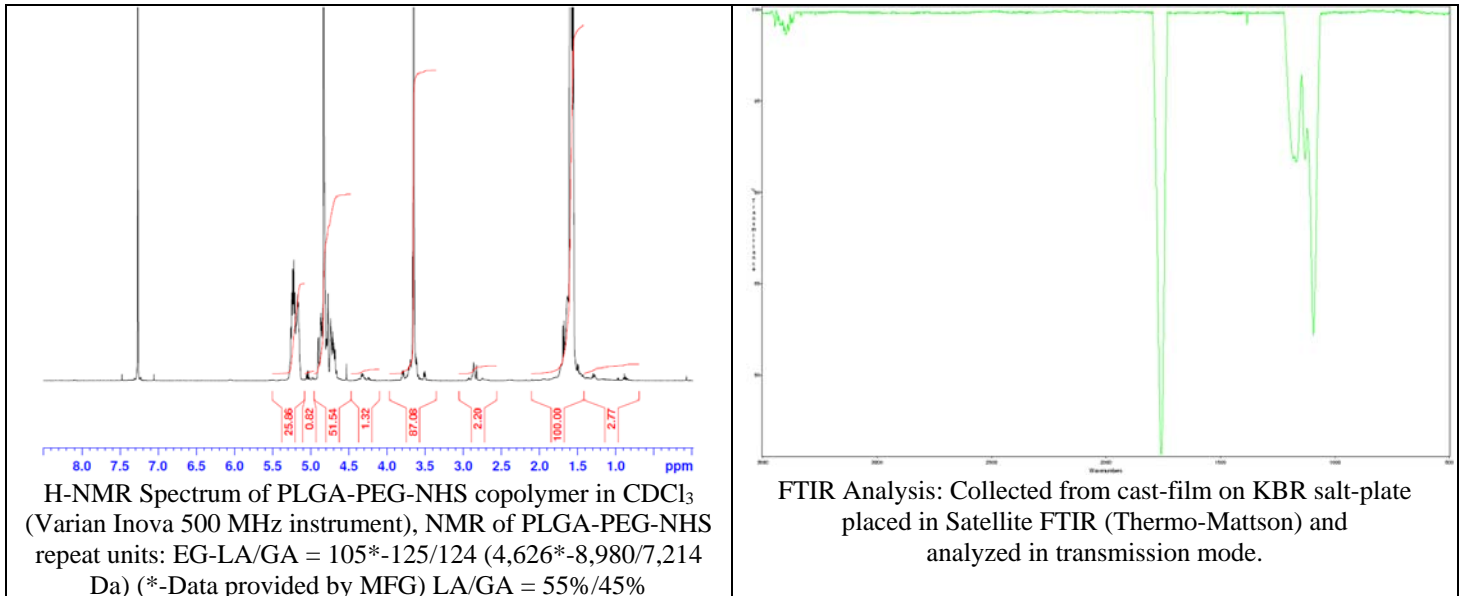
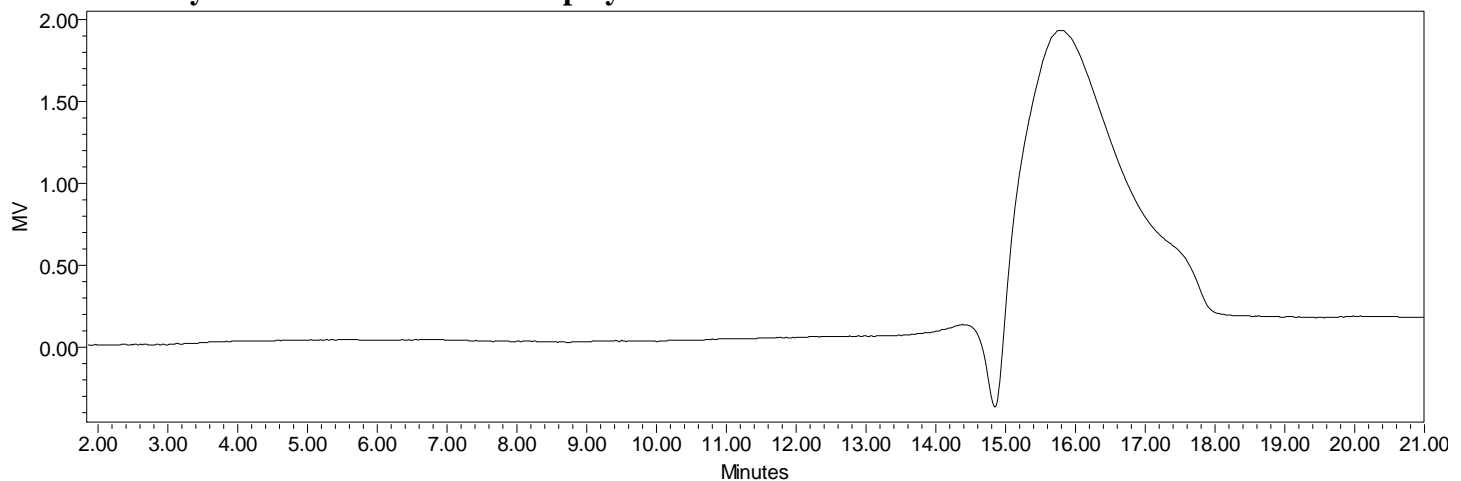


# No. AI111 Certificate of Analysis

Product Name: Poly(lactide-co-glycolide)-b-Poly(ethylene glycol)-N-hydroxysuccinimide endcap (~20,000 Da-5,000 Da, 50:50 LA:GA) (Lot#: 60620BPR-A)



## • GPC analysis of PLGA-PEG-NHS copolymers



Analysis Method: Waters Breeze 2 system with 1 ml/min DCM flow across three Phenogel 5um columns (Phenomenex). Detection via refractive index, calibrated against polystyrene standards.

Polymer	M <sub>n</sub> (from GPC)	M <sub>w</sub> (from GPC)	PDI
PLGA-PEG-NHS	35,881	46,072	1.28
HO-PEG-COOH*	Average M <sub>n</sub> by GFC-4,600 Da *		

\* - data provided by MFG

## • Structure of PLGA-PEG-NHS copolymers

