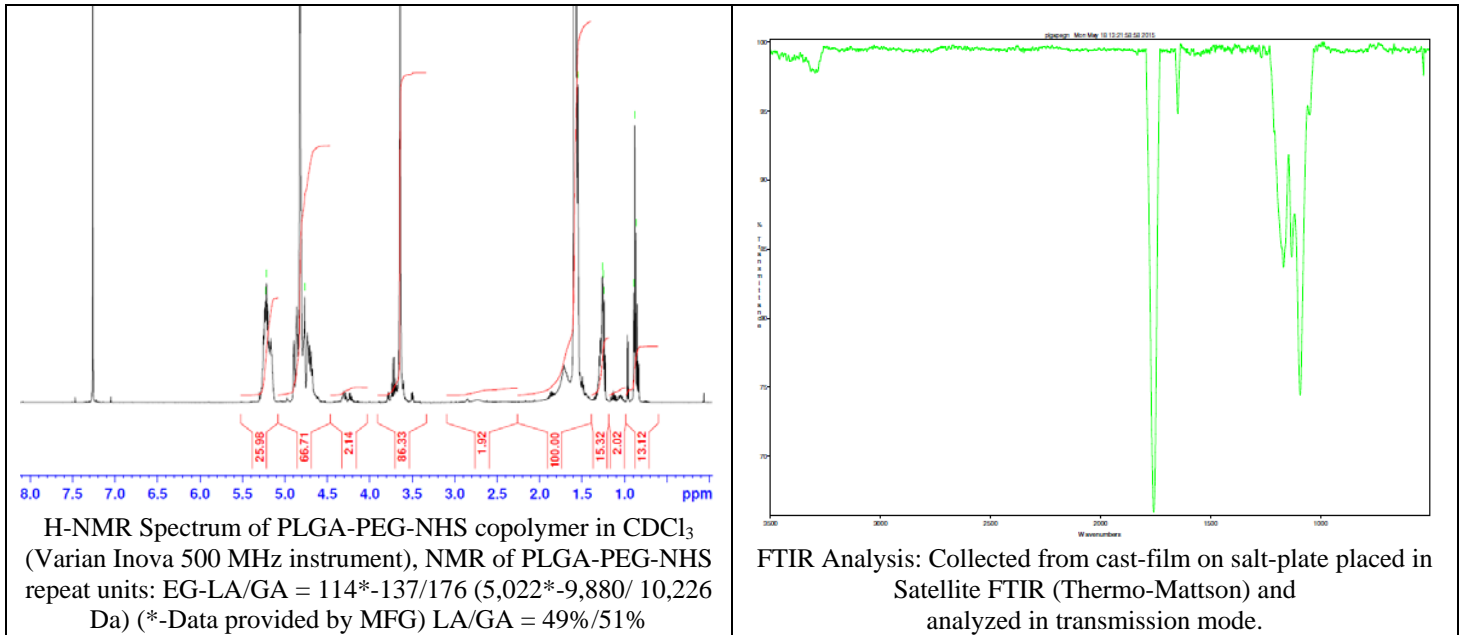
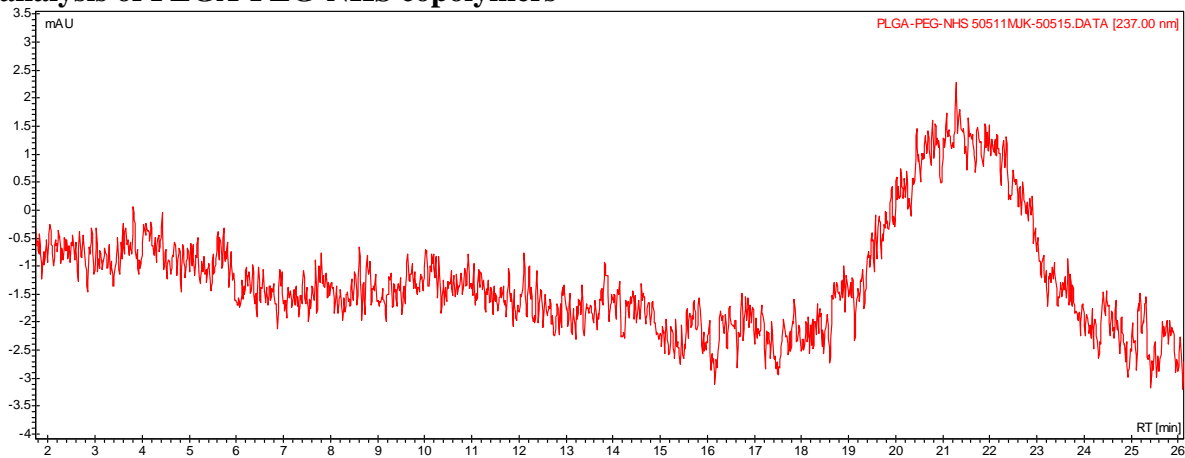


No. AI111 Certificate of Analysis

Product Name: Poly(lactide-co-glycolide)-b-Poly(ethylene glycol)-N-hydroxysuccinimide endcap (~20,000 Da-5,000 Da, 50:50 LA:GA) (Lot#: 50511MJK) (REV:A NMR data)



- GPC analysis of PLGA-PEG-NHS copolymers**



Analysis Method: Varian Prostar system with 1 ml/min DCM flow across two Phenogel 5 μm columns and one PLgel Resipore column (Agilent). Detection via UV/Vis, calibrated against polystyrene standards.

Polymer	M _n (from GPC)	M _w (from GPC)	PDI
PLGA-PEG-NHS	10,075	23,485	2.33
HO-PEG-COOH*	Average M _n by GFC-5000 Da *		

* - data provided by MFG

- Structure of PLGA-PEG-NHS copolymers**

