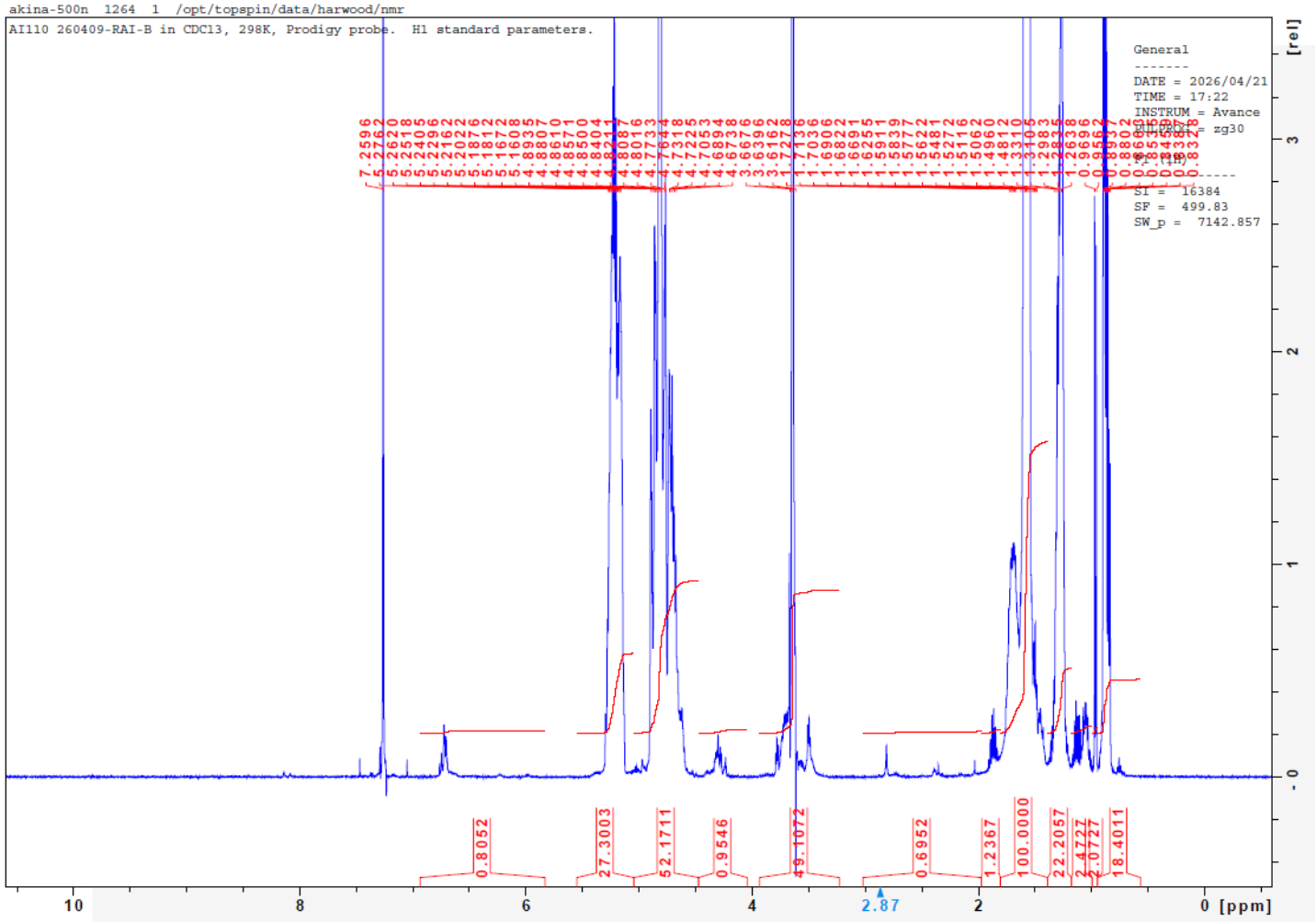


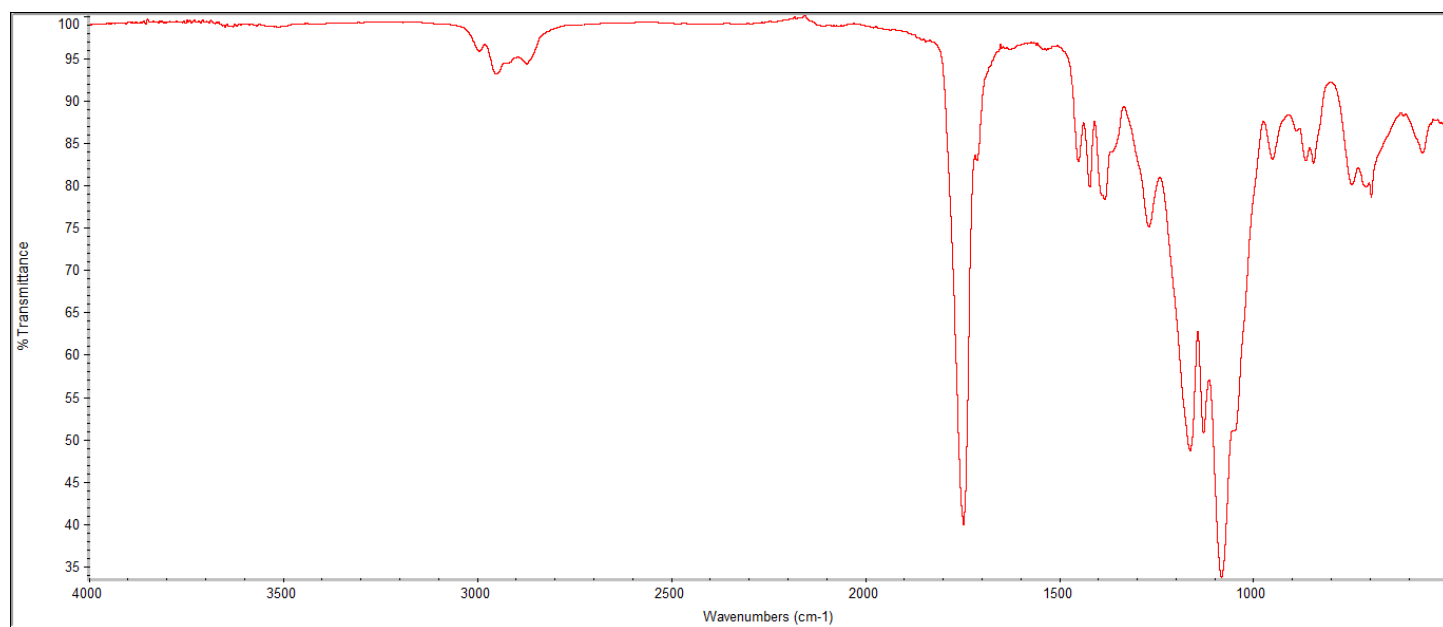
No. AI110 Certificate of Analysis

Product Name: Poly(lactide-co-glycolide)-b-Poly(ethylene glycol)-Maleimide
 Copolymers ($M_w \sim 30,000-5,000\text{Da}$, LA:GA 50:50) (Lot#: 260409RAI-B)

H-NMR

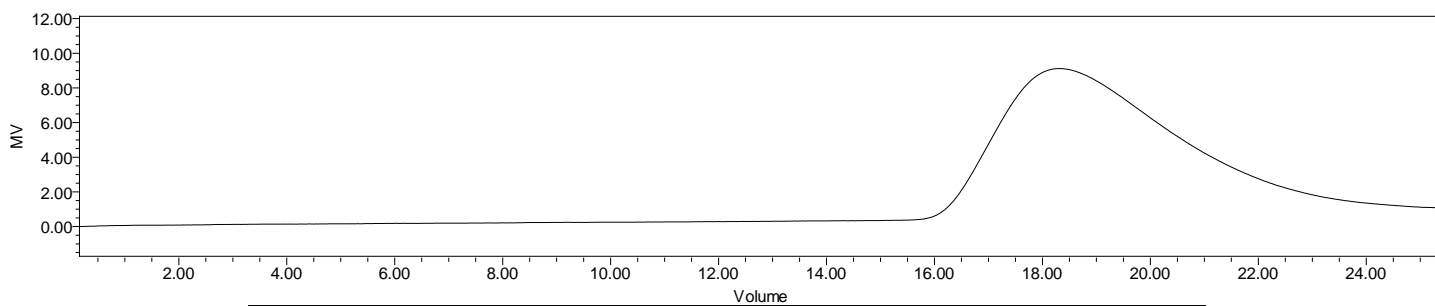


FTIR



FTIR Analysis: Collected from IS5 ID7-ATR spectrometer (Thermo Scientific) and analyzed in transmission mode.

GPC-ES



Polymer	M _n (from GPC)	M _w (from GPC)	PDI
PLGA-PEG-Mal	33,371	44,482	1.33
PEG-precursor*	M _n =4500 Da		

GPC-ES Analysis Method: Waters Breeze 2 system with 1 ml/min THF flow across three GPC columns. Detection via refractive index, calibrated against polystyrene standards. *from MFG data

