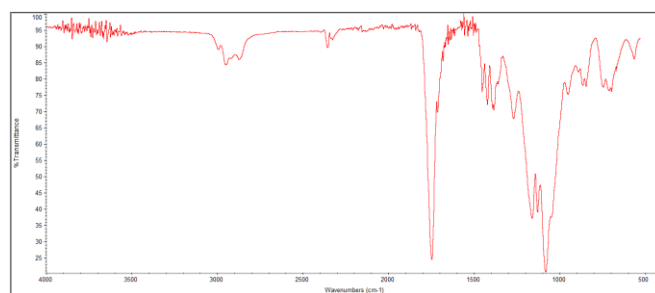
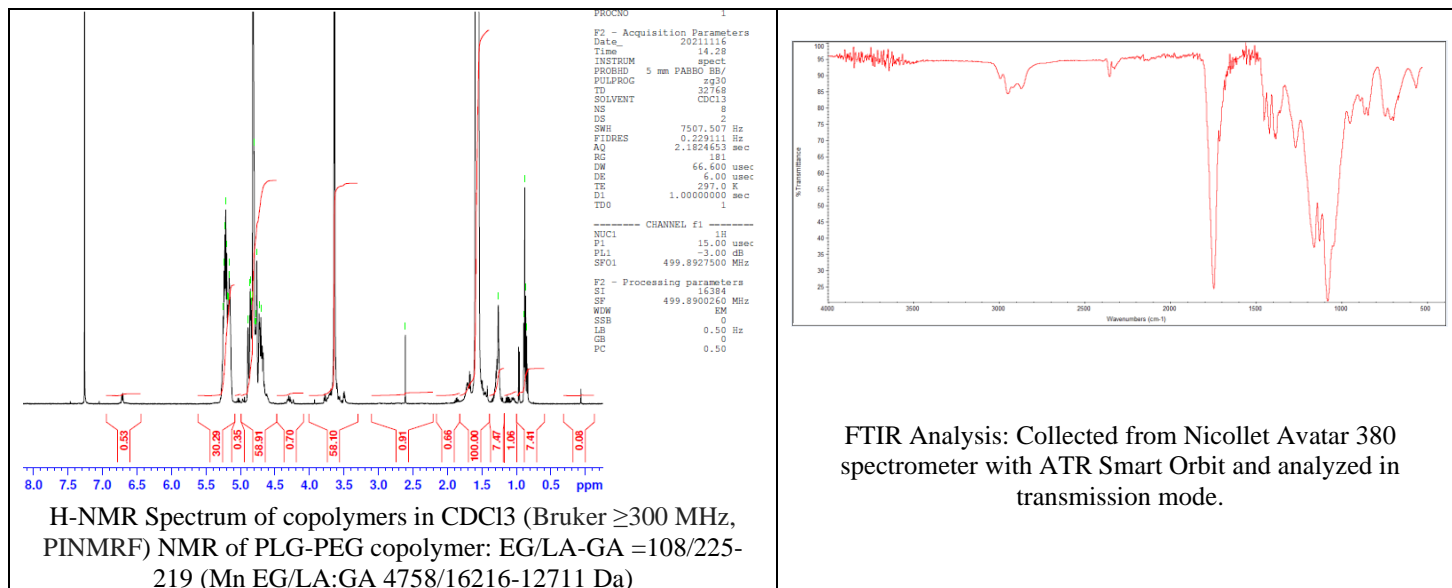


No. AI110

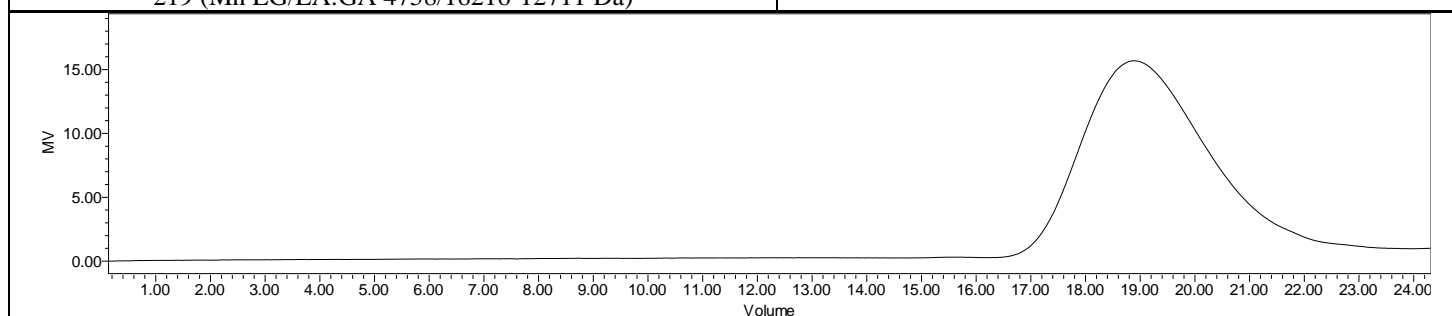
Certificate of Analysis



Product Name: Poly(lactide-co-glycolide)-b-Poly(ethylene glycol)-Maleimide
Copolymers ($M_w \sim 30,000-5,000\text{Da}$, LA:GA 50:50) (Lot#: 211108BRD-A)



FTIR Analysis: Collected from Nicolet Avatar 380 spectrometer with ATR Smart Orbit and analyzed in transmission mode.



GPC-ES Analysis Method: Waters Breeze 2 system with 1 ml/min THF flow across three GPC columns. Detection via refractive index, calibrated against polystyrene standards.

| Polymer | M_n (from GPC) | M_w (from GPC) | PDI |
|----------------|------------------|------------------|------|
| PLGA-PEG-MAL | 38,351 | 57,445 | 1.50 |
| PEG-precursor* | | 4750* | |

*- from MFG data

Structure of PLGA-PEG-Mal copolymers

