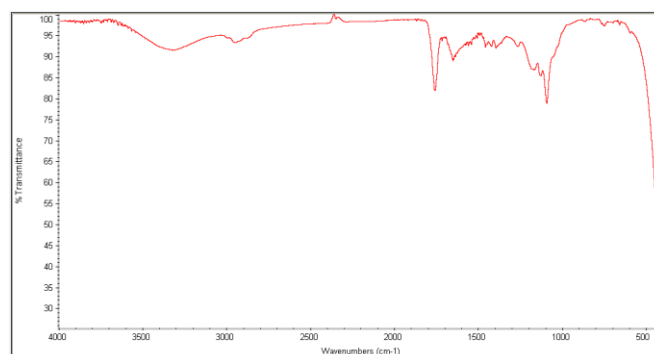
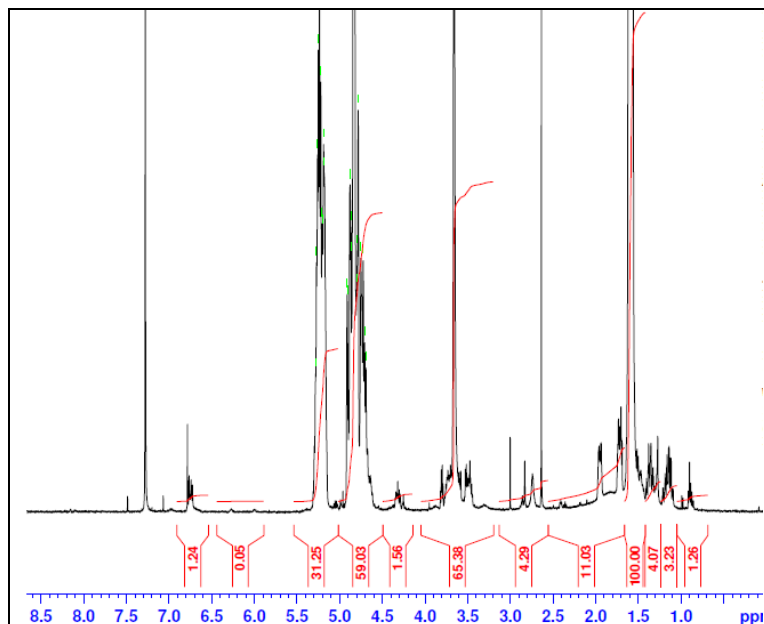


No. AI110

Certificate of Analysis

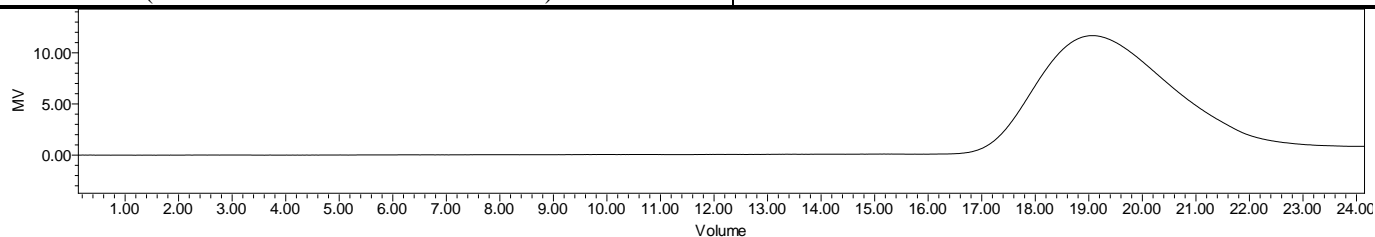


Product Name: Poly(lactide-co-glycolide)-b-Poly(ethylene glycol)-Maleimide
Copolymers ($M_w \sim 30,000-5,000\text{Da}$) (Lot#: 191025RAI-C)



FTIR Analysis: Collected from cast-film on KBr salt-plate placed in Nicolet Avatar 320 spectrometer and analyzed in transmission mode.

H-NMR Spectrum of copolymers in CDCl_3 (Bruker ≥ 300 MHz, PINMRF) NMR of PLGA copolymer: EG/LA-GA = 109*/208-197 (Mn EG/LA:GA 4802*/15005-11424)



GPC Analysis Method: Waters Breeze 2 system with 1 ml/min THF flow across three GPC columns. Detection via refractive index, calibrated against polystyrene standards.

Polymer	M_n (from GPC)	M_w (from GPC)	PDI
PLGA-PEG-Mal	33,255	49,798	1.50
PEG-Precursor*	4800*		

*- from MFG data

Structure of PLGA-PEG-Mal copolymers

