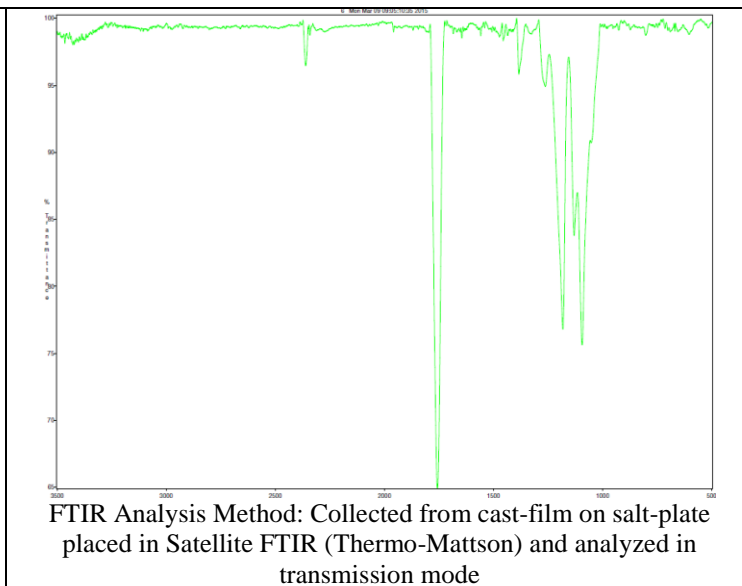
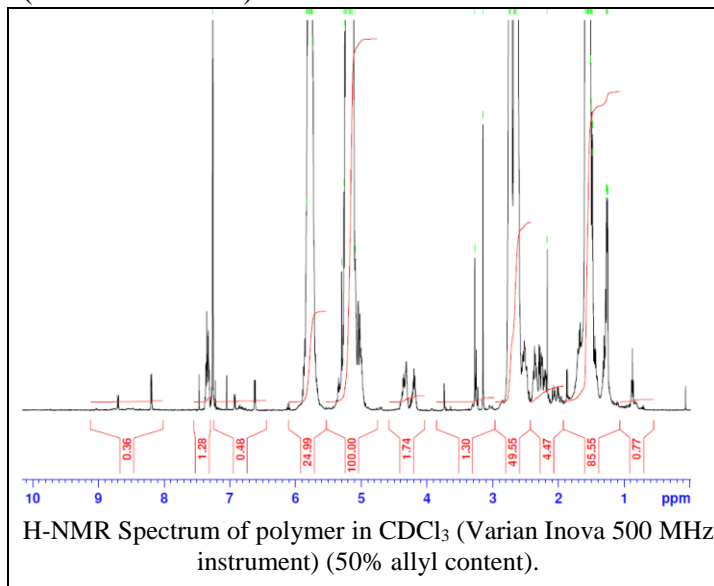


# No. AI108

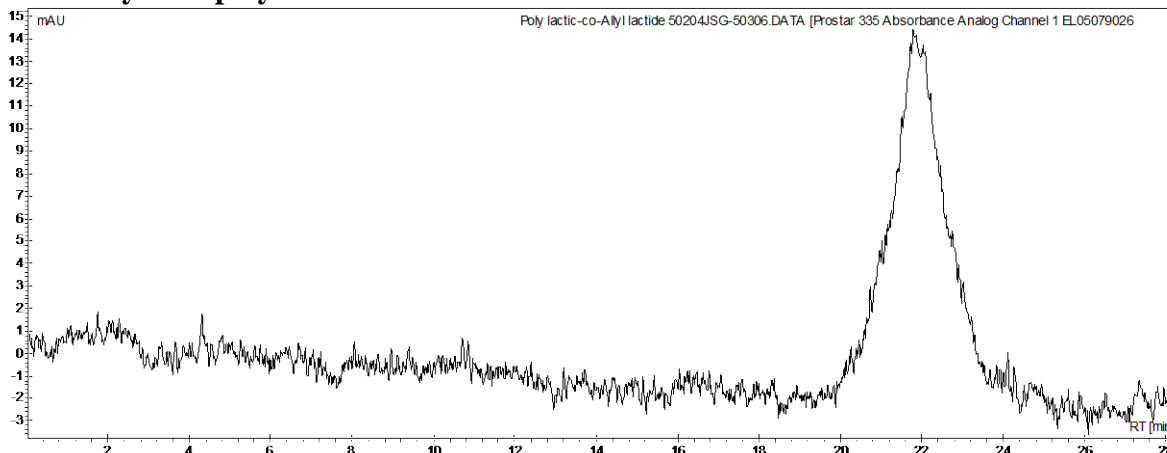
# Certificate of Analysis



Product Name: Poly(lactide-co-allyl lactide) (Mn 5,000-10,000Da ~50% allyl lactide)  
(Lot#: 50204JSG)



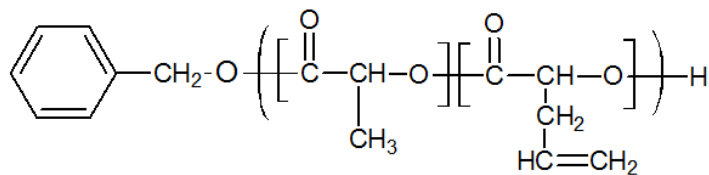
- **GPC analysis of polymer**



Analysis Method: Varian Prostar system with 1 ml/min DCM flow across two Phenogel 5 μm columns and one Resipore column (Agilent). Detection via UV/Vis, calibrated against polystyrene standards.

| Polymer   | M <sub>n</sub> (from GPC) | M <sub>w</sub> (from GPC) | PDI  |
|-----------|---------------------------|---------------------------|------|
| allyl-PLA | 6263                      | 7989                      | 1.28 |

- **Structure of allyl-PLA polymer**



Material provided for research use only. Not for human use.