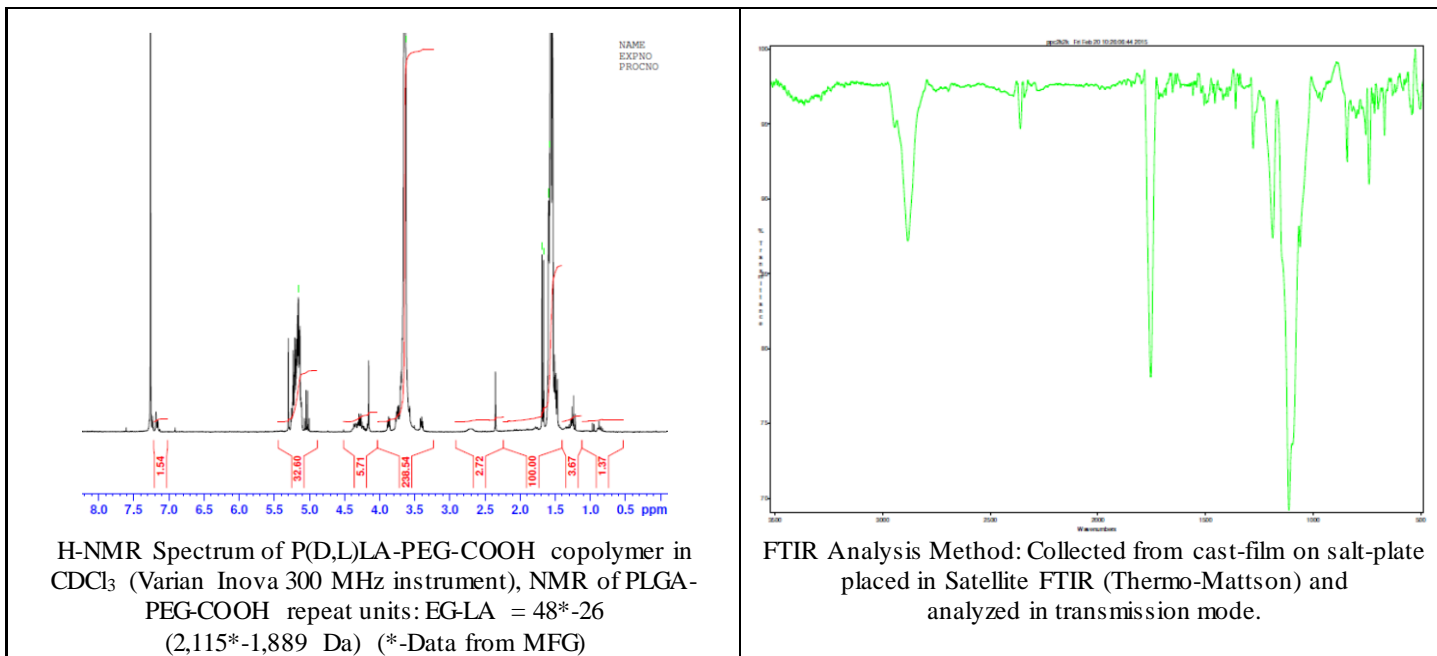
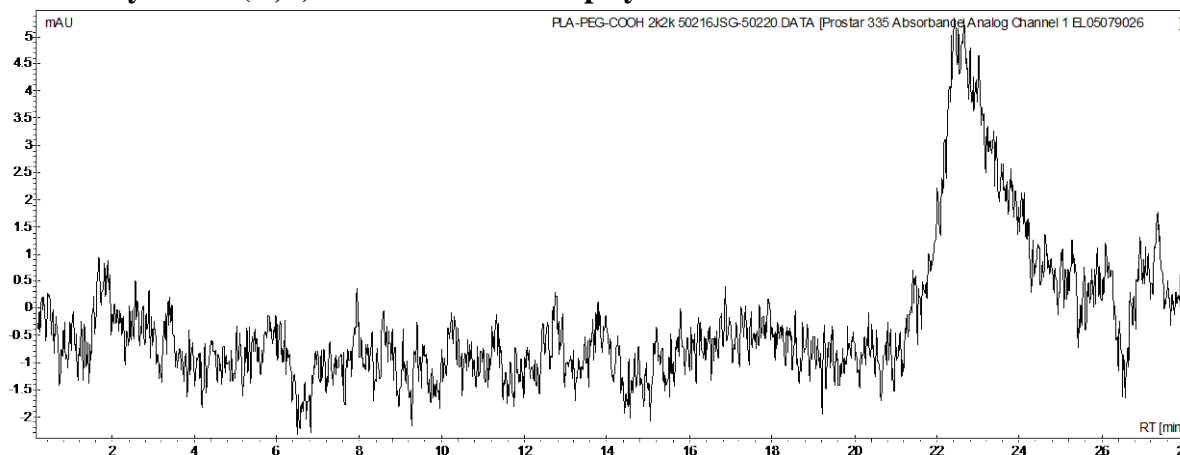


Product Name: Poly(D,L-lactide)-*b*-Poly(ethylene glycol)-Carboxylic acid endcap
($M_w \sim 2,000$ - $2,000$ Da) (Lot#: 50216JSG)



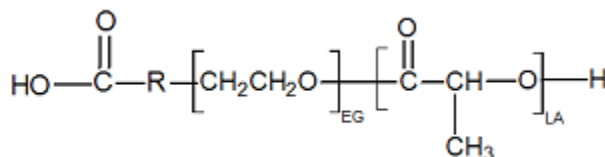
- GPC analysis of P(D,L)LA-PEG-COOH copolymers**



| Polymer | M_n (from GPC) | M_w (from GPC) | PDI |
|-------------------|----------------------------------|------------------|------|
| P(D,L)LA-PEG-COOH | 2880 | 4028 | 1.40 |
| HO-PEG-COOH* | Average M_n by GFC – 2,100 Da* | | |

*-data provided by MFG

- Structure of P(D,L)LA-PEG-COOH copolymers**



Material provided for research use only. Not for human use.

PolySciTech Division of Akina, Inc. | 3495 Kent Avenue, West Lafayette, IN 47906

765-464-0390 | www.polysciotech.com

For research use only.