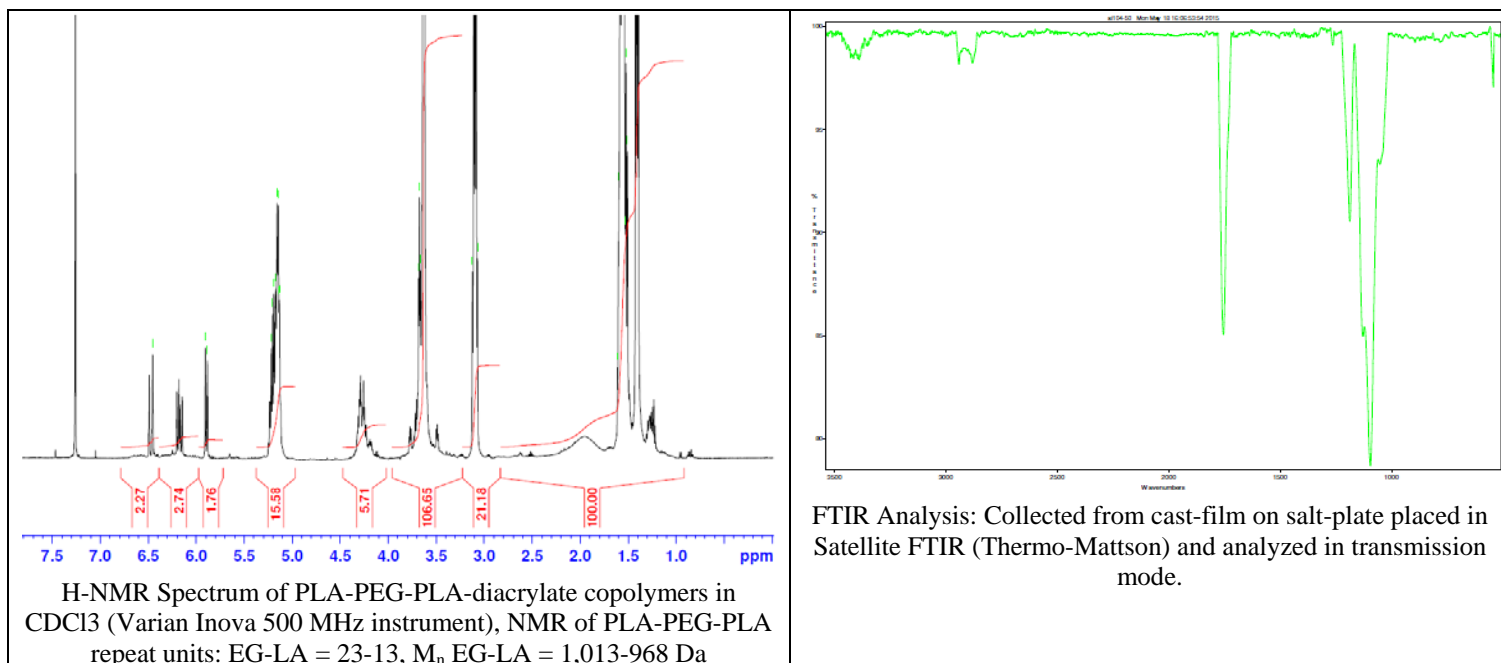
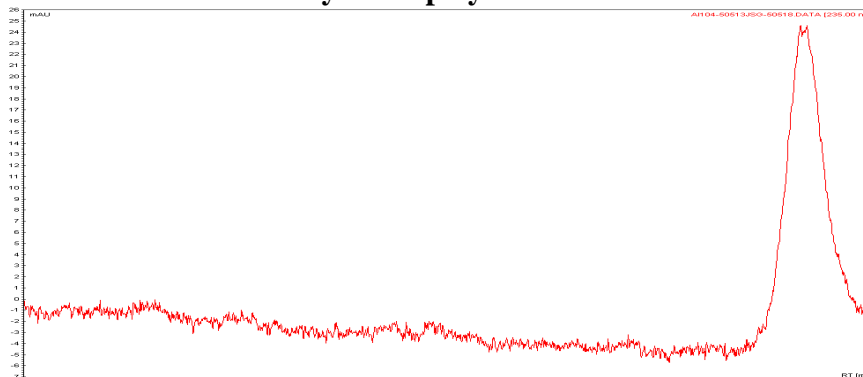


# No. AI104 Certificate of Analysis

Product Name: Poly(DL-lactide)-*b*-Poly(ethylene glycol)-*b*-Poly(DL-lactide)-diacrylate triblock copolymers (432:1,000:432) (Lot#: 50513JSG) (REV:A NMR Data)



- GPC analysis of PLA-PEG-PLA-diacrylate copolymers**

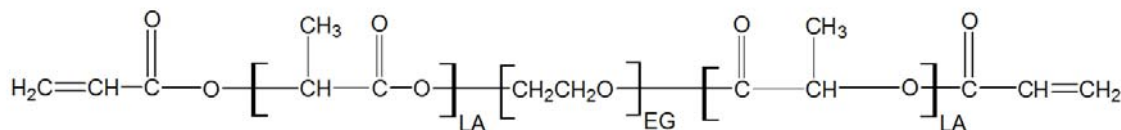


Analysis Method: Varian Prostar system with 1 ml/min DCM flow across two Phenogel 5 μm columns and one Resipore column (Agilent). Detection via UV/Vis, calibrated against polystyrene standards (\*PEG standards).

Polymer	M <sub>n</sub> (from GPC)	M <sub>w</sub> (from GPC)	PDI
PLA-PEG-PLA-diacrylate	2583	2926	1.13
PEG1000 Initiator*	1011	1020	1.01

\*-Run separately, chromatograph not shown.

- Structure of PLA-PEG-PLA-diacrylate copolymers**



Material provided for research use only. Not for human use.

PolySciTech Division of Akina, Inc. | 3495 Kent Avenue, West Lafayette, IN 47906

765-464-0390 | www.polysciotech.com

For research use only.