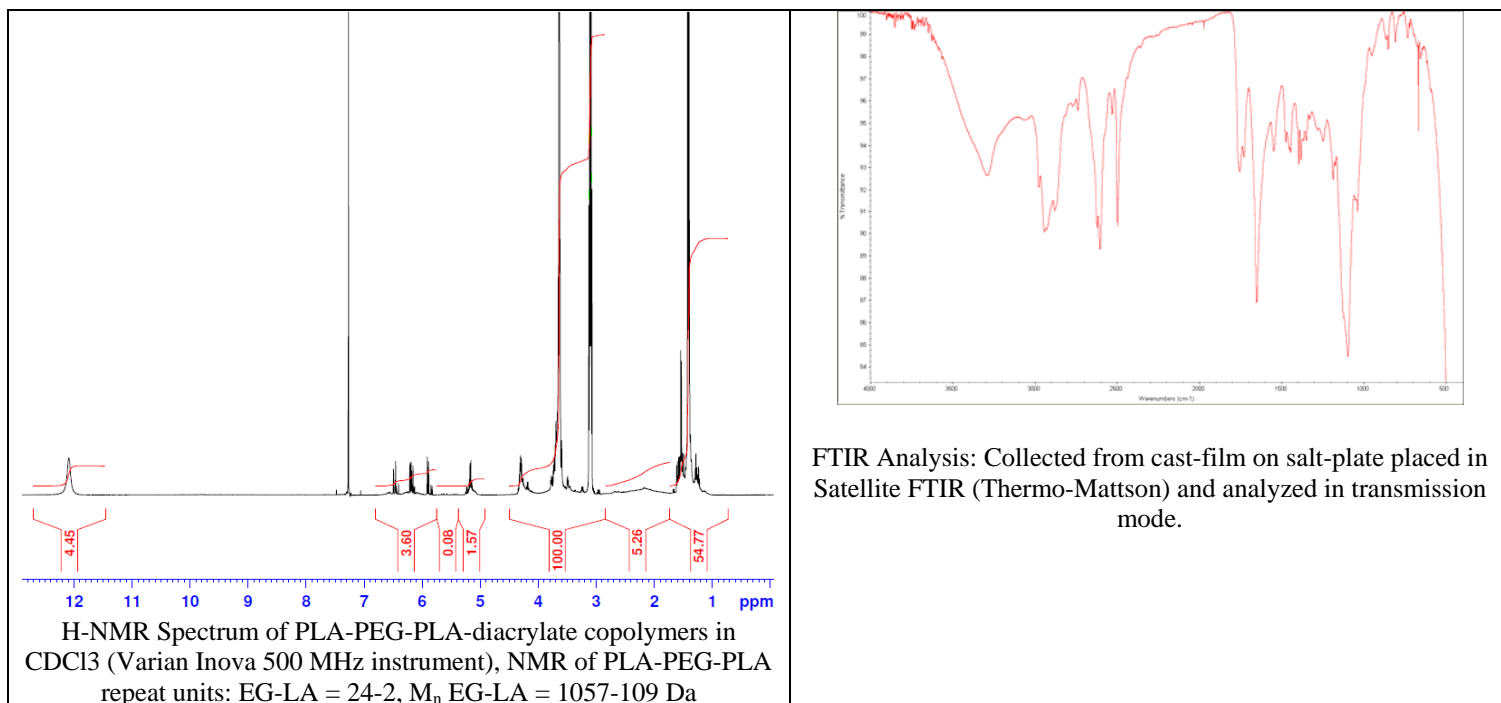
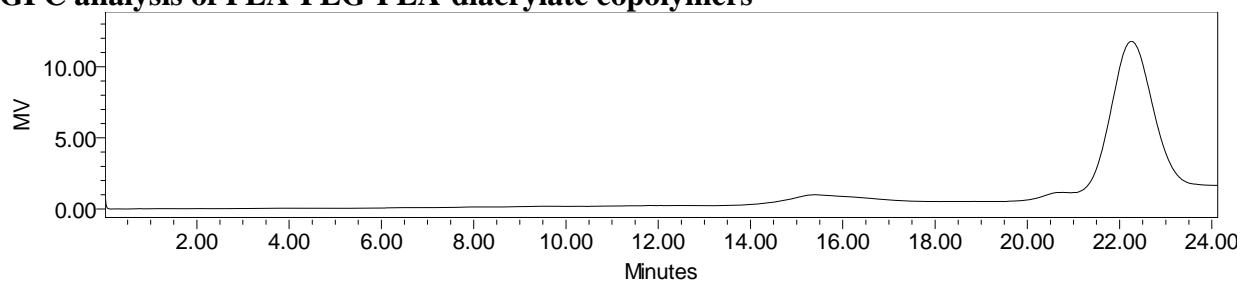


No. AI102 Certificate of Analysis

Product Name: Poly(DL-lactide)-*b*-Poly(ethylene glycol)-*b*-Poly(DL-lactide)-diacrylate triblock copolymers (72:1,000:72) (Lot#: 70301JSG-A)



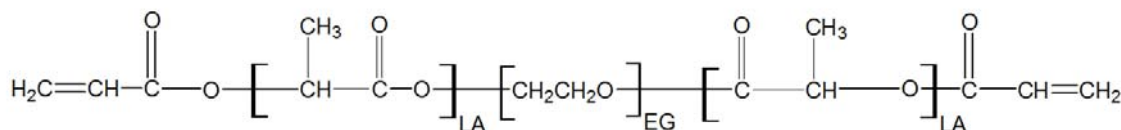
• GPC analysis of PLA-PEG-PLA-diacrylate copolymers



Polymer	Mn (from GPC)	Mw (from GPC)	PDI
PLA-PEG-PLA-diacrylate	1,649	1,768	1.07
PEG1000 Initiator*	1,118	1,142	1.02

*-Run separately against PEG standards, chromatograph not shown.

• Structure of PLA-PEG-PLA-diacrylate copolymers



Material provided for research use only. Not for human use.

PolySciTech Division of Akina, Inc. | 3495 Kent Avenue, West Lafayette, IN 47906

765-464-0390 | www.polysciotech.com

For research use only.