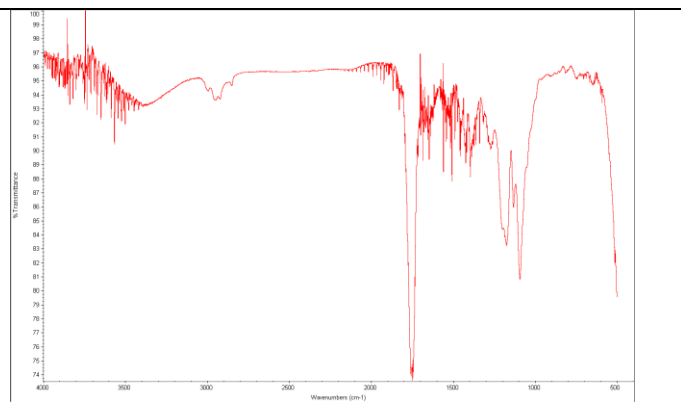
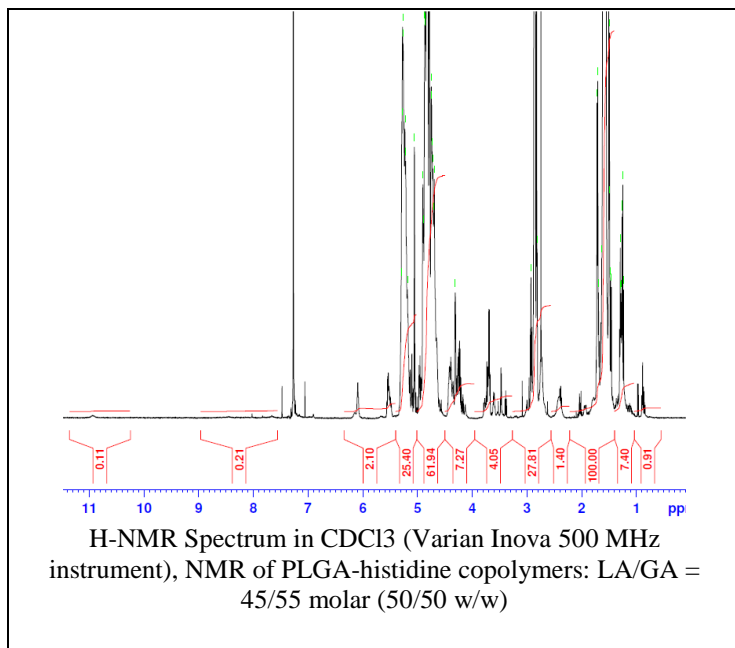


No. AI098

Certificate of Analysis

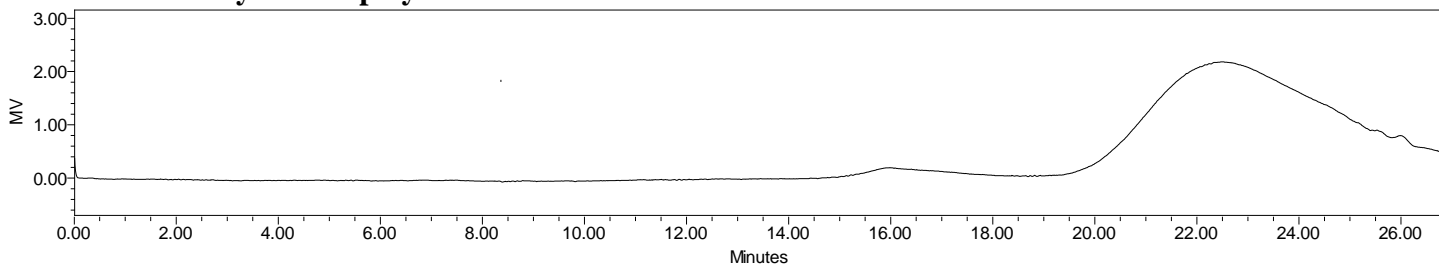


Product Name: Poly(lactide-co-glycolide)-histidine methyl ester endcap (Mn 1,000-5,000
LA:GA 50:50) (Lot#: 170505FAJ-A)



FTIR Analysis: Collected from cast-film on salt-plate placed in Protégé 460 Spectrometer (Nicolet) and analyzed in transmission E.S.P. mode.

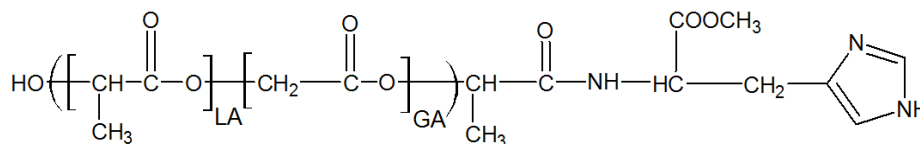
• GPC analysis of copolymers



GPC Analysis Method: Waters Breeze-2 system with 1 ml/min THF flow across three GPC columns (Phenomenex). Detection via refractive index, calibrated against polystyrene standards.

Polymer	M _n (from GPC)	M _w (from GPC)	PDI
PLGA-histidine	1615	2132	1.32

• Structure of PLGA-histidine copolymers



Material provided for research use only. Not for human use.

PolySciTech Division of Akina, Inc. | 3495 Kent Avenue, West Lafayette, IN 47906
765-464-0390 | www.polysciotech.com

For research use only.