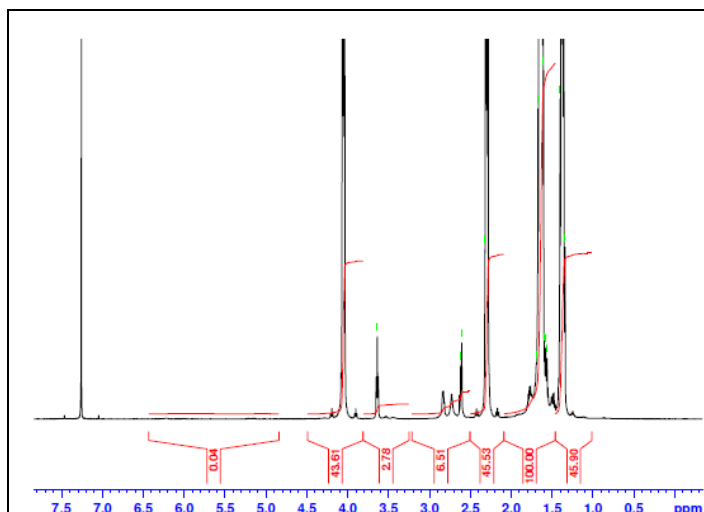
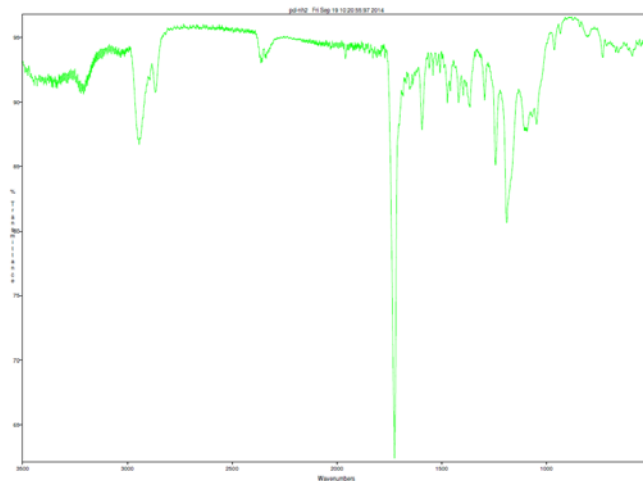
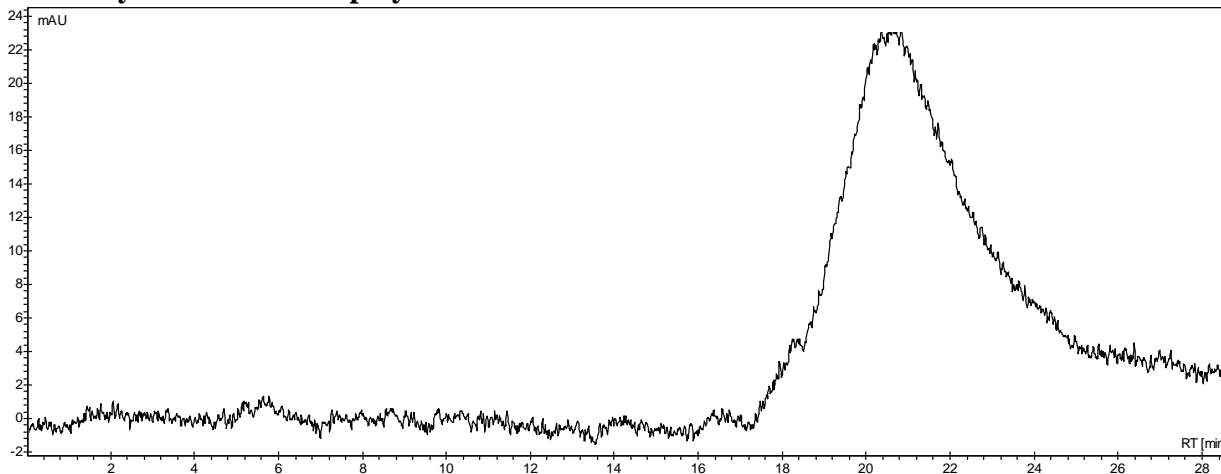


Product Name: Poly(caprolactone) amine endcap (Mn 1000-5000 Da) (Lot #: 40916JSG)


 H-NMR Spectrum of PCL-NH₂ copolymers in CDCl₃ (Varian Inova 500 MHz instrument)


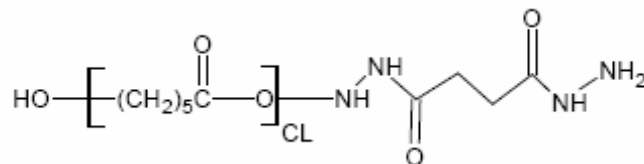
FTIR Analysis: Collected from cast-film on salt-plate placed in Satellite FTIR (Thermo-Mattson) and analyzed in transmission mode.

- **GPC analysis of PCL-NH₂ polymer**


 Analysis Method: Varian Prostar system with 1 ml/min DCM flow across two Phenogel 5 μ m columns and one Resipore column (Agilent). Detection via UV/Vis, calibrated against polystyrene standards.

Polymer	Mn (from GPC)	Mw (from GPC)	PDI
PCL-NH ₂	4,767	10,823	2.27

- **Structure of PCL-NH₂ copolymers**



Material provided for research use only. Not for human use.

 PolySciTech Division of Akina, Inc. | 3495 Kent Avenue, West Lafayette, IN 47906
 765-464-0390 | www.polysciotech.com

For research use only.