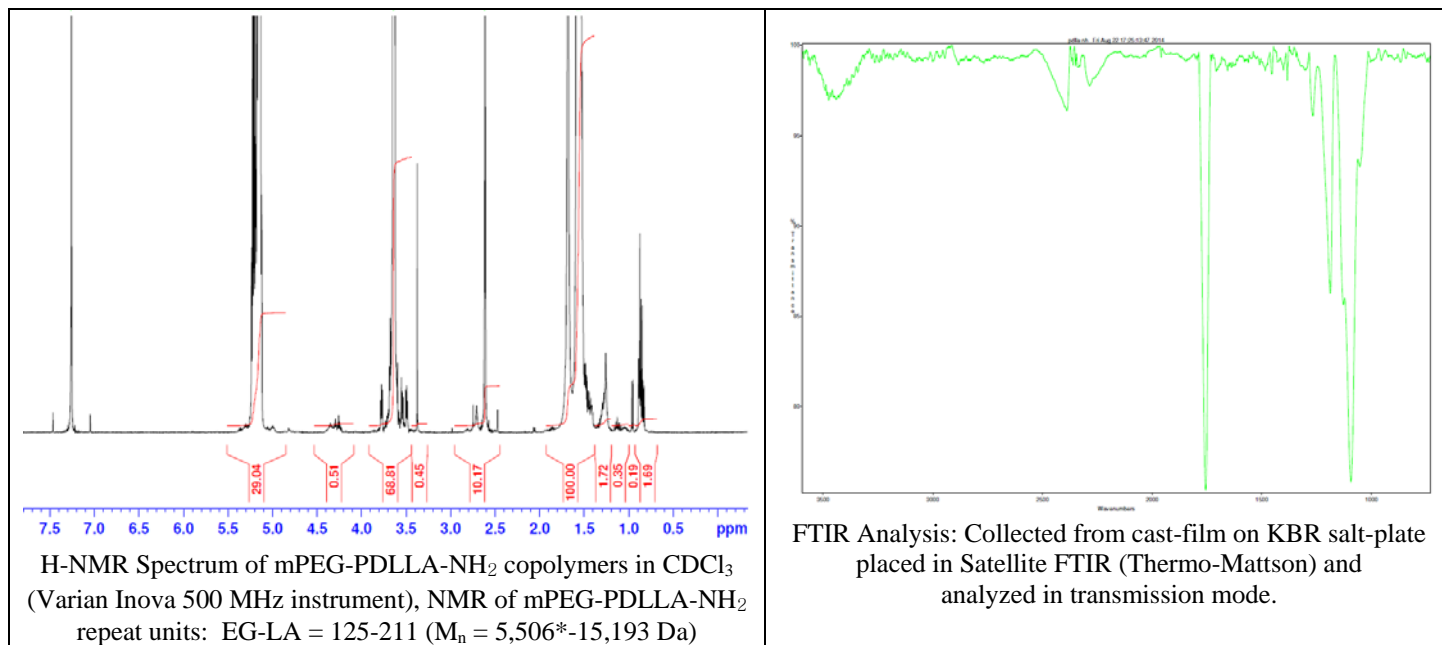


# No. AI086

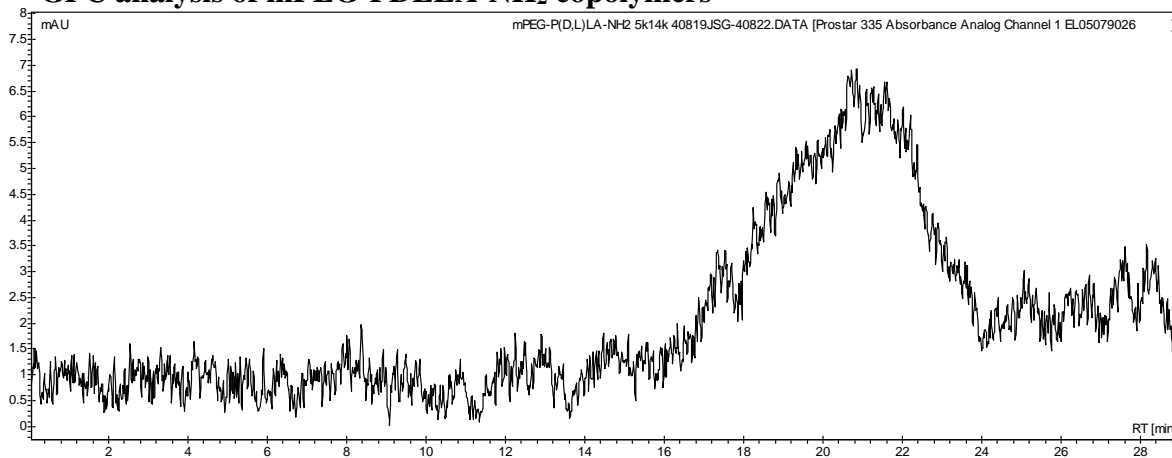
# Certificate of Analysis



Product Name: Methoxy Poly(ethylene glycol)-*b*-Poly(D,L-lactic acid)-Amine copolymers ( $M_w \sim 5,000:14,000$  Da) (Lot#: 40819JSG) (REV:A)



## • GPC analysis of mPEG-PDLLA-NH<sub>2</sub> copolymers

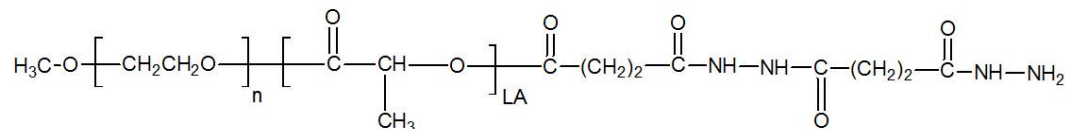


Analysis Method: Varian Prostar system with 1 ml/min DCM flow across across two Phenogel 5 $\mu$ m columns and one Resipore column (Agilent). Detection via UV/Vis, calibrated against polystyrene standards.

Polymer	$M_n$ (from GPC)	$M_w$ (from GPC)	PDI
mPEG-PDLLA-NH <sub>2</sub>	11,619	21,133	1.82
mPEG precursor*	5,488	5,847	1.07

\*-run separately, data not shown

## • Structure of mPEG-P(DL)LA-NH<sub>2</sub> copolymers



Material provided for research use only. Not for human use.

PolySciTech Division of Akina, Inc. | 3495 Kent Avenue, West Lafayette, IN 47906

765-464-0390 | www.polysciotech.com

For research use only.