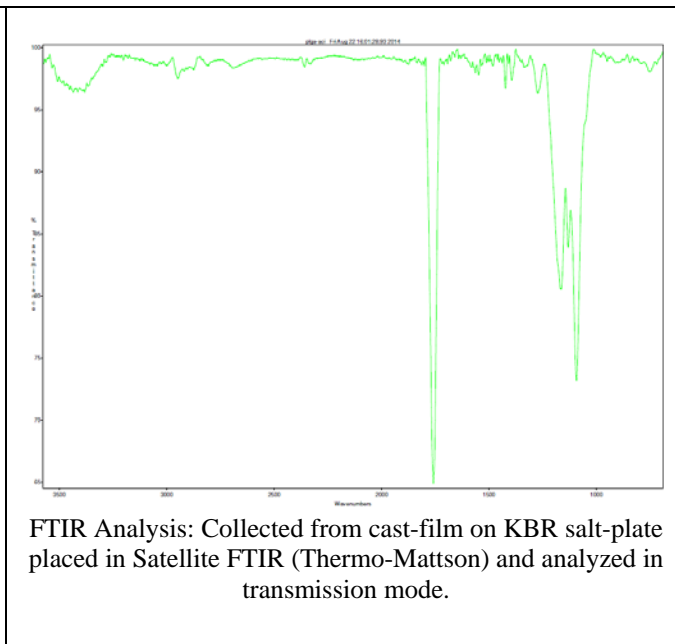
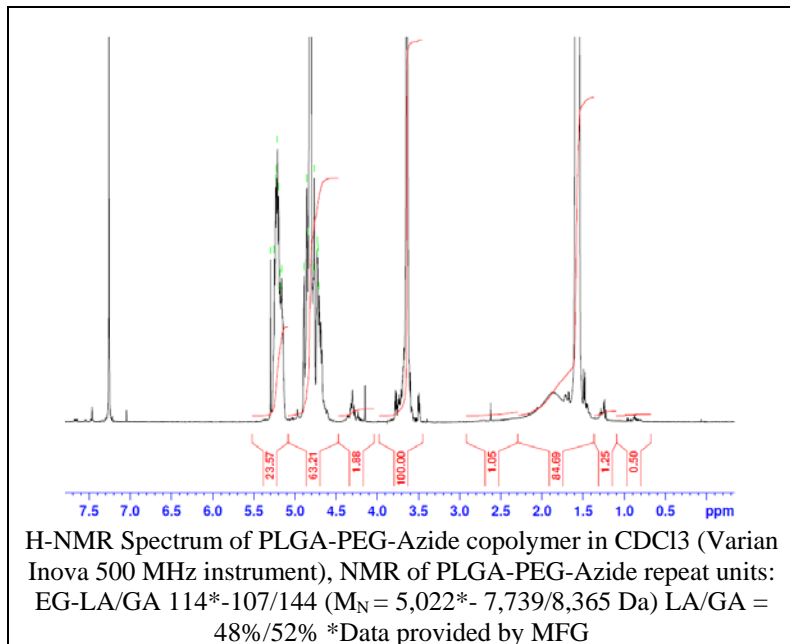


No. AI85

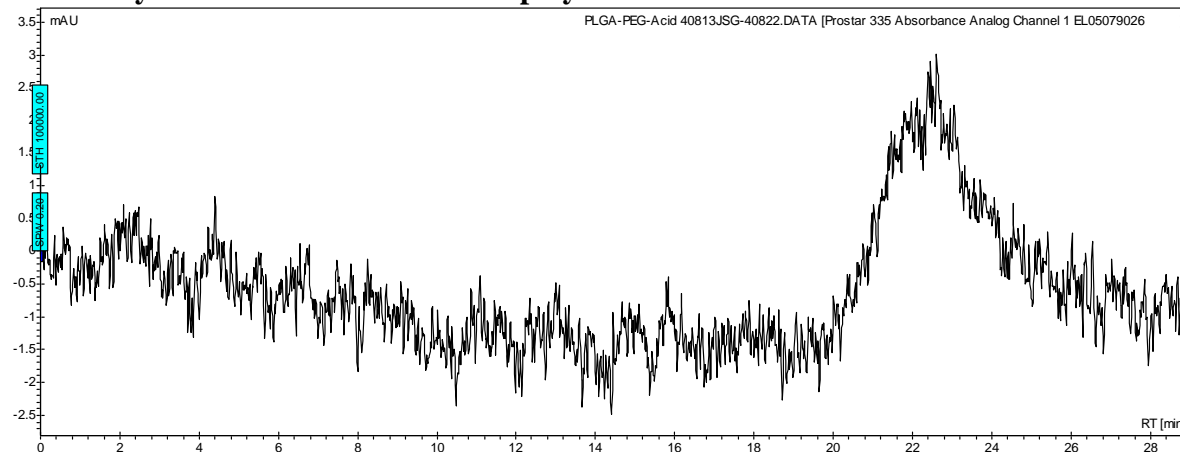
Certificate of Analysis



Product Name: Poly(lactide-co-glycolide)-b-Poly(ethylene glycol)-Azide copolymer ($M_w \sim 15,000:5,000$ Da) (Lot #40813JSG) REV:A Structure



• GPC analysis of PLGA-PEG-Azide copolymers

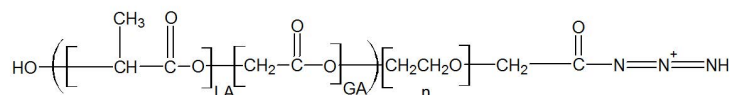


Analysis Method: Varian Prostar system with 1 ml/min DCM flow across two Phenogel 5 μ m columns and one PLgel Resipore column (Agilent). Detection via UV/Vis, calibrated against polystyrene standards.

Polymer	Mn (from GPC)	Mw (from GPC)	PDI
PLGA-PEG-Azide	8200	17030	2.08
PEG-Precursor	Average M_n by GFC – 5000 Da*		

*Data provided by MFG

• Structure of PLGA-PEG-Azide copolymers



Material provided for research use only. Not for human use.

PolySciTech Division of Akina, Inc. | 3495 Kent Avenue, West Lafayette, IN 47906

765-464-0390 | www.polysciotech.com

For research use only.