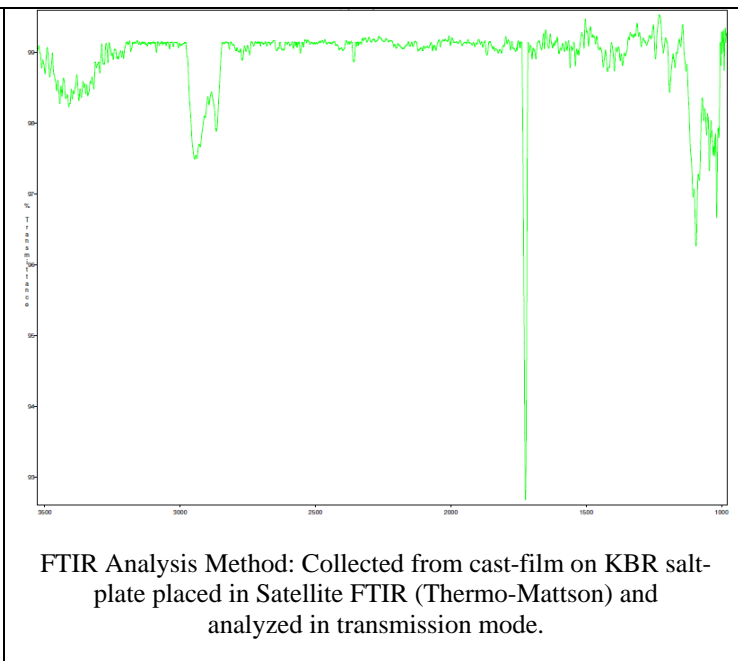
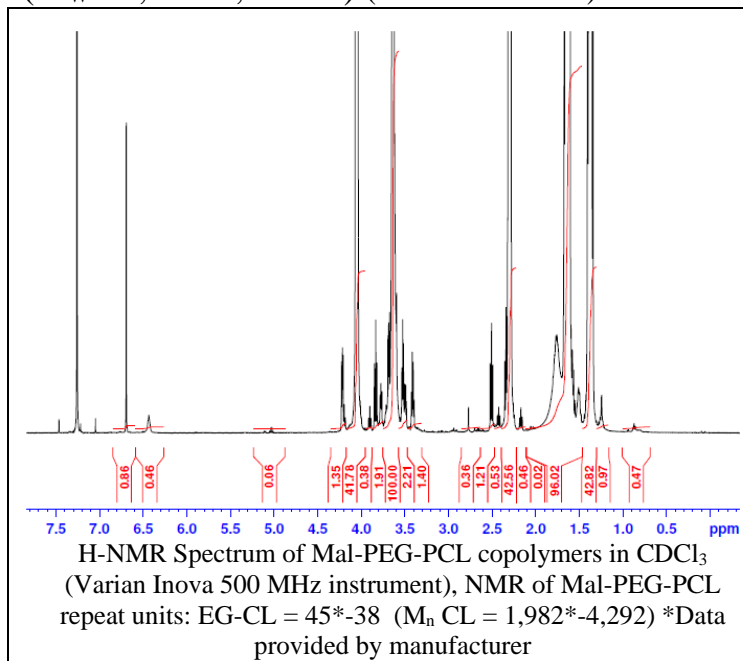


No. AI82

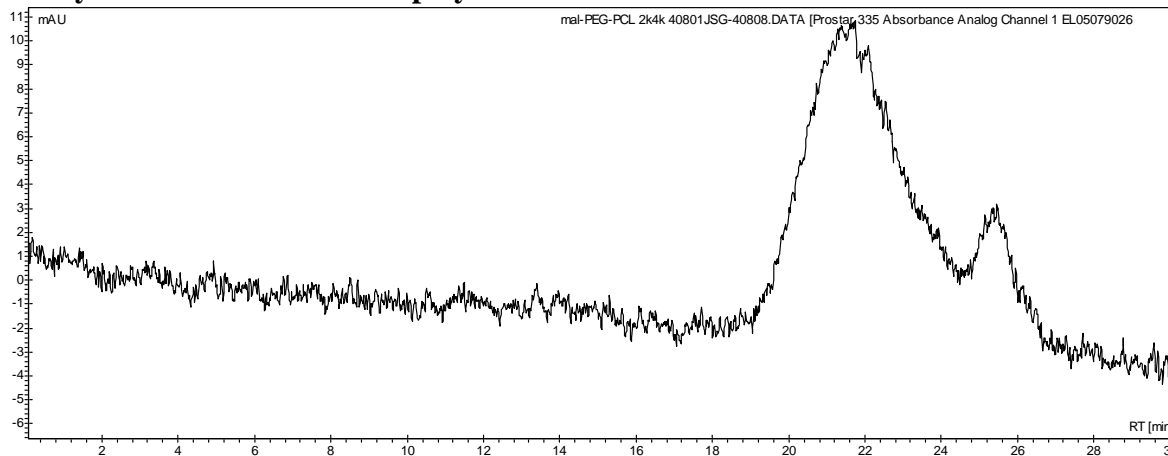
Certificate of Analysis



Product Name: Maleimide-*b*-Poly(ethylene glycol)-Poly(caprolactone) copolymers
($M_w \sim 2,000-4,000\text{Da}$) (Lot#: 40801JSG)



• GPC analysis of Mal-PEG-PCL copolymers

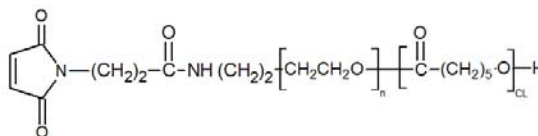


Analysis Method: Varian Prostar system with 1 ml/min DCM flow across two Phenogel 5 μ m columns and one Resipore column (Agilent). Detection via UV/Vis, calibrated against polystyrene standards.

Polymer	M_n (from GPC)	M_w (from GPC)	PDI
Mal-PEG-PCL	3,852	10,634	2.76
PEG Precursor	M_n by GFC 2000*		

*-data provided by manufacturer

• Structure of Mal-PEG-PCL copolymers



Material provided for research use only. Not for human use.

PolySciTech Division of Akina, Inc. | 3495 Kent Avenue, West Lafayette, IN 47906

765-464-0390 | www.polysciotech.com

For research use only.