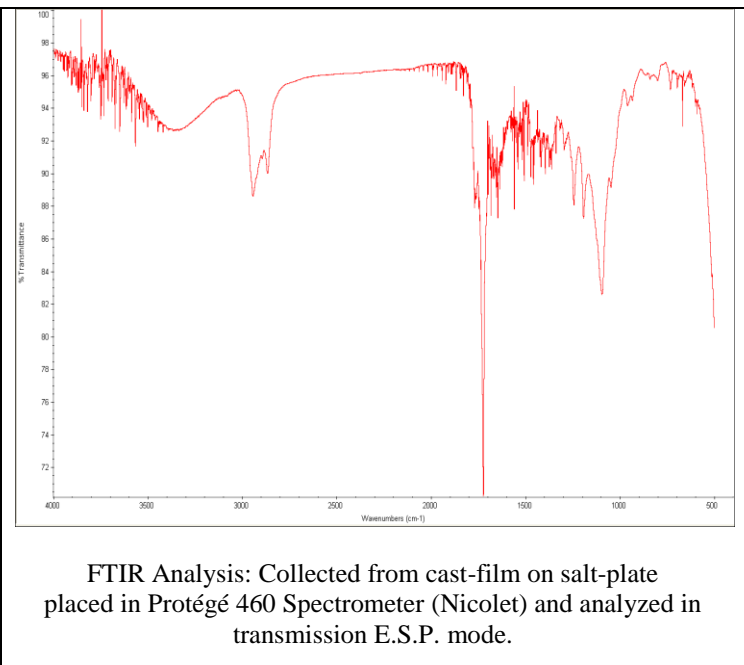
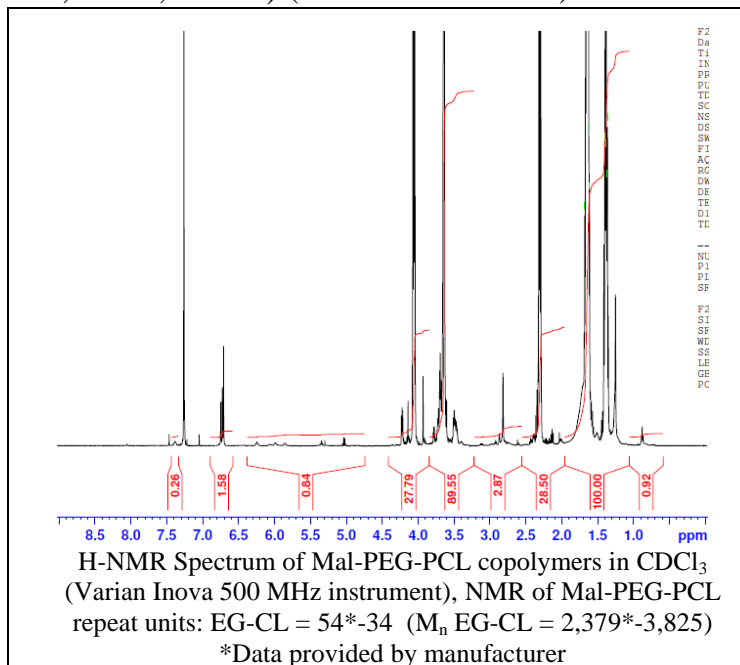


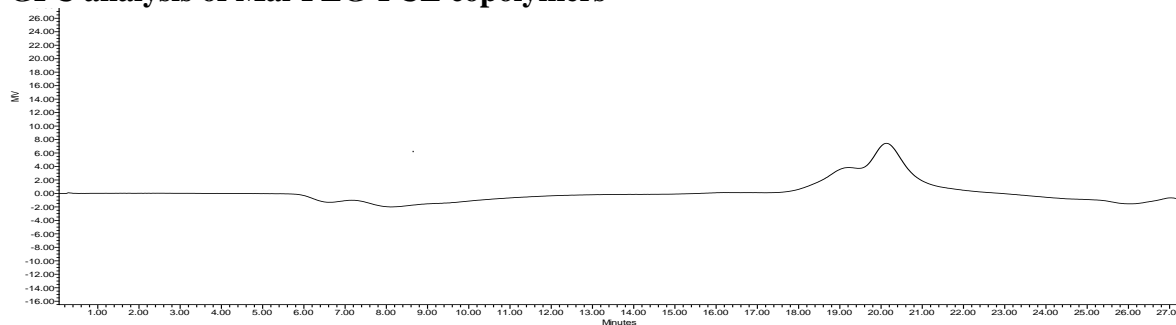
No. AI082

Certificate of Analysis

Product Name: Maleimide-*b*-Poly(ethylene glycol)-Poly(caprolactone) copolymers (M_w ~2,000-4,000Da) (Lot#: 170525JSG-A)



• GPC analysis of Mal-PEG-PCL copolymers

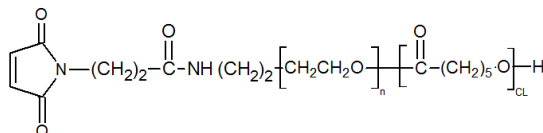


GPC Analysis Method: Breeze 2 system with 1 ml/min THF flow across three GPC columns (Phenomenex). Detection via refractive index, calibrated against polystyrene standards.

Polymer	M_n (from GPC)	M_w (from GPC)	PDI
Mal-PEG-PCL	7,465	8,972	1.20
PEG Precursor	Average M_n by GPC- 2400*		

*-data provided by manufacturer

• Structure of Mal-PEG-PCL copolymers



Material provided for research use only. Not for human use.