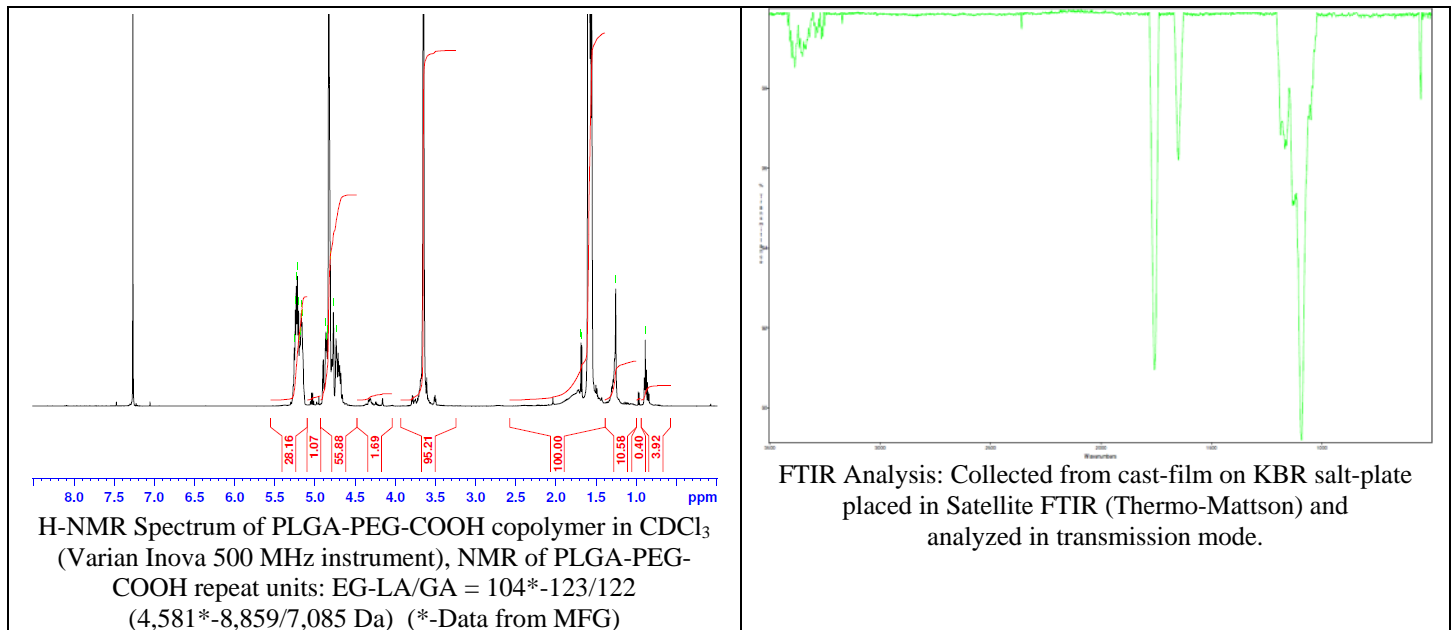
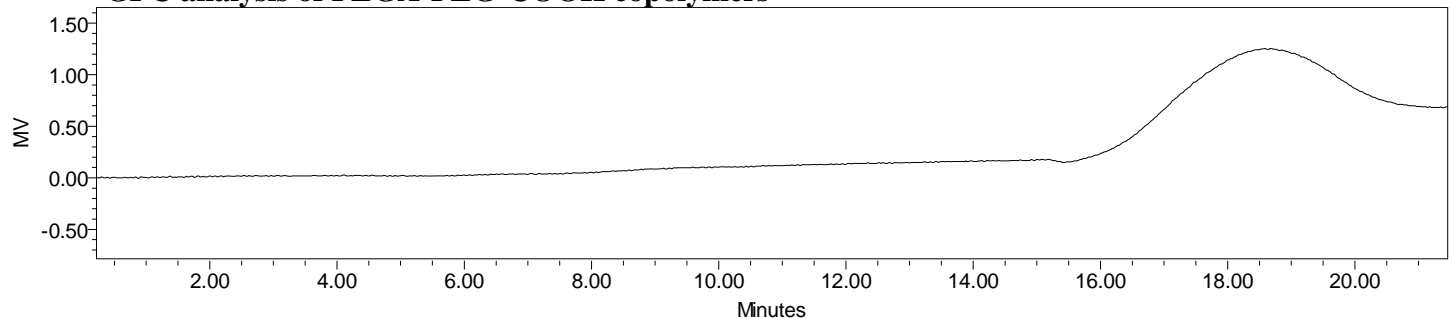


# No. AI078 Certificate of Analysis

Product Name: Poly(lactide-co-glycolide)-*b*-Poly(ethylene glycol)-carboxylic acid endcap  
 (M<sub>w</sub> ~20,000-5,000 Da, 50:50 LA:GA) (Lot#: 60526DWW-A)



- GPC analysis of PLGA-PEG-COOH copolymers**

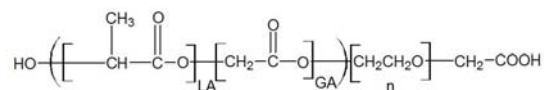


Analysis Method: Waters Breeze 2 system with 1 ml/min DCM flow across two Phenogel 5μm columns and one PLgel Resipore column (Agilent). Detection via refractive index, calibrated against polystyrene standards.

| Polymer       | M <sub>n</sub> (from GPC)                 | M <sub>w</sub> (from GPC) | PDI  |
|---------------|---|---------------------------|------|
| PLGA-PEG-COOH | 25,996                                    | 38,768                    | 1.49 |
| HO-PEG-COOH*  | Average M <sub>n</sub> by GFC – 4,600 Da* |                           |      |

\*-data provided by MFG

- Structure of PLGA-PEG-COOH copolymers**



Material provided for research use only. Not for human use.