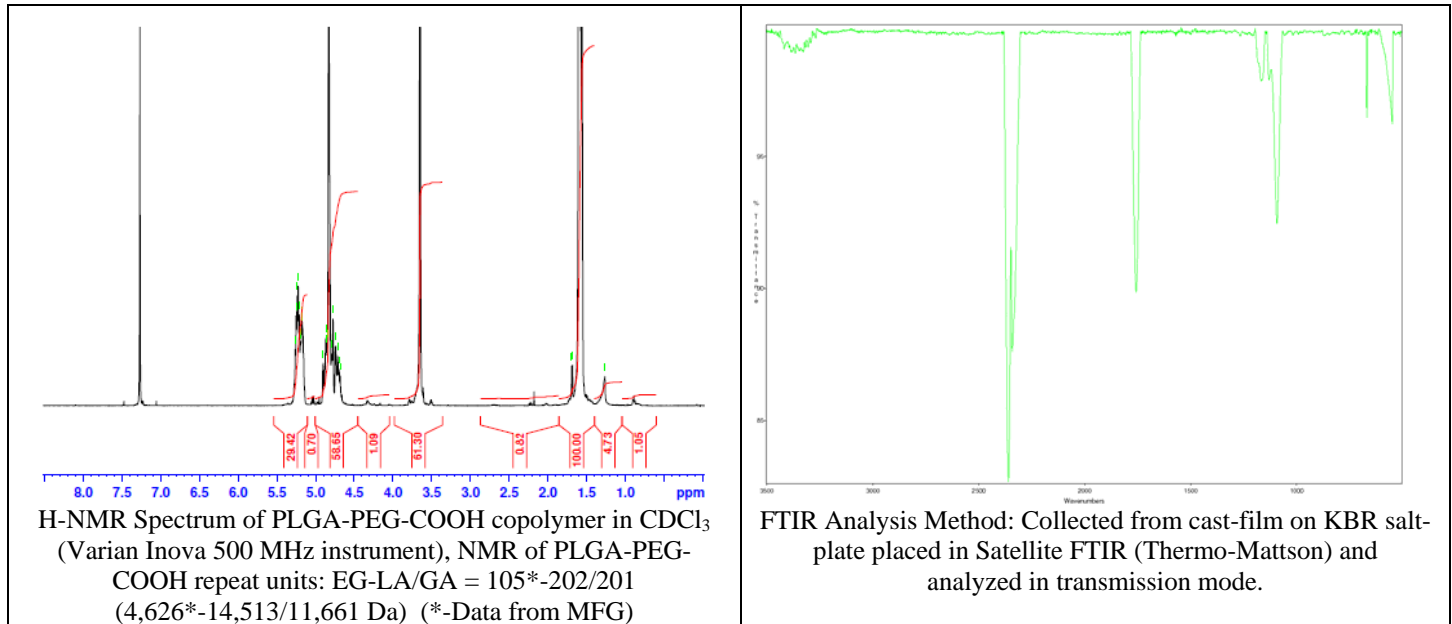
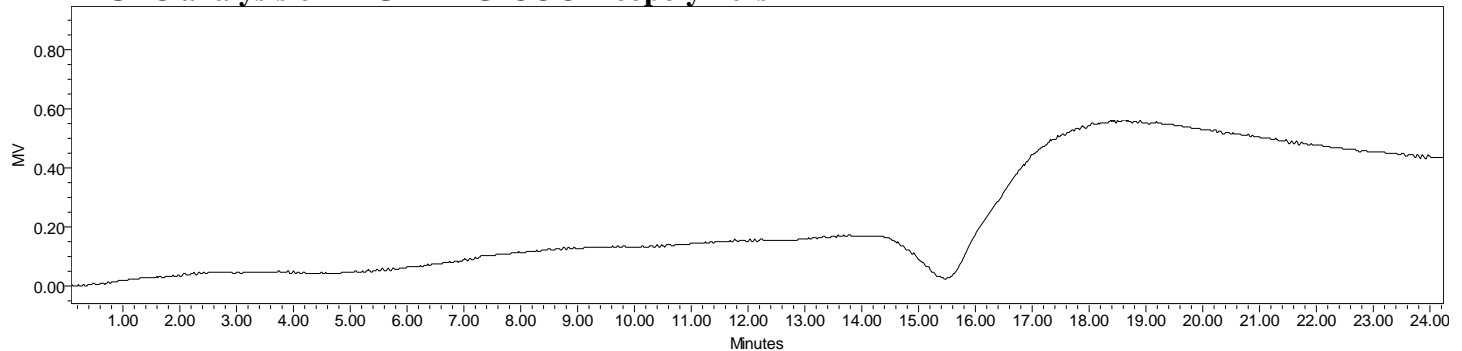


# No. AI078 Certificate of Analysis

Product Name: Poly(lactide-co-glycolide)-*b*-Poly(ethylene glycol)-carboxylic acid endcap  
 (M<sub>w</sub> ~20,000-5,000 Da, 50:50 LA:GA) (Lot#: 60217FAJ-B)



- GPC analysis of PLGA-PEG-COOH copolymers**

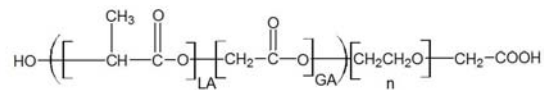


Analysis Method: Waters Breeze 2 system with 1 ml/min DCM flow across two Phenogel 5µm columns and one PLgel Resipore column (Agilent). Detection via refractive index, calibrated against polystyrene standards.

Polymer	M <sub>n</sub> (from GPC)	M <sub>w</sub> (from GPC)	PDI
PLGA-PEG-COOH	9,389	27,772	2.96
HO-PEG-COOH*	Average M <sub>n</sub> by GFC – 4,600 Da*		

\*-data provided by MFG

- Structure of PLGA-PEG-COOH copolymers**



Material provided for research use only. Not for human use.

PolySciTech Division of Akina, Inc. | 3495 Kent Avenue, West Lafayette, IN 47906  
 765-464-0390 | www.polysciotech.com

For research use only.