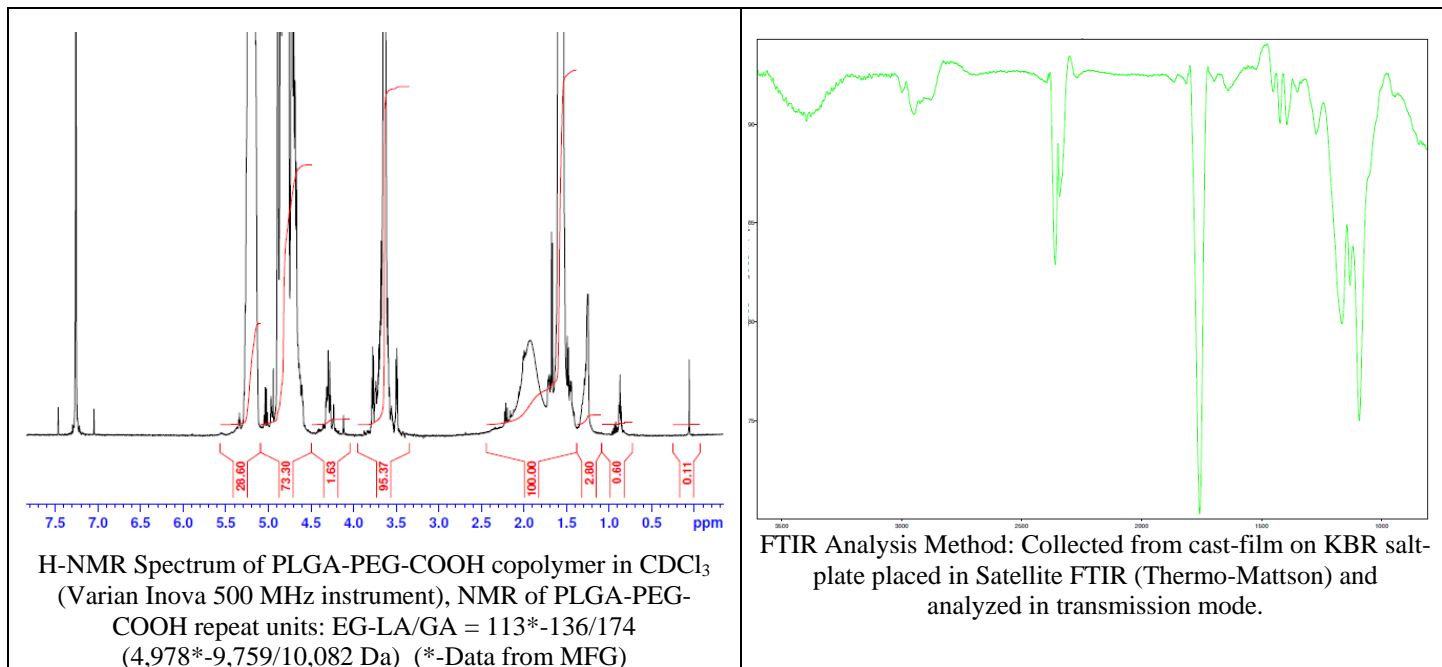


No. AI78

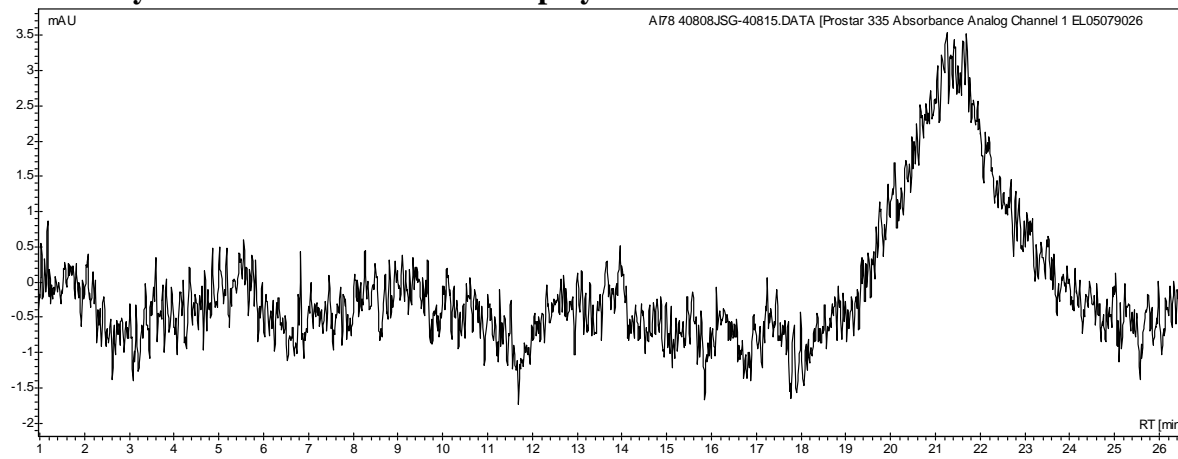
Certificate of Analysis



Product Name: Poly(lactide-co-glycolide)-*b*-Poly(ethylene glycol)-Carboxylic acid endcap
($M_w \sim 20,000$ -5,000 Da, 50:50 LA:GA) (Lot#: 40808JSG)



• GPC analysis of PLGA-PEG-COOH copolymers

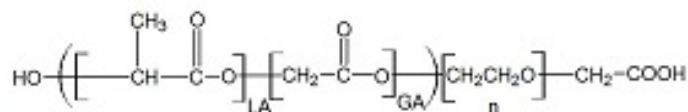


Analysis Method: Varian Prostar system with 1 ml/min DCM flow across two Phenogel 5 μ m columns and one PLgel Resipore column (Agilent). Detection via UV/Vis, calibrated against polystyrene standards.

Polymer	M_n (from GPC)	M_w (from GPC)	PDI
PLGA-PEG-COOH	10,975	22,048	2.01
HO-PEG-COOH*	Average M_n by GFC – 5000 Da*		

*-data provided by MFG

• Structure of PLGA-PEG-COOH copolymers



Material provided for research use only. Not for human use.

PolySciTech Division of Akina, Inc. | 3495 Kent Avenue, West Lafayette, IN 47906

765-464-0390 | www.polysciotech.com

For research use only.