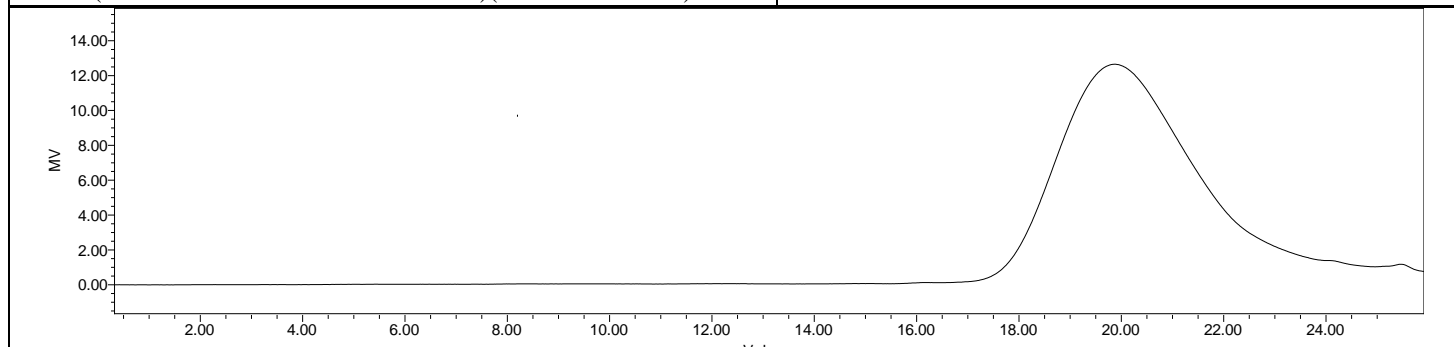
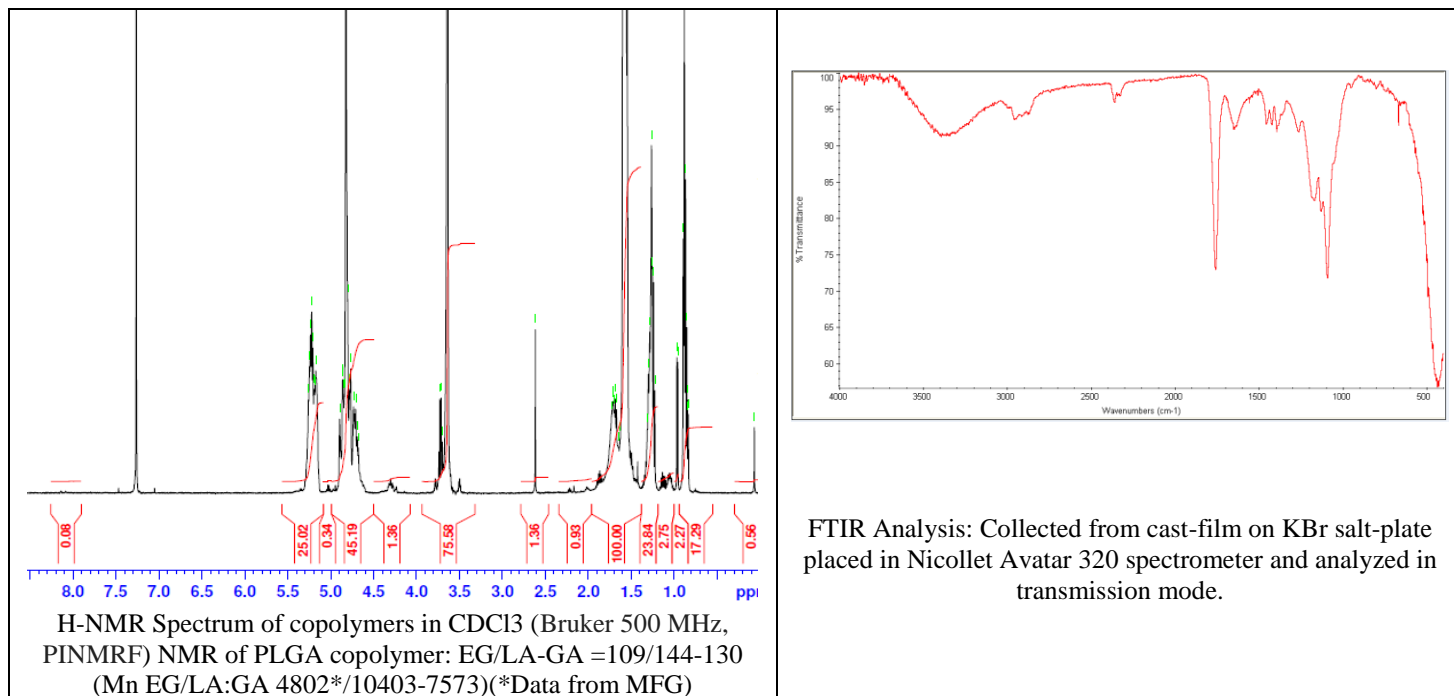


No. AI078

Certificate of Analysis



Product Name: Poly(lactide-co-glycolide)-*b*-Poly(ethylene glycol)-carboxylic acid endcap ($M_w \sim 20,000-5,000$ Da, 50:50 LA:GA) (Lot#: 190723NDR-A)



GPC Analysis Method: Waters Breeze 2 system with 1 ml/min THF flow across three GPC columns. Detection via refractive index, calibrated against polystyrene standards.

Polymer	M_n (from GPC)	M_w (from GPC)	PDI
PLGA-PEG	24,560	33,324	1.36
PEG-Precursors*		4800*	

*- from MFG data

• Structure of PLGA-PEG-COOH copolymers

