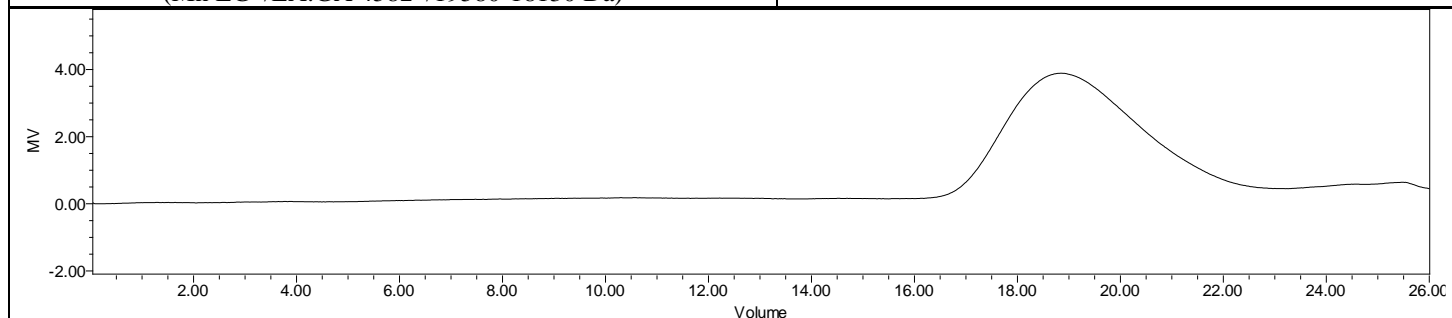
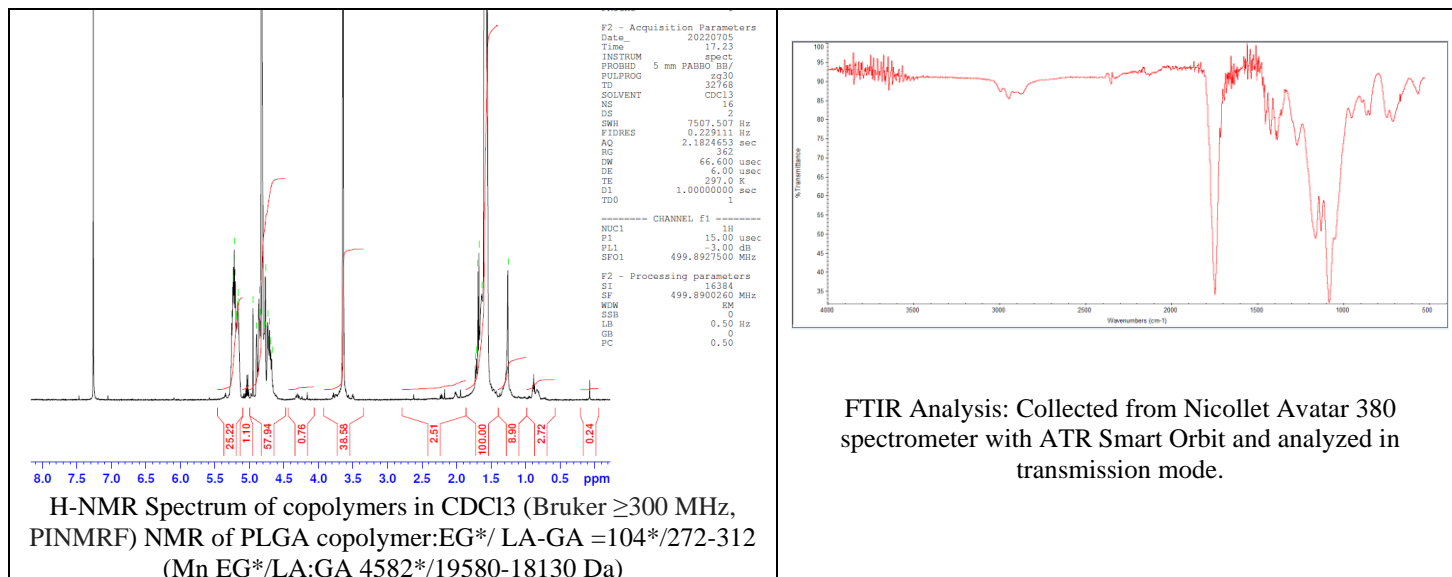


# No. AI076

# Certificate of Analysis



Product Name: Poly(lactide-co-glycolide)-*b*-Poly(ethylene glycol)-carboxylic acid endcap ( $M_w \sim 40,000\text{-}5,000$  Da; 50:50 LA:GA) (Lot#: 220630RAI-A)



GPC-ES Analysis Method: Waters Breeze 2 system with 1 ml/min THF flow across three GPC columns. Detection via refractive index, calibrated against polystyrene standards.

Polymer	$M_n$ (from GPC)	$M_w$ (from GPC)	PDI
PLGA-PEG-COOH	32,163	57,186	1.78
PEG-precursor*	4600*		

\*- from MFG data

## • Structure of PLGA-PEG-COOH copolymers

