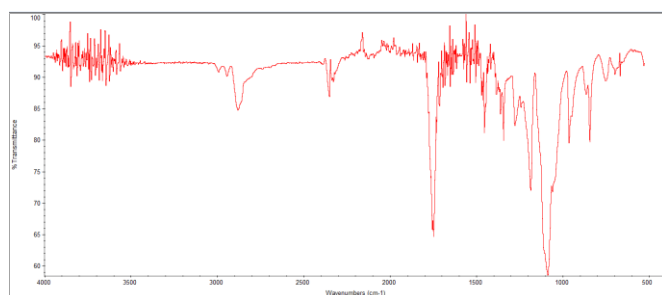
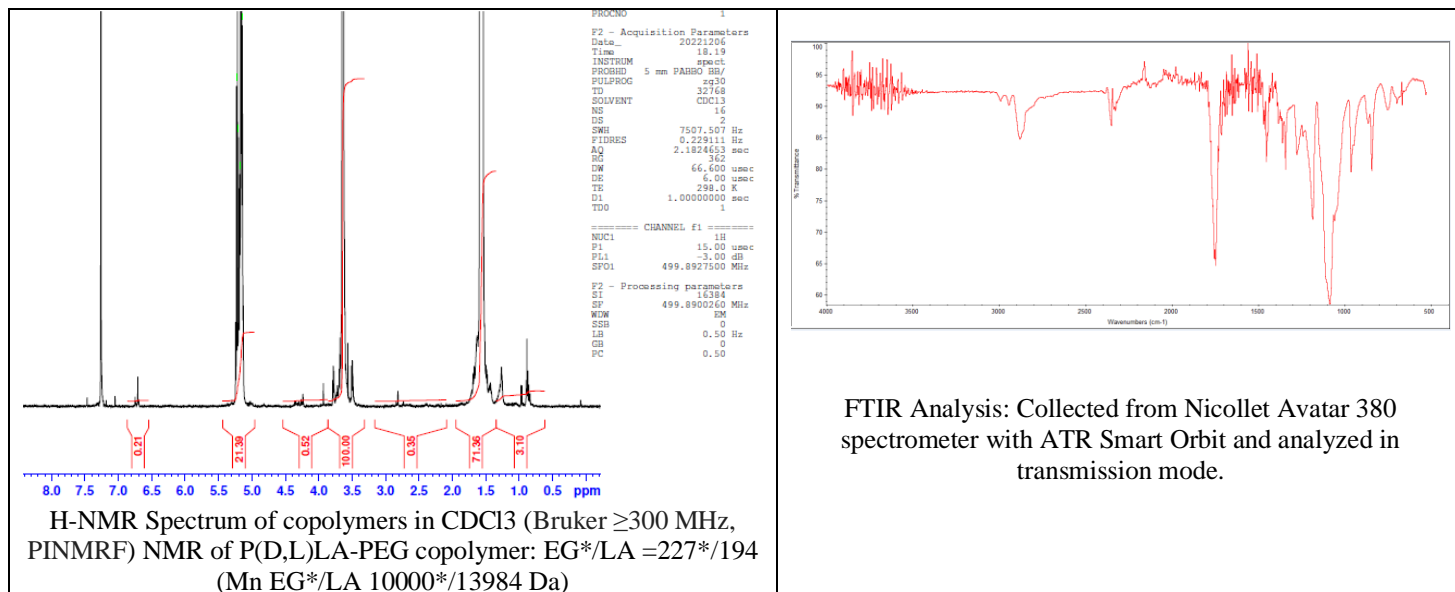


# No. AI066

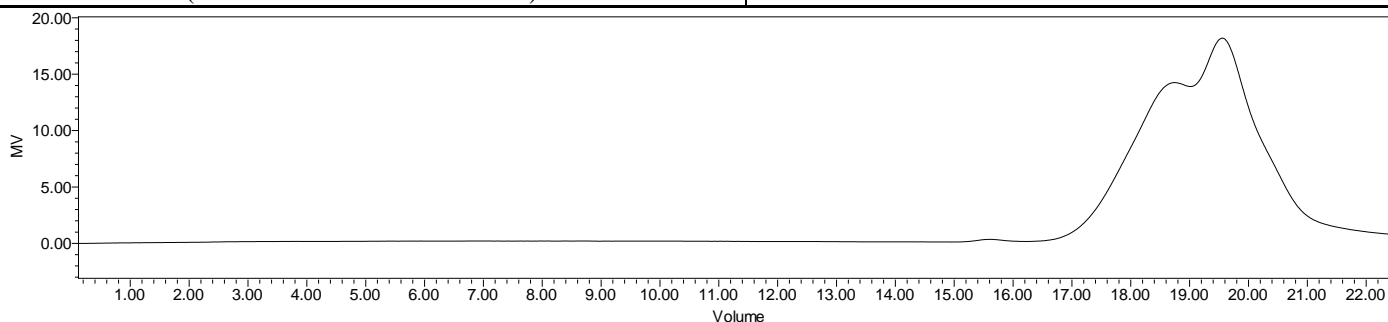
# Certificate of Analysis



Product Name: Poly(D,L-lactide)-b-Poly(ethylene glycol)-Maleimide Copolymers (M<sub>w</sub> 16,000:10,000 Da) (Lot#: 221122RAI-A)



FTIR Analysis: Collected from Nicolet Avator 380 spectrometer with ATR Smart Orbit and analyzed in transmission mode.



GPC-ES Analysis Method: Waters Breeze 2 system with 1 ml/min THF flow across three GPC columns. Detection via refractive index, calibrated against polystyrene standards.

Polymer	M <sub>n</sub> (from GPC)	M <sub>w</sub> (from GPC)	PDI
P(D,L)LA-PEG-Mal	39,513	52,678	1.33
PEG-Precursor*		10,000*	

\*- from MFG data

## • Structure of P(D,L)LA-PEG-Mal copolymers

