

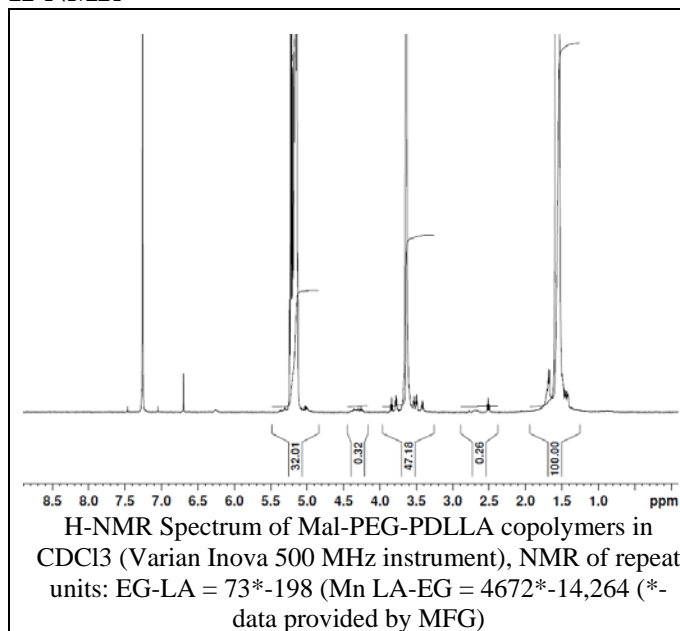
# No. AI065

# Certificate of Analysis

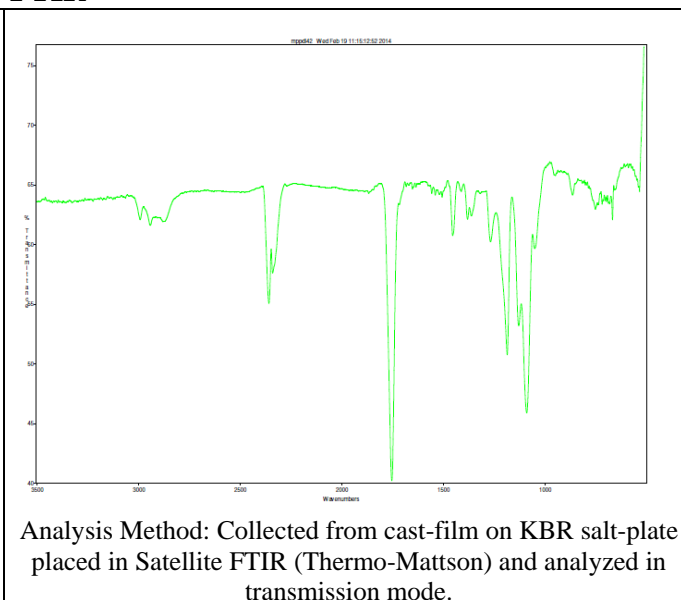


Product Name: Maleimide-Poly(ethylene glycol)-b-Poly(D,L-lactide) (MW 5,000:16,000 Da)  
(Lot#: 40210JSG) (Original)

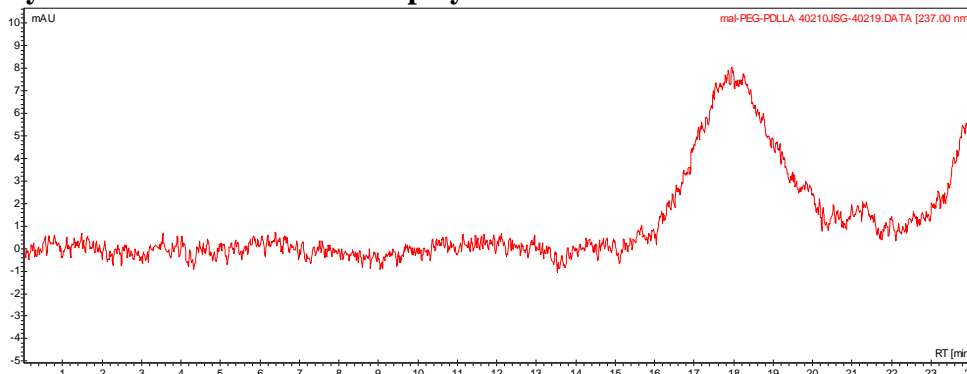
## H-NMR



## FTIR



### • GPC analysis of Mal-PEG-PDLLA copolymers

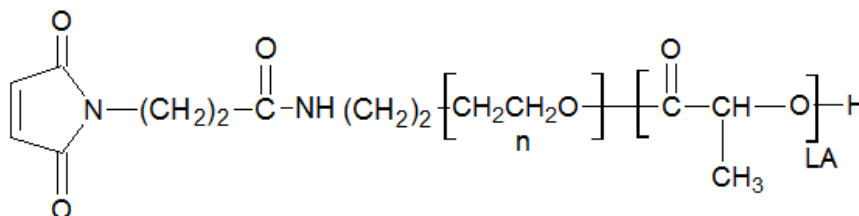


Analysis Method: Varian Prostar system with 1 ml/min DCM flow across two Phenogel 5u columns and one PLgel Resipore column (Agilent). Detection via UV/Vis, calibrated against polystyrene standards

Polymer	Mn (from GPC)	Mw (from GPC)	PDI
Mal-PEG-PDLLA	20,678	34,433	1.67
PEG Precursor	Average Mn (GFC) *4600		

\*-data provided by manufacturer

### • Structure of Mal-PEG-PDLLA copolymers



Material provided for research use only. Not for human use.

PolySciTech Division of Akina, Inc. | 3495 Kent Avenue, West Lafayette, IN 47906

765-464-0390 | www.polysciotech.com

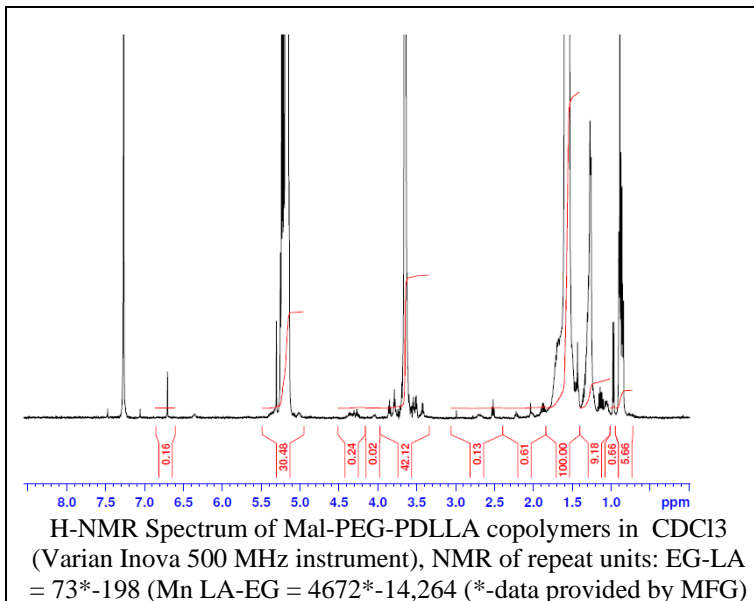
For research use only.

# No. AI065

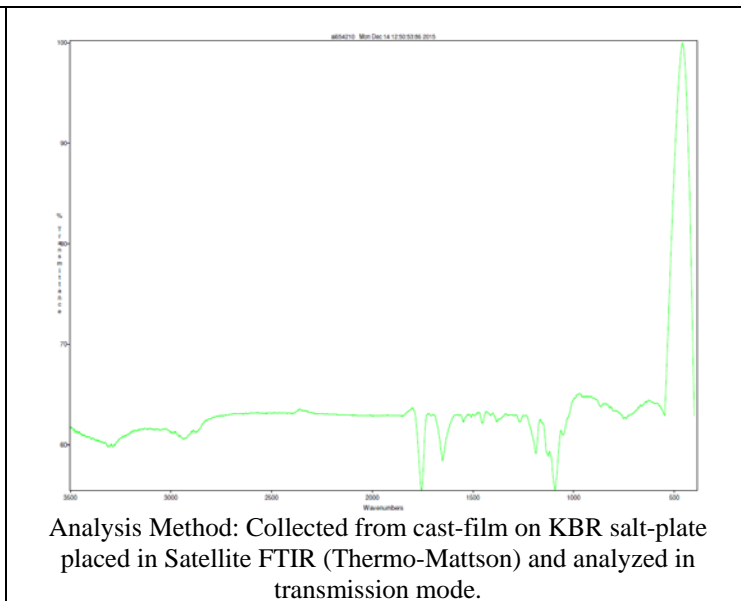
# Certificate of Analysis

Product Name: Maleimide-Poly(ethylene glycol)-b-Poly(D,L-lactide) (MW 5,000:16,000 Da)  
(Lot#: 40210JSG-D) (Repurified)

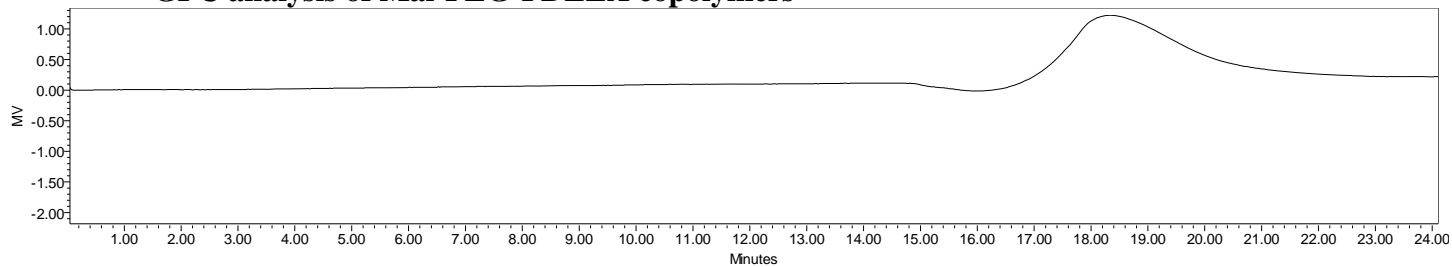
**H-NMR**



**FTIR**



- GPC analysis of Mal-PEG-PDLLA copolymers**

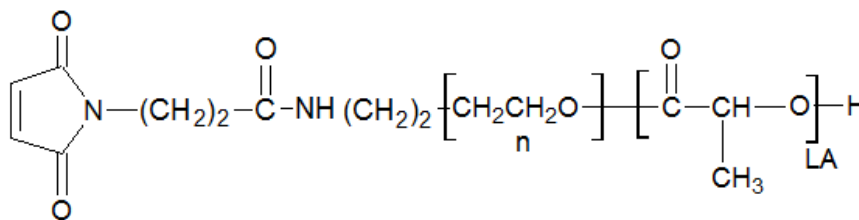


Analysis Method: Waters Breeze 2 system with 1 ml/min DCM flow across three Phenogel 5um columns (Phenomenex). Detection via refractive index, calibrated against polystyrene standards.

Polymer	Mn (from GPC)	Mw (from GPC)	PDI
Mal-PEG-PDLLA	19,190	27,999	1.46
PEG Precursor	Average Mn (GFC) *4600		

\*-data provided by manufacturer

- Structure of Mal-PEG-PDLLA copolymers**



Material provided for research use only. Not for human use.