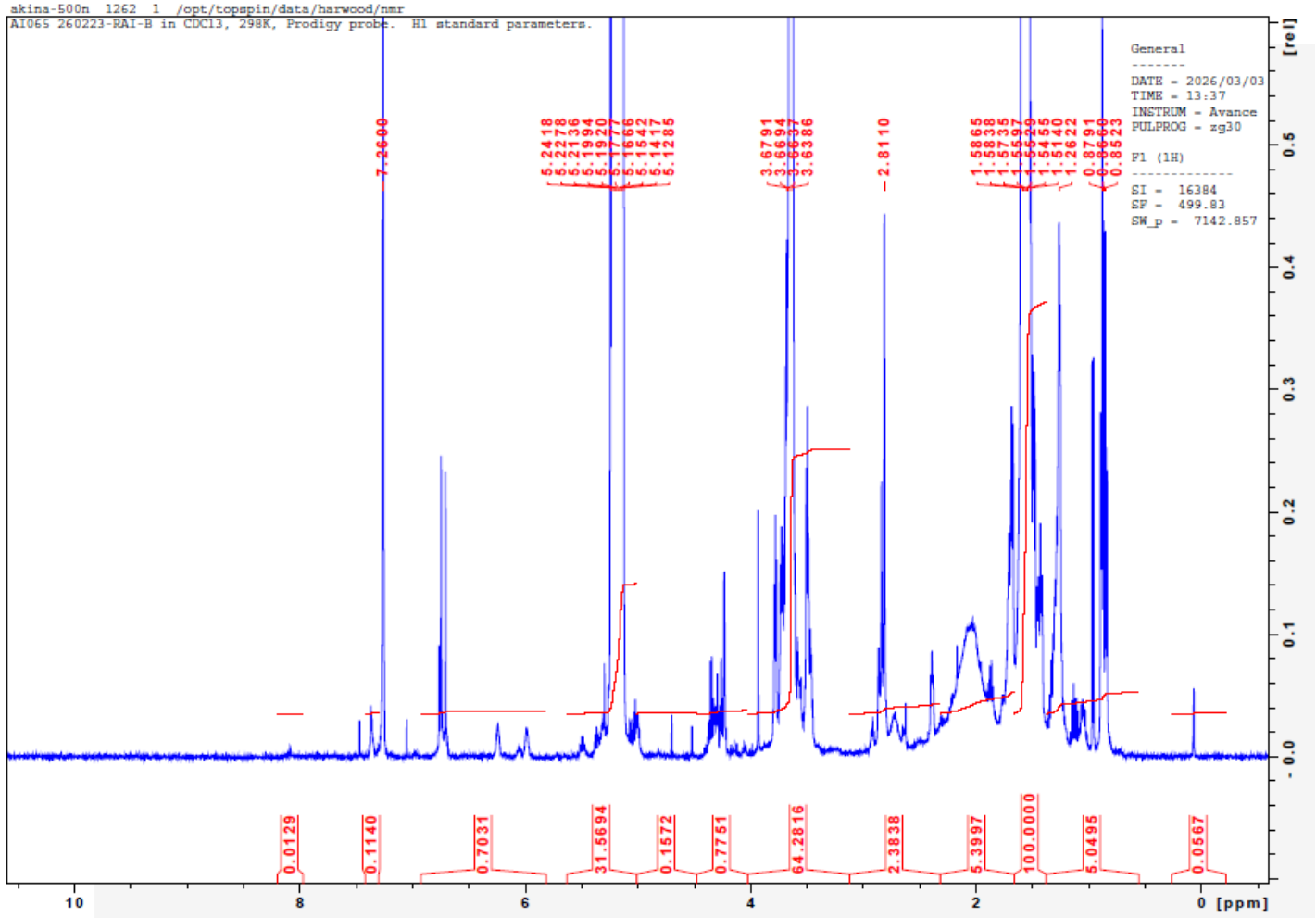


No. AI065

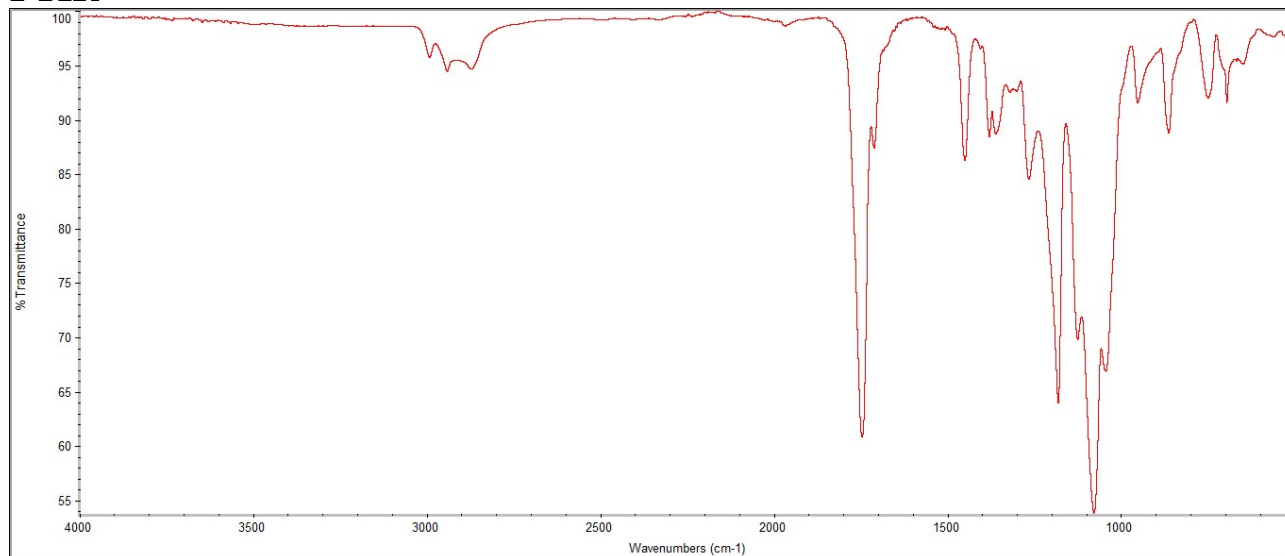
Certificate of Analysis

Product Name: Maleimide-Poly(ethylene glycol)-b-Poly(D,L-lactide) (Mw 5,000:16,000 Da)
 (Lot#: 260223RAI-B)

H-NMR

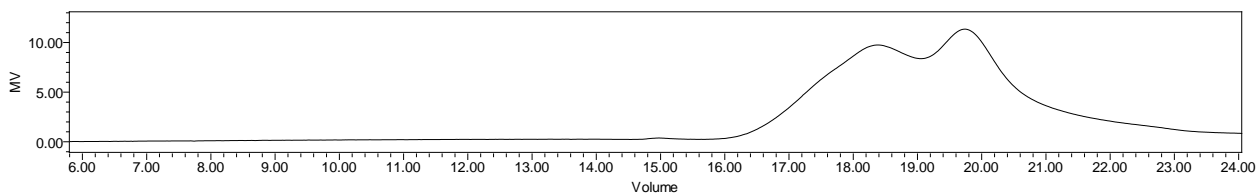


FTIR



FTIR Analysis: Collected from IS5 ID7-ATR spectrometer (Thermo Scientific) and analyzed in transmission mode.

GPC-ES



Polymer	M _n (from GPC)	M _w (from GPC)	PDI
PDLLA-PEG-Mal	25,290	25,676	1.01
PEG-Precursor	M _n =4700*		

GPC-ES Analysis Method: Waters Breeze 2 system with 1 ml/min THF flow across three GPC columns. Detection via refractive index, calibrated against polystyrene standards. *from MFG data

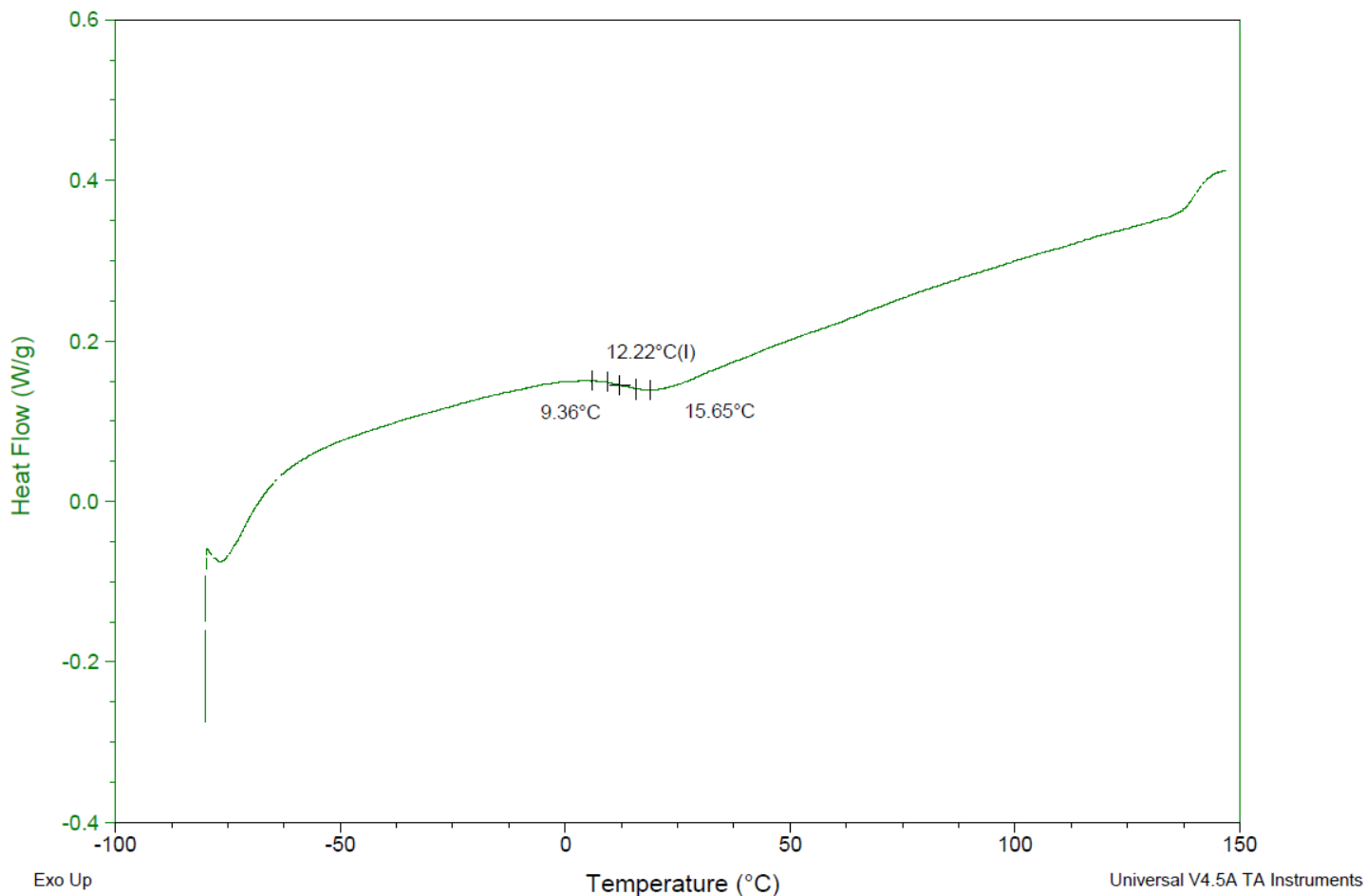
Sample: AI065 260223RAI-B
Size: 5.3000 mg
Method: Ramp

DSC

File: C:\...\COA\AI065 260223RAI-B.001

Run Date: 03-Mar-2026 12:06

Instrument: DSC Q2000 V24.11 Build 124



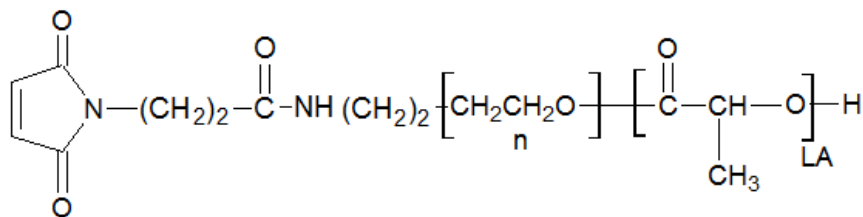
DSC

DSC Testing: 1-5 mg sample tested in crimped aluminum pan on a TA Instruments Model Q2000 with procedure equilibraion 100 °C, isothermal 5 minutes, equilibrate -80 °C, data on, ramp 10 °C/min to 150 °C. Tg = 12.22 °C

IV

Inherent Viscosity: 0.269 ± 0.006 dL/g (calculated from kinematic viscosity at 2% w/v Acetone on Rheosense microVISC, n=3) at 25°C.

Structure of copolymers



Approved By:
Amie Tyler
Quality Manager