

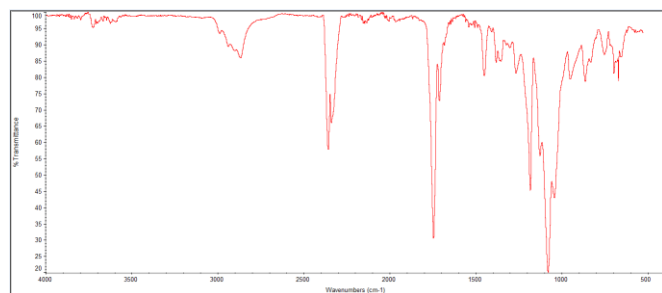
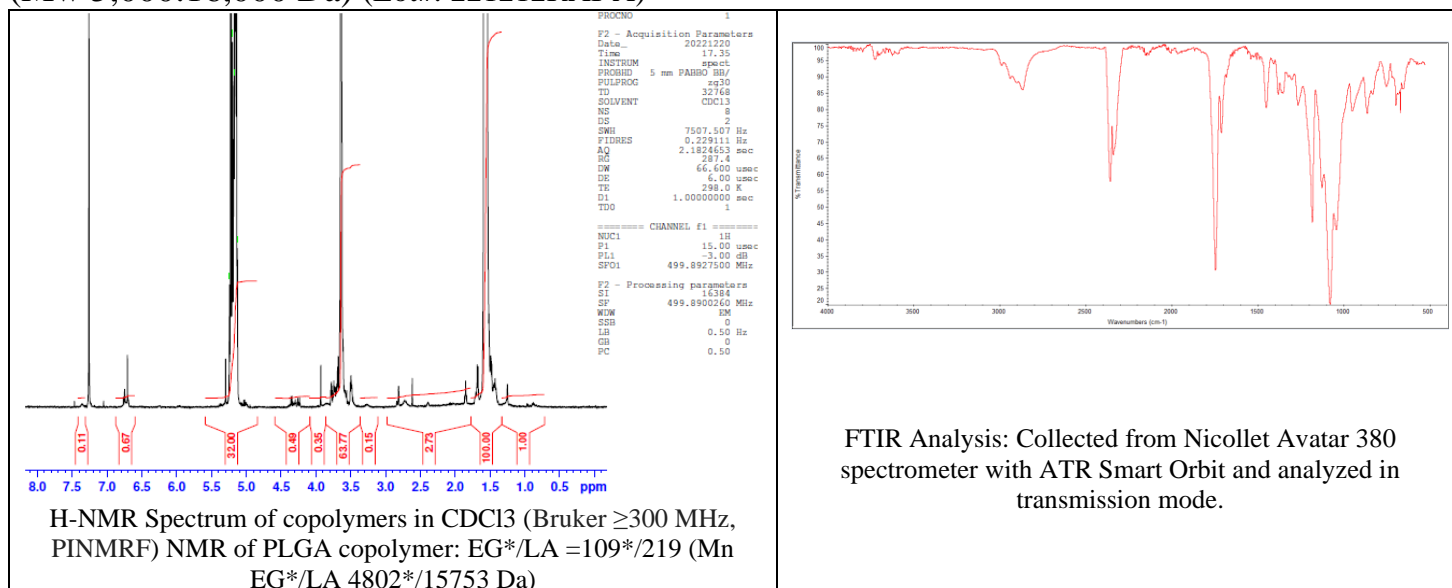
No. AI065

Certificate of Analysis

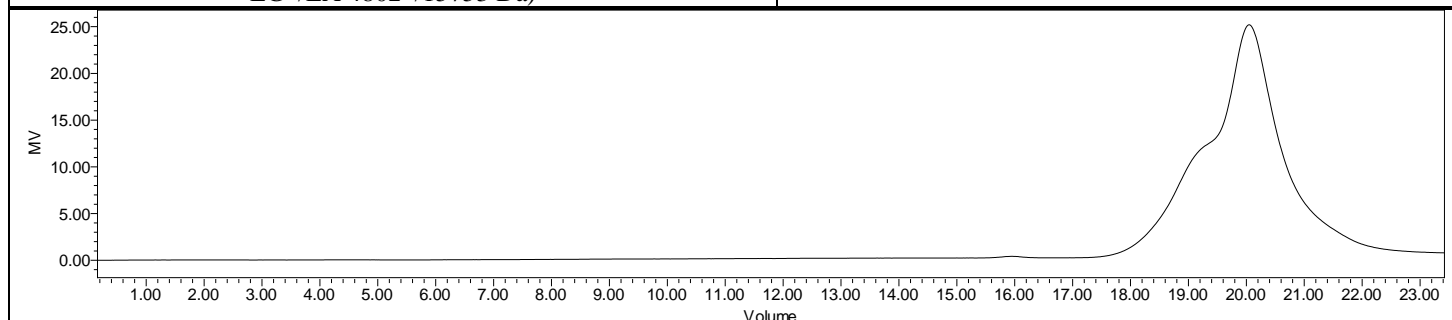


Product Name: Maleimide-Poly(ethylene glycol)-b-Poly(D,L-lactide)

(Mw 5,000:16,000 Da) (Lot#: 221212RAI-A)



FTIR Analysis: Collected from Nicolet Avator 380 spectrometer with ATR Smart Orbit and analyzed in transmission mode.



GPC-ES Analysis Method: Waters Breeze 2 system with 1 ml/min THF flow across three GPC columns. Detection via refractive index, calibrated against polystyrene standards.

Polymer	M _n (from GPC)	M _w (from GPC)	PDI
Mal-PEG-PDLLA	23,930	30,227	1.26
PEG-Precursor*		4800*	

*- from MFG data

• Structure of Mal-PEG-PDLLA copolymers

