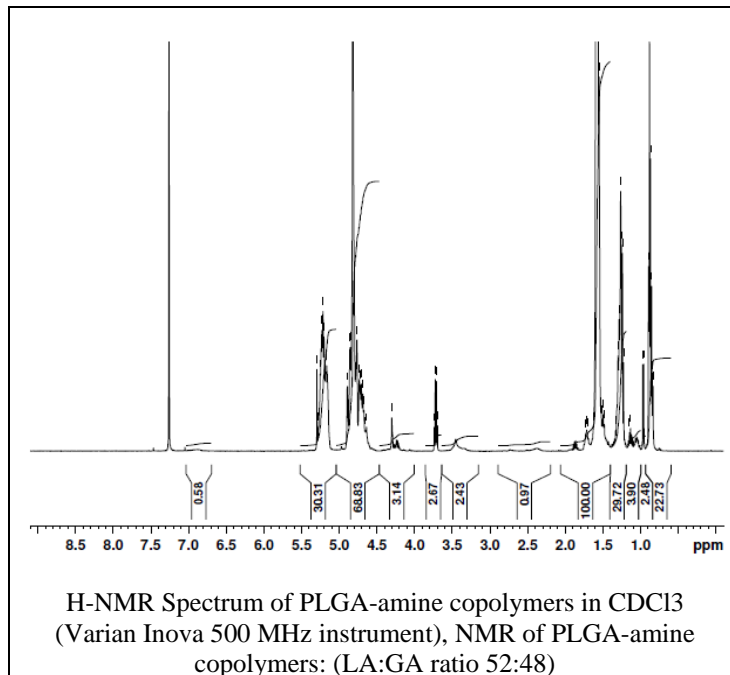
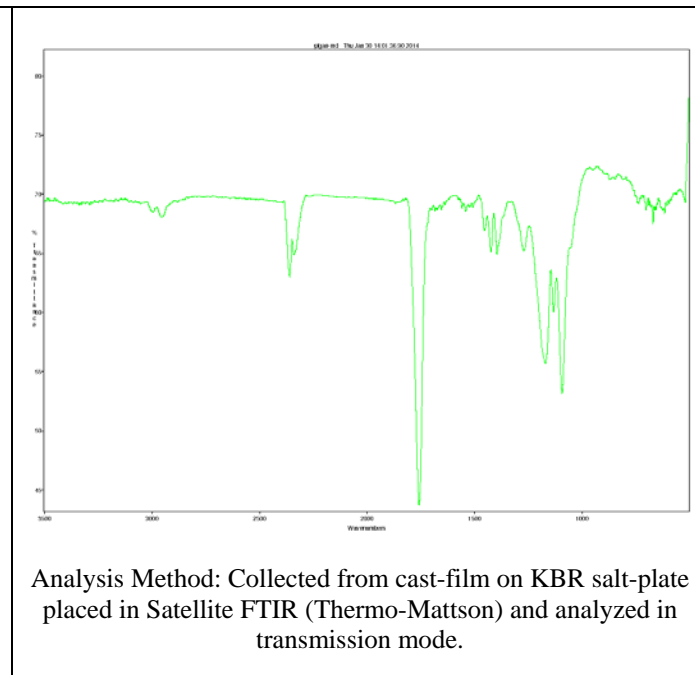


Product Name: Poly(lactide-co-glycolide) amine endcap (diamine) (Mw: 10,000-20,000Da, 50:50 LA:GA) (Lot#: 40116JSG-A)

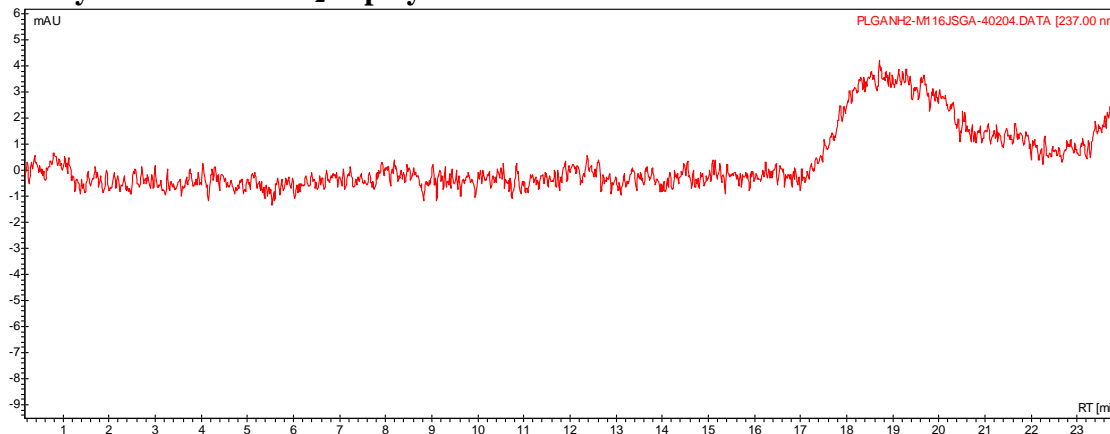
HNMR



FTIR



- GPC analysis of PLGA-NH₂ copolymers



Analysis Method: Varian Prostar system with 1 ml/min DCM flow across two PLgel Resipore columns (Agilent). Detection via UV/Vis, calibrated against polystyrene standards

Polymer	Mn (from GPC)	Mw (from GPC)	PDI
PLGA-NH ₂	12843	21160	1.65

- Structure of PLGA-NH₂ copolymers

