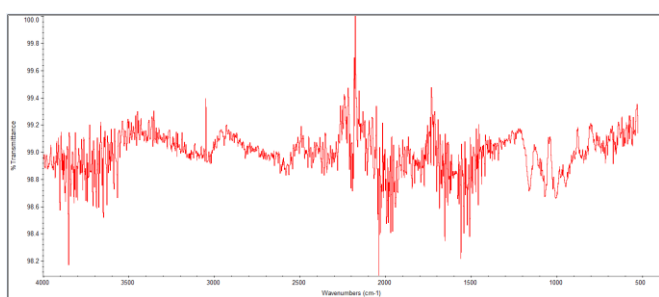
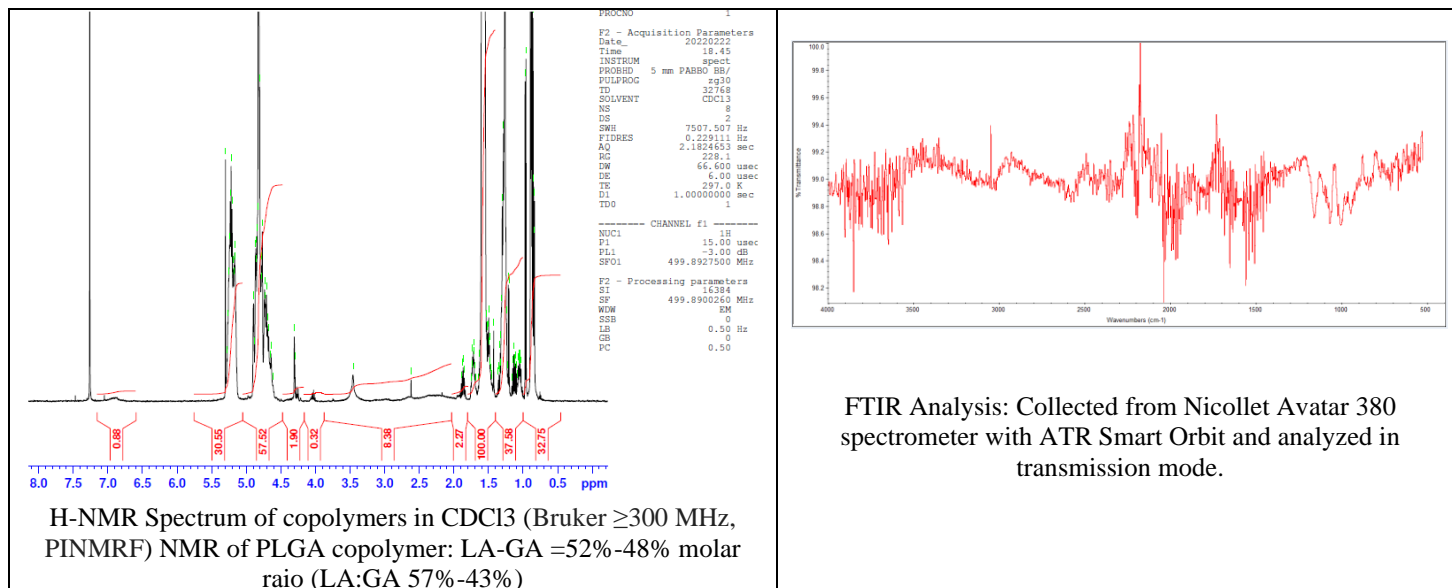


No. AI063

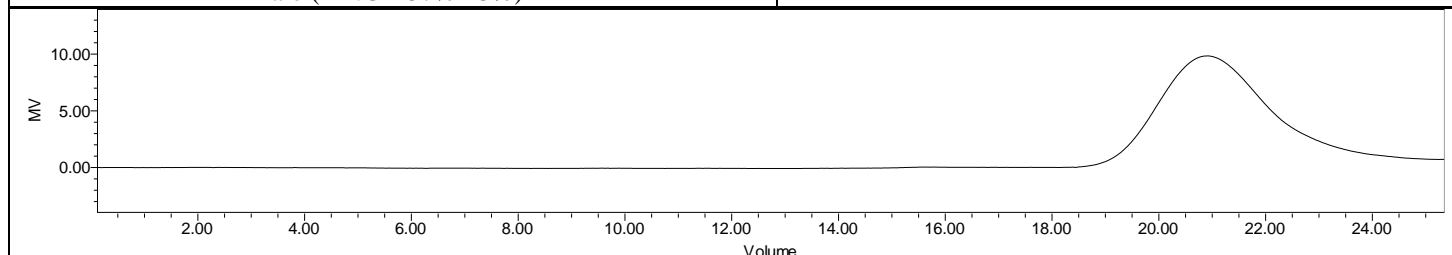
Certificate of Analysis



Product Name: Poly(lactide-co-glycolide) amine endcap (diamine)
(M_w ~10,000-25,000Da, 50:50 LA:GA) (Lot#: 220217RAI-A)



FTIR Analysis: Collected from Nicolet Avator 380 spectrometer with ATR Smart Orbit and analyzed in transmission mode.



GPC-ES Analysis Method: Waters Breeze 2 system with 1 ml/min THF flow across three GPC columns. Detection via refractive index, calibrated against polystyrene standards.

Polymer	M _n (from GPC)	M _w (from GPC)	PDI
PLGA-NH ₂	11,399	15,441	1.35

Structure of PLGA-NH₂ copolymers

