

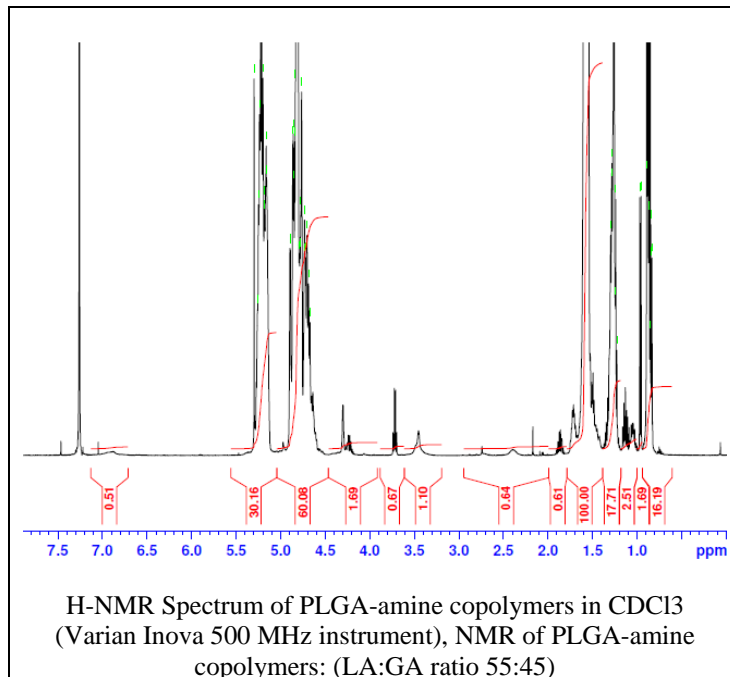
No. AI062

Certificate of Analysis

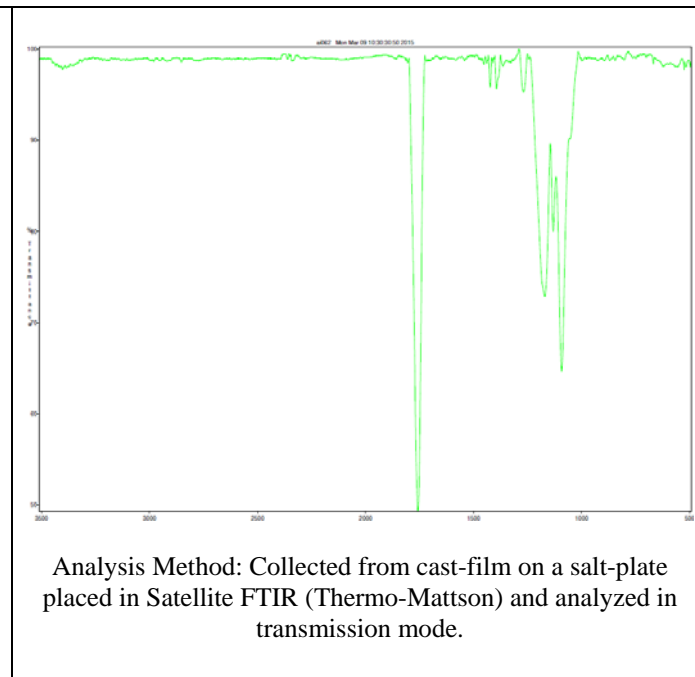


Product Name: Poly(lactide-co-glycolide) amine endcap (diamine) (Mw: 30,000-40,000Da, 50:50 LA:GA) (Lot#: 50225MJK)

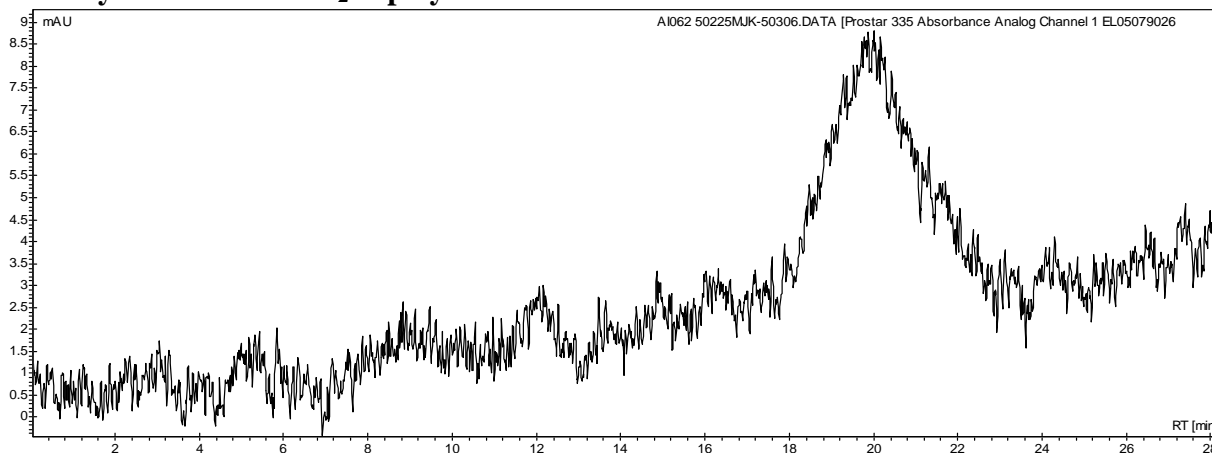
HNMR



FTIR



• GPC analysis of PLGA-NH₂ copolymers



Analysis Method: Varian Prostar system with 1 ml/min DCM flow across two PLgel Resipore columns (Agilent). Detection via UV/Vis, calibrated against polystyrene standards

Polymer	Mn (from GPC)	Mw (from GPC)	PDI
PLGA-NH ₂	14502	34294	2.36

• Structure of PLGA-NH₂ copolymers

