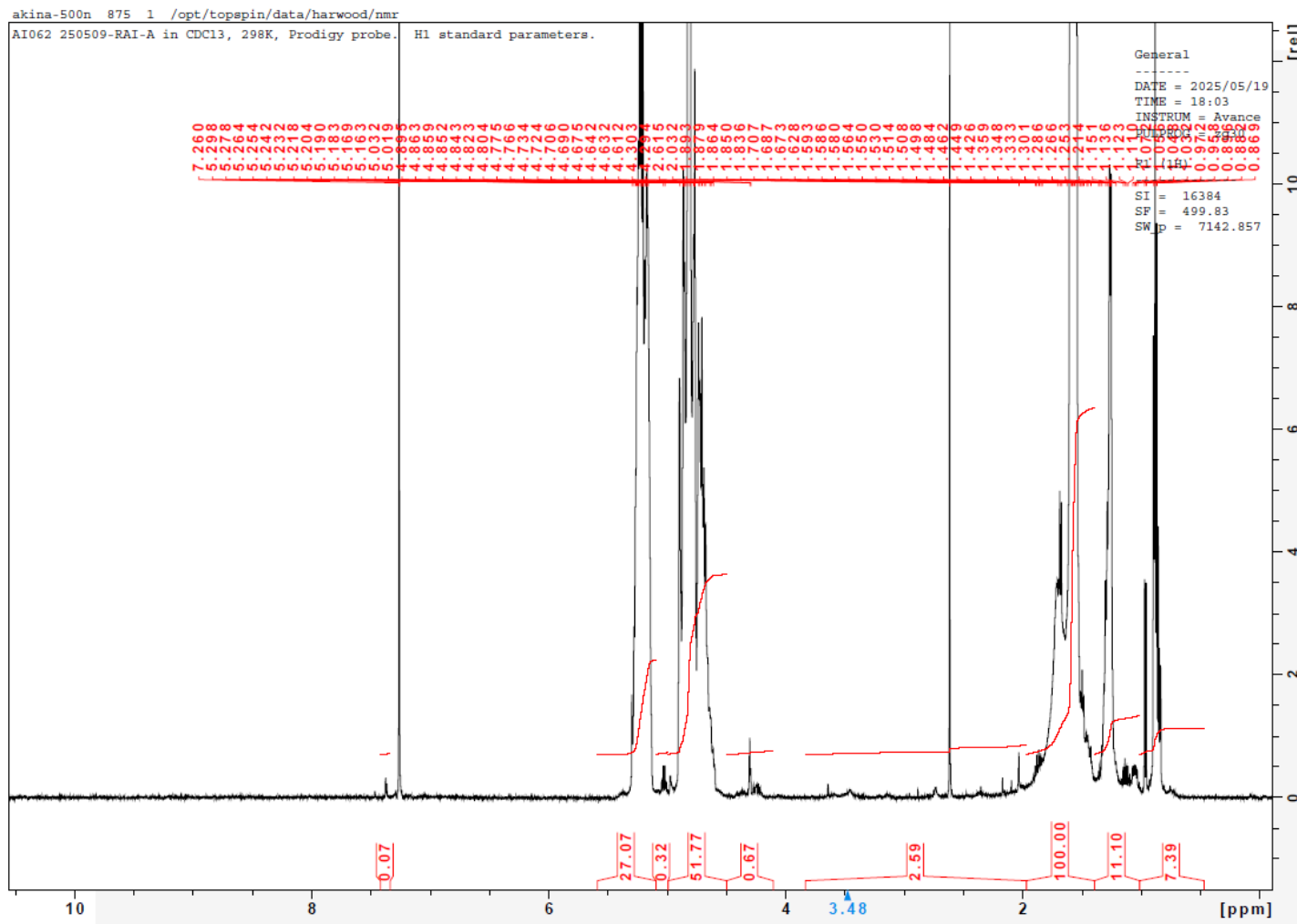


No. AI062 Certificate of Analysis

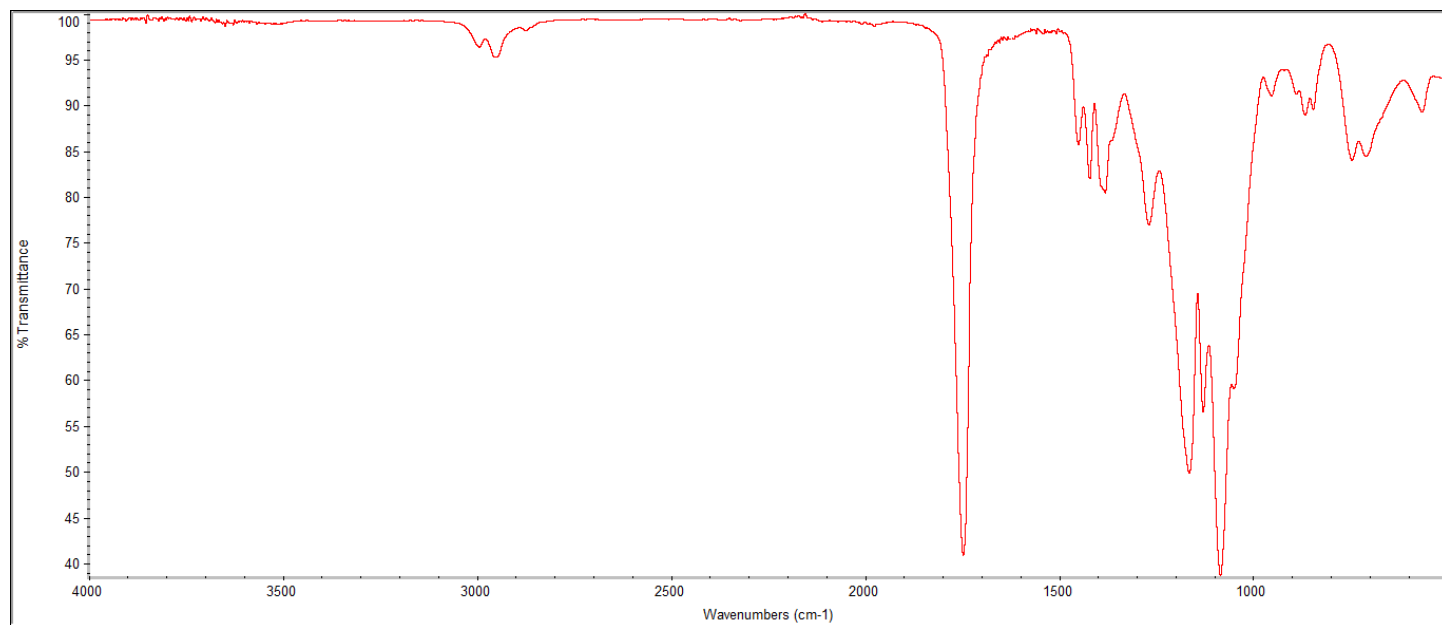
Product Name: Poly(lactide-co-glycolide) amine endcap (ethylene diamine)
(Mn: 10,000 - 30,000 Da, 50:50 LA:GA) (Lot#: 250509RAI-A)

H-NMR



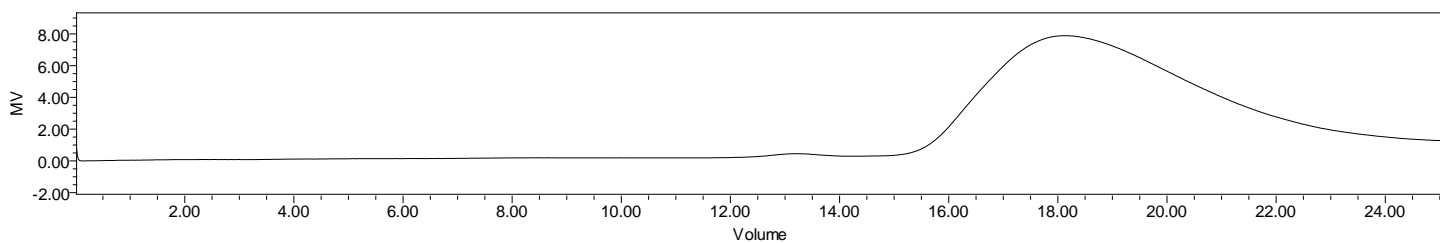
H-NMR Spectrum of copolymers in CDCl₃ (Bruker ≥300 MHz, PINMRF) NMR of PLGA-NH₂ copolymer: LA-GA =51%-49% (LA:GA 56%:44% Da)

FTIR



FTIR Analysis: Collected from IS5 ID7-ATR spectrometer (Thermo Scientific) and analyzed in transmission mode.

GPC-ES



Polymer	M _n (from GPC)	M _w (from GPC)	PDI
PLGA-NH ₂	37,549	53,366	1.42

GPC-ES Analysis Method: Waters Breeze 2 system with 1 ml/min THF flow across three GPC columns. Detection via refractive index, calibrated against polystyrene standards.

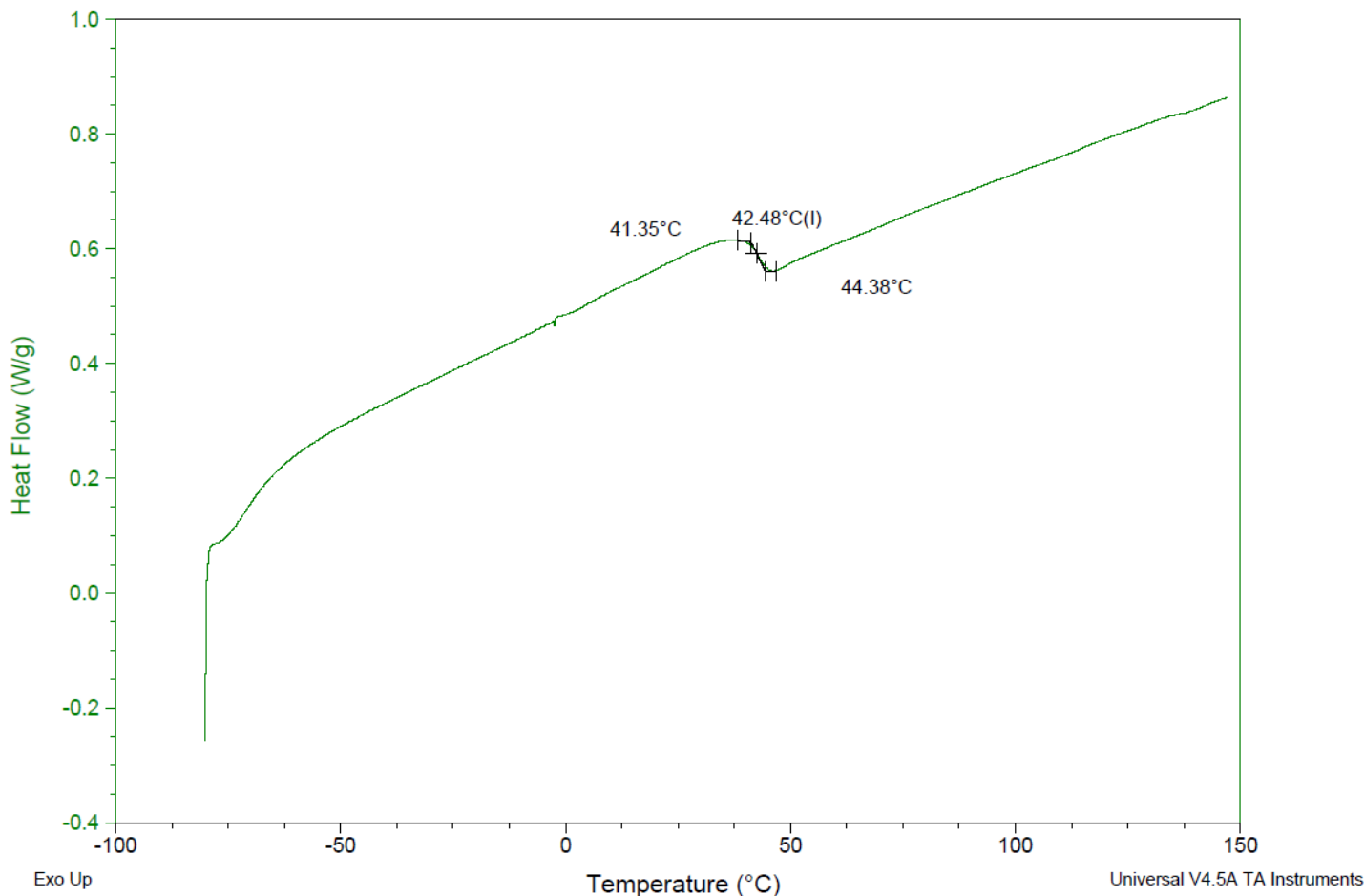
DSC

Sample: AI062 250509RAI-A
Size: 4.5000 mg
Method: Ramp

DSC

File: C:\...\COA\AI062 250509RAI-A.002

Run Date: 16-May-2025 09:32
Instrument: DSC Q2000 V24.11 Build 124

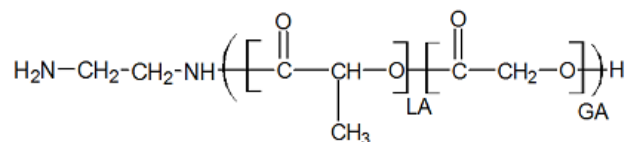


DSC Testing: 1-5 mg sample tested in crimped aluminum pan on a TA Instruments Model Q2000 with procedure equilibraion 100 °C, isothermal 5 minutes, equilibrate -80 °C, data on, ramp 10 °C/min to 150 °C. Tg = 42.48 °C

IV

Inherent Viscosity: 0.240 ± 0.003 dL/g (calculated from kinematic viscosity at 2% w/v Acetone on Rheosense microVISC, n=3) at 25°C.

Structure of copolymers



Approved By:
Amie Tyler
Quality Manager