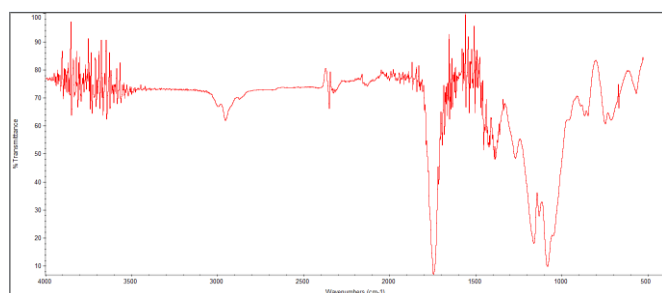
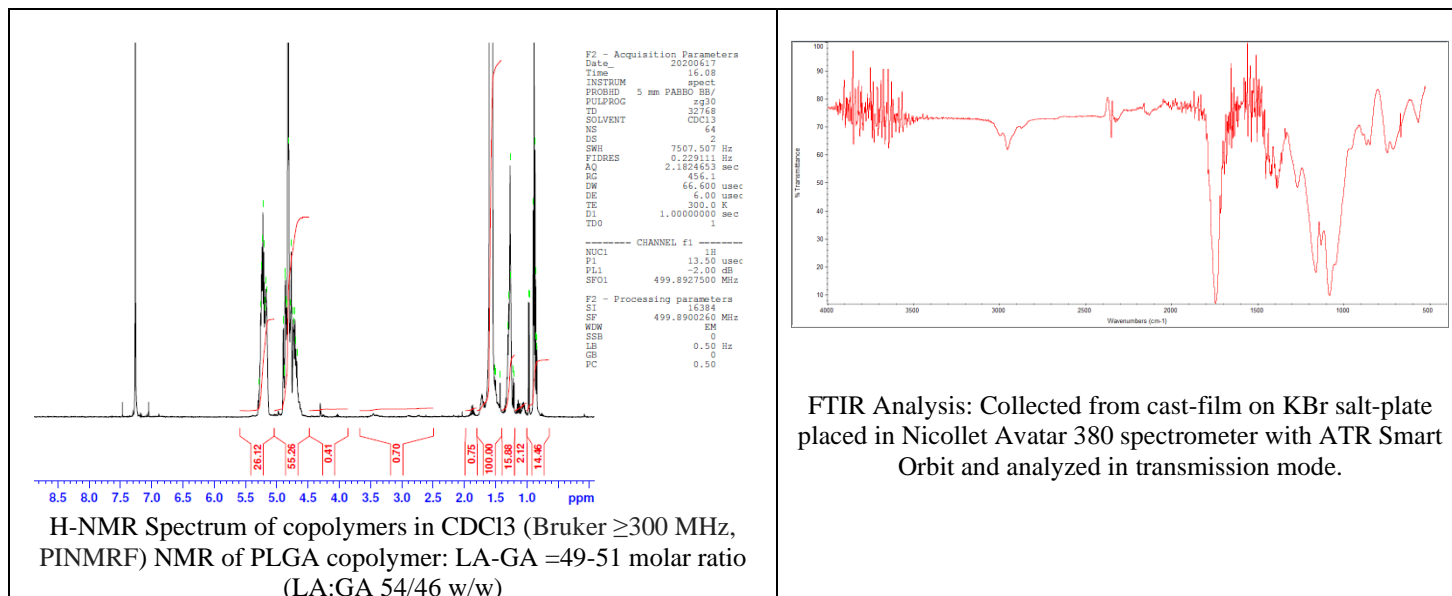


# No. AI062

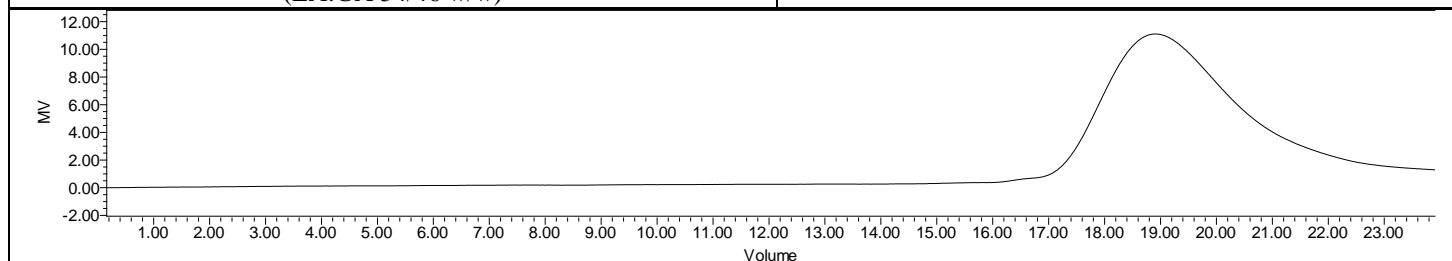
# Certificate of Analysis



Product Name: Poly(lactide-co-glycolide) amine endcap (ethylene diamine)  
(Mn: 10,000 - 30,000 Da, 50:50 LA:GA) (Lot#: 200605RAI-B)



FTIR Analysis: Collected from cast-film on KBr salt-plate placed in Nicolet Avatar 380 spectrometer with ATR Smart Orbit and analyzed in transmission mode.



GPC Analysis Method: Waters Breeze 2 system with 1 ml/min THF flow across three GPC columns. Detection via refractive index, calibrated against polystyrene standards.

Polymer	M <sub>n</sub> (from GPC)	M <sub>w</sub> (from GPC)	PDI
PLGA-NH <sub>2</sub>	26,116	48,272	1.85

## • Structure of PLGA-NH<sub>2</sub> copolymers

