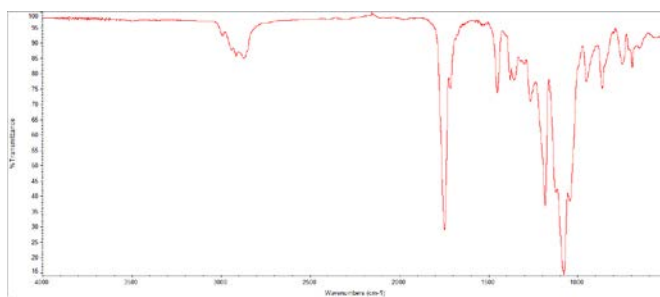
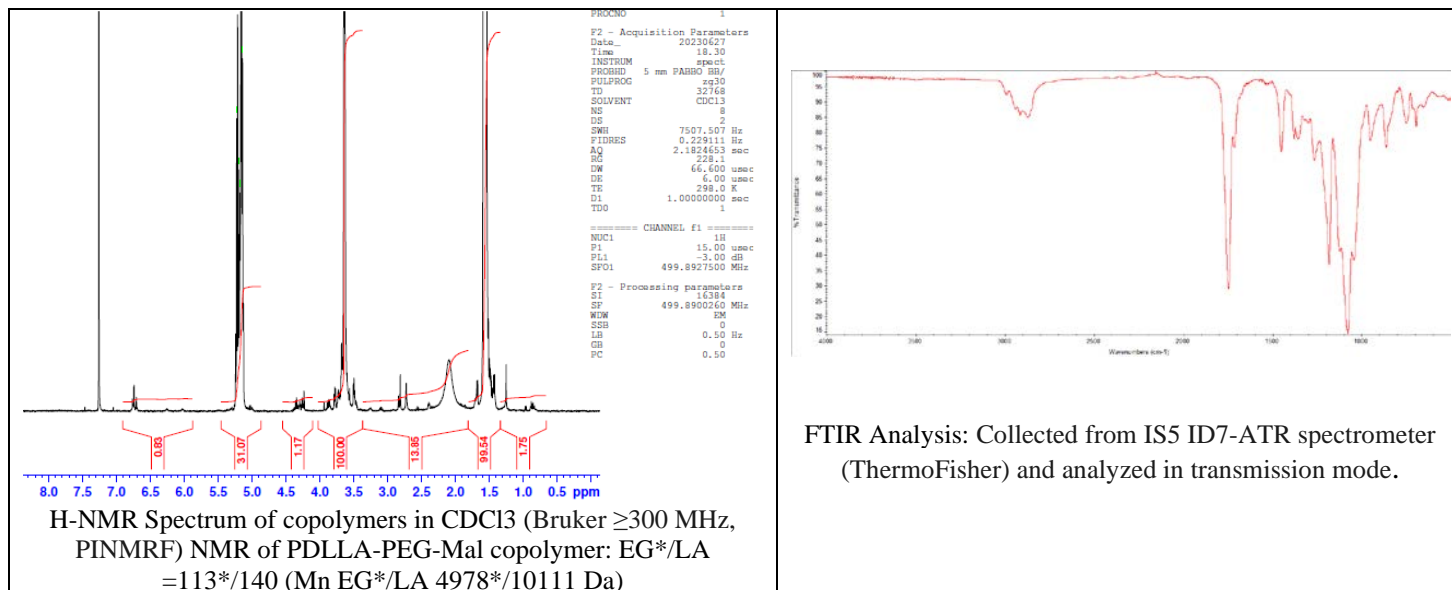


No. AI060

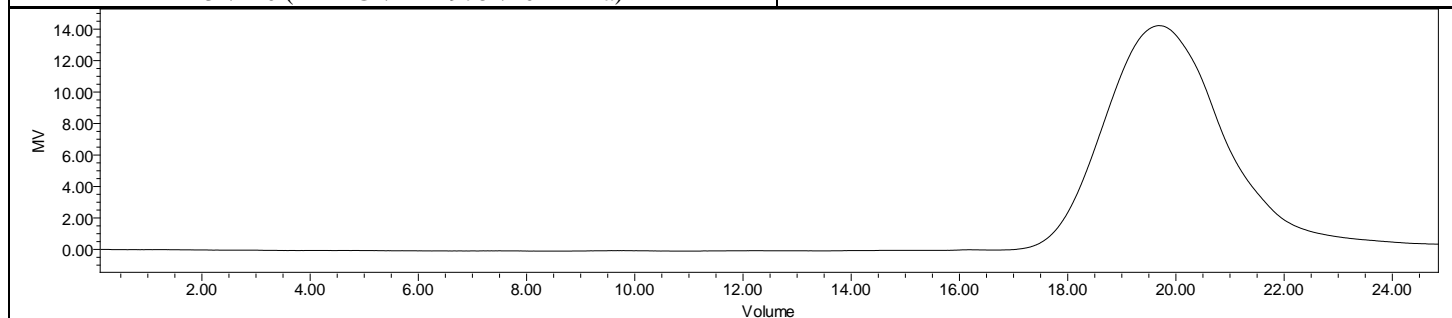
Certificate of Analysis



Product Name: Maleimide-Poly(ethylene glycol)-b-Poly(D,L-lactide)
(Mw 5,000:10,000 Da) (Lot#: 230619RAI-B)



FTIR Analysis: Collected from IS5 ID7-ATR spectrometer (ThermoFisher) and analyzed in transmission mode.

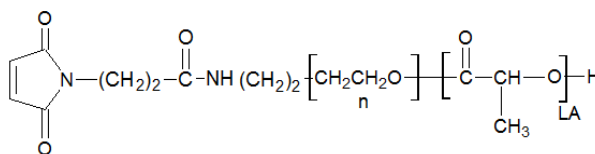


GPC-ES Analysis Method: Waters Breeze 2 system with 1 ml/min THF flow across three GPC columns. Detection via refractive index, calibrated against polystyrene standards.

Polymer	M _n (from GPC)	M _w (from GPC)	PDI
PDLLA-PEG-Mal	24,263	34,937	1.44
PEG-Precursor*		4996*	

*- from MFG data

Structure of Mal-PEG-PDLLA copolymers



Approved By:
Amie Tyler
Quality Manager