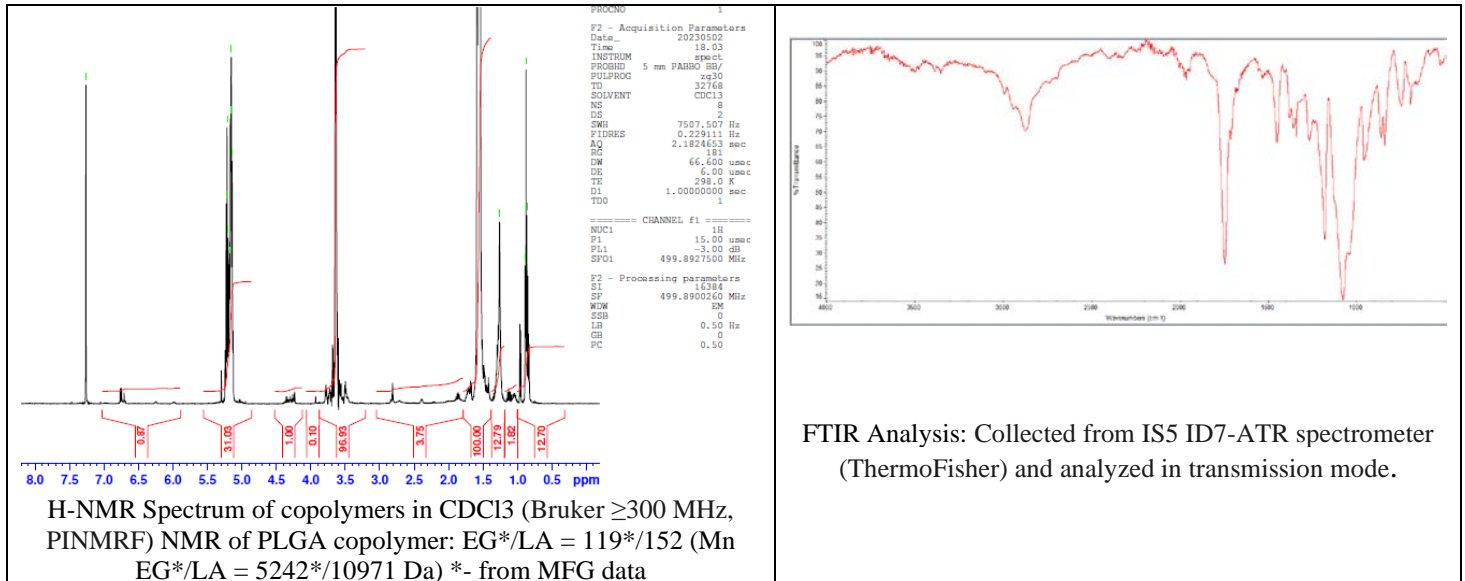


No. AI060

Certificate of Analysis

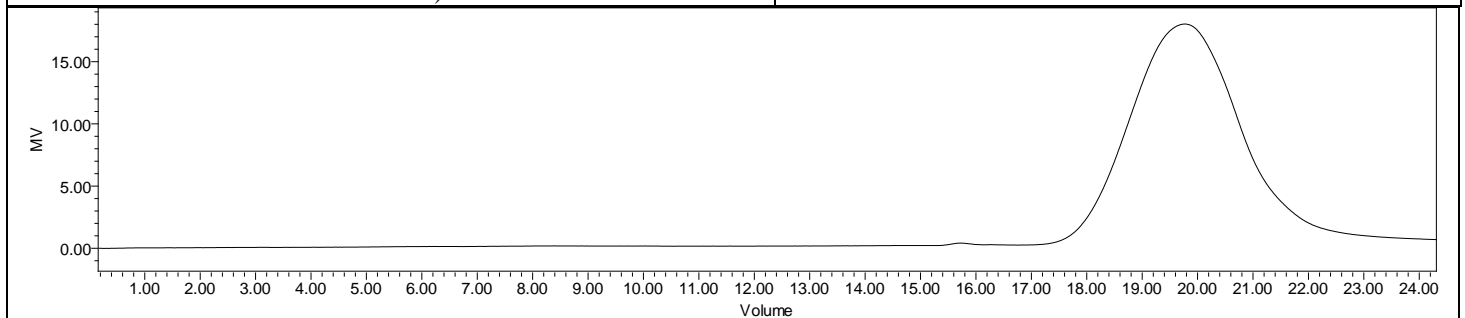


Product Name: Maleimide-Poly(ethylene glycol)-b-Poly(D,L-lactide)
(Mw 5,000:10,000 Da) (Lot#: 230425RAI-B)



FTIR Analysis: Collected from IS5 ID7-ATR spectrometer (ThermoFisher) and analyzed in transmission mode.

H-NMR Spectrum of copolymers in CDCl₃ (Bruker ≥300 MHz, PINMRF) NMR of PLGA copolymer: EG*/LA = 119*/152 (Mn EG*/LA = 5242*/10971 Da) *- from MFG data

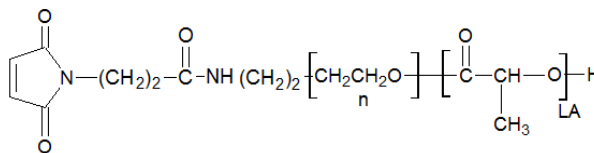


GPC-ES Analysis Method: Waters Breeze 2 system with 1 ml/min THF flow across three GPC columns. Detection via refractive index, calibrated against polystyrene standards.

Polymer	M _n (from GPC)	M _w (from GPC)	PDI
Mal-PEG-PDLLA	22,839	32,952	1.44
PEG-Precursor*		5258*	

*- from MFG data

- Structure of Mal-PEG-PDLLA copolymers



Approved By:
Amie Tyler
Quality Manager