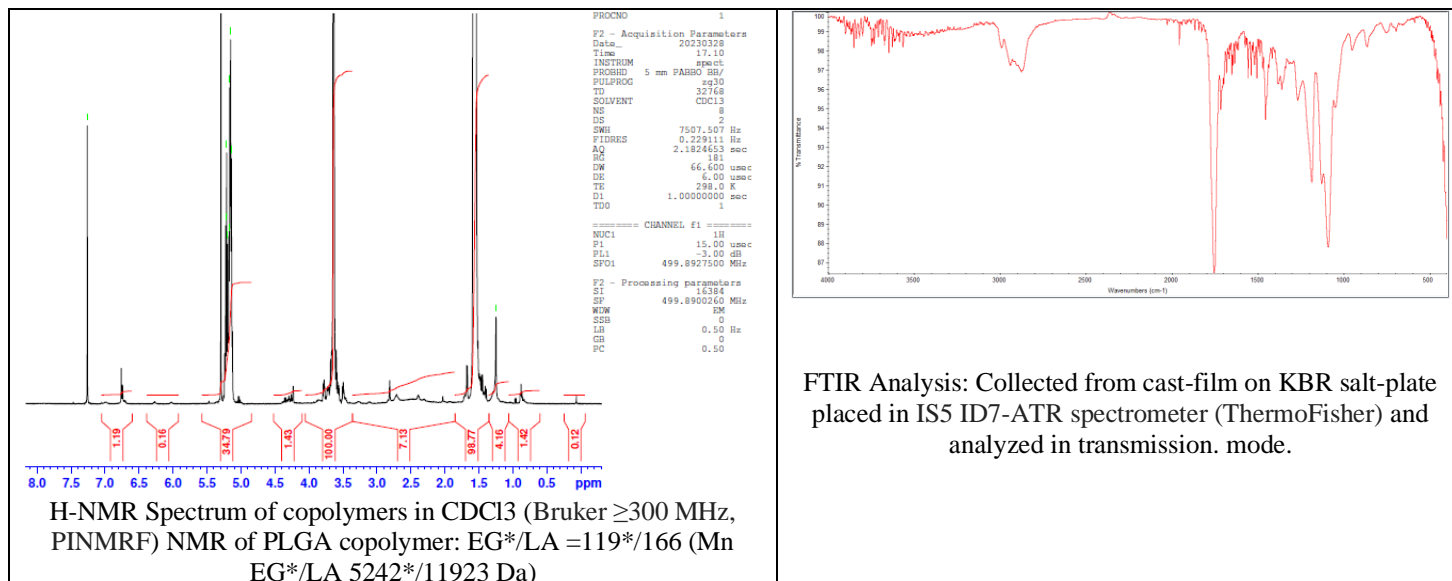


# No. AI060

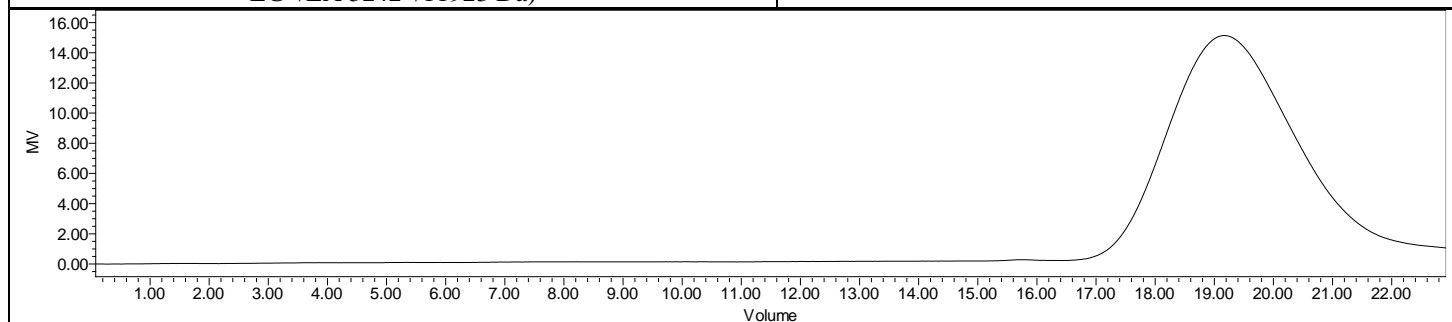
# Certificate of Analysis



Product Name: Maleimide-Poly(ethylene glycol)-b-Poly(D,L-lactide)  
(Mw 5,000:10,000 Da) (Lot#: 230320RAI-A)



FTIR Analysis: Collected from cast-film on KBR salt-plate placed in IS5 ID7-ATR spectrometer (ThermoFisher) and analyzed in transmission. mode.



GPC-ES Analysis Method: Waters Breeze 2 system with 1 ml/min THF flow across three GPC columns. Detection via refractive index, calibrated against polystyrene standards.

Polymer	M <sub>n</sub> (from GPC)	M <sub>w</sub> (from GPC)	PDI
Mal-PEG-PDLLA	28,470	45,721	1.61
PEG-Precursor*		5258	

\*- from MFG data

## • Structure of Mal-PEG-PDLLA copolymers

