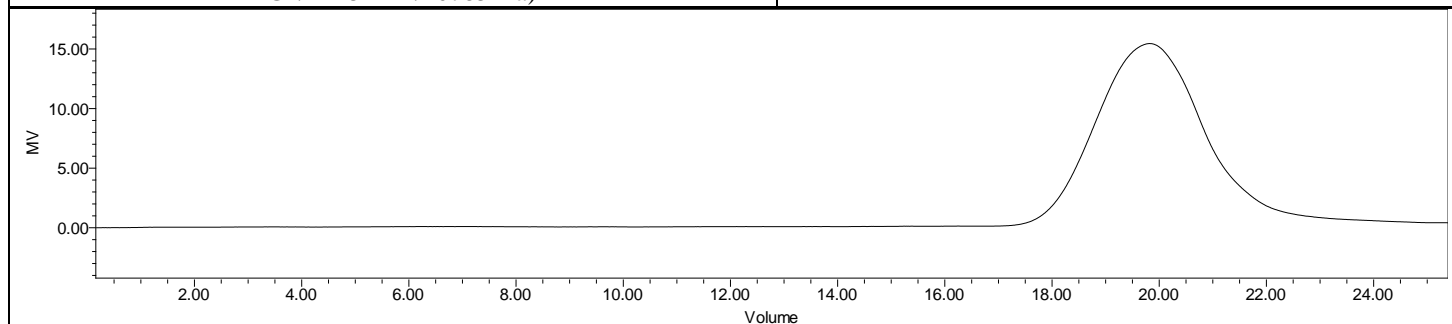
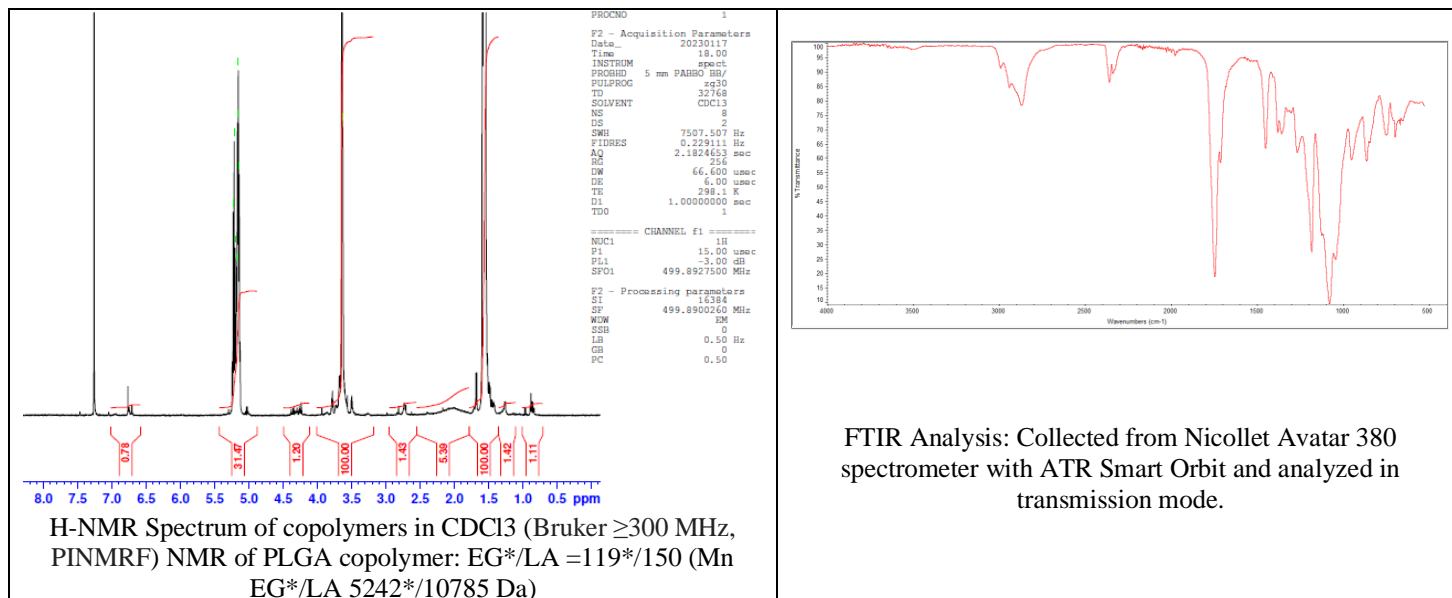


No. AI060

Certificate of Analysis



Product Name: Maleimide-Poly(ethylene glycol)-b-Poly(D,L-lactide)
(Mw 5,000:10,000 Da) (Lot#: 230104RAI-A)



GPC-ES Analysis Method: Waters Breeze 2 system with 1 ml/min THF flow across three GPC columns. Detection via refractive index, calibrated against polystyrene standards.

Polymer	M _n (from GPC)	M _w (from GPC)	PDI
Mal-PEG-PDLLA	23,686	32707	1.38
PEG-Precursor*		5258*	

*- from MFG data

• Structure of Mal-PEG-PDLLA copolymers

