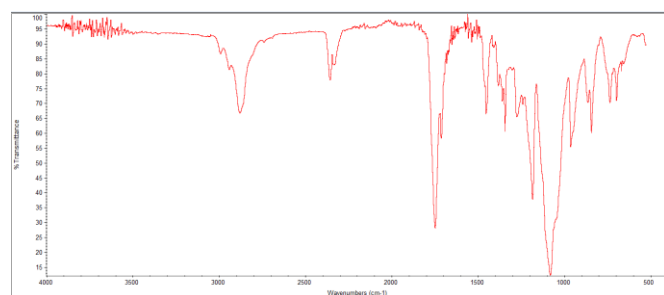
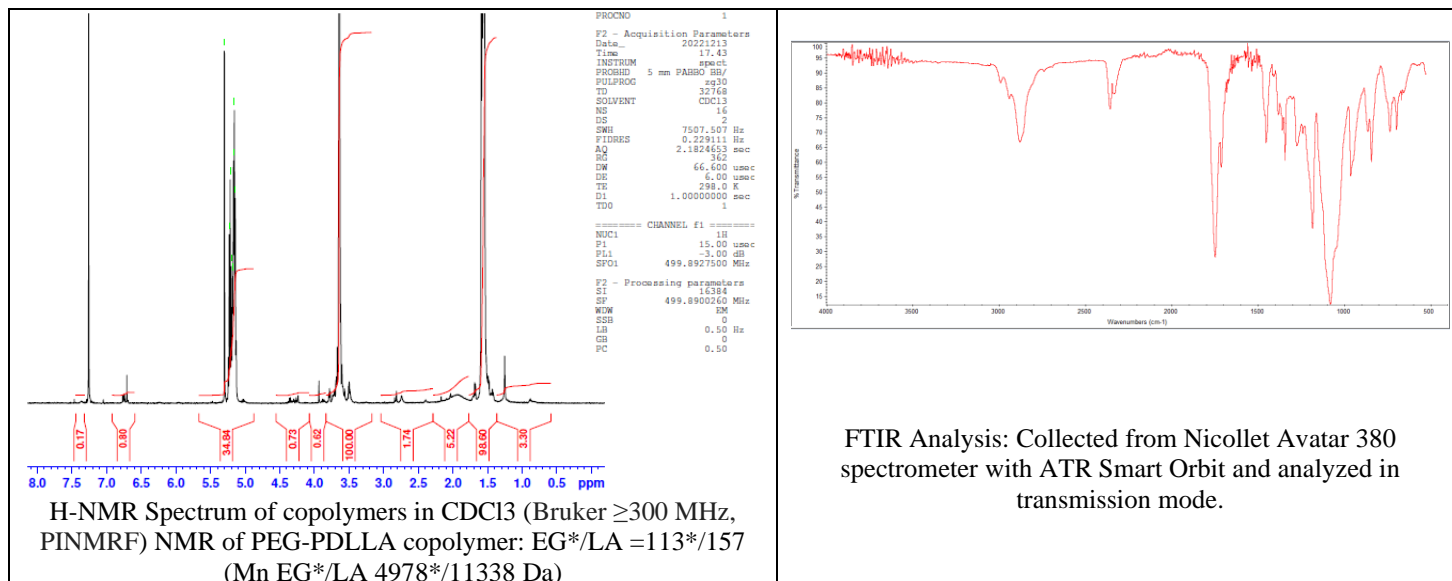


# No. AI060

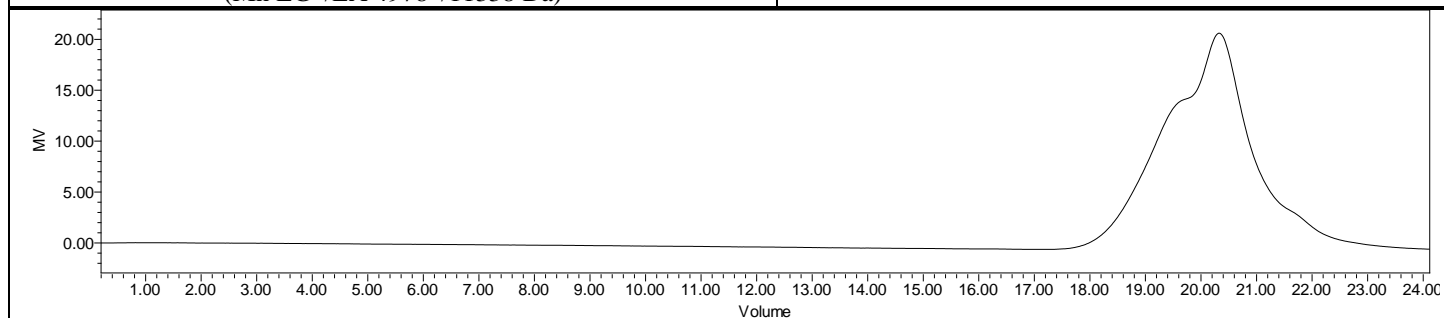
# Certificate of Analysis



Product Name: Maleimide-Poly(ethylene glycol)-b-Poly(D,L-lactide)  
(Mw 5,000:10,000 Da) (Lot#: 221206RAI-B)



FTIR Analysis: Collected from Nicolet Avator 380 spectrometer with ATR Smart Orbit and analyzed in transmission mode.



GPC-ES Analysis Method: Waters Breeze 2 system with 1 ml/min THF flow across three GPC columns. Detection via refractive index, calibrated against polystyrene standards.

Polymer	M <sub>n</sub> (from GPC)	M <sub>w</sub> (from GPC)	PDI
Mal-PEG-PDLLA	19,649	27,073	1.38
PEG-Precursor*		4996*	

\*- from MFG data

## • Structure of Mal-PEG-PDLLA copolymers

