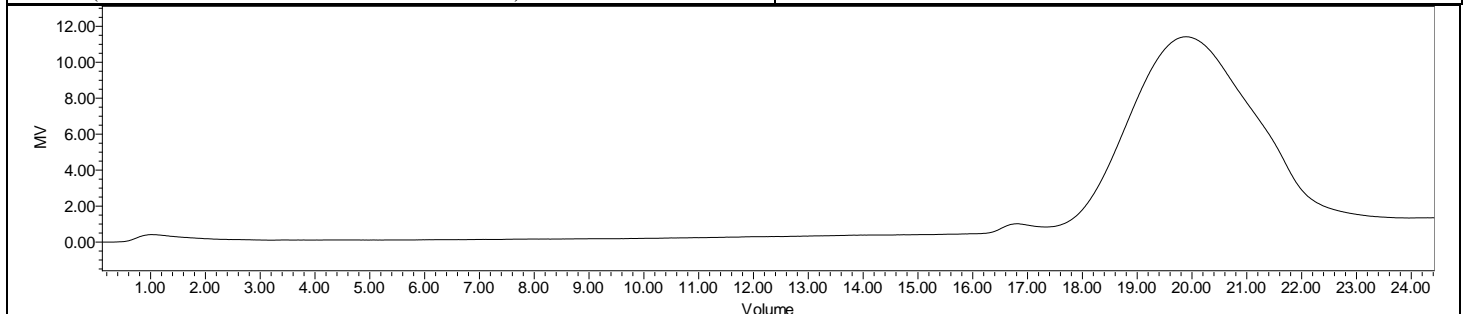
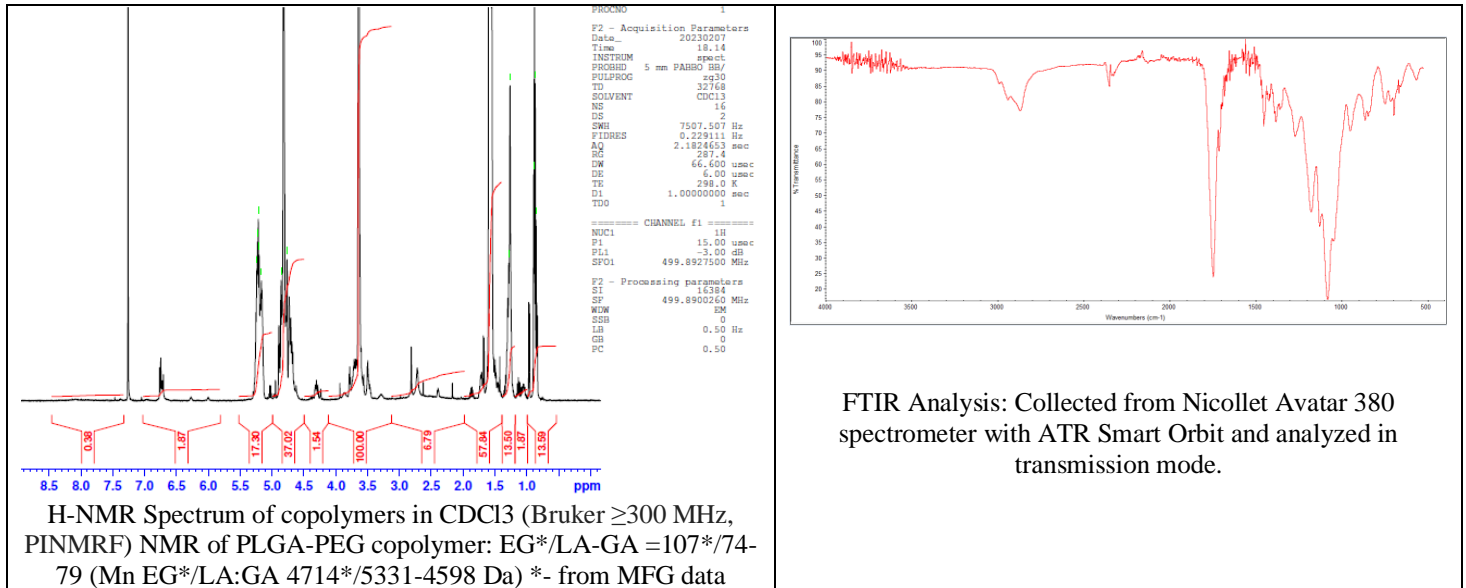


No. AI053

Certificate of Analysis



Product Name: Maleimide-Poly(ethylene glycol)-*b*-Poly(lactide-co-glycolide) diblock copolymers (50:50 LA:GA, $M_w \sim 5,000:10,000$ Da) (Lot #230126RAI-A)



GPC-ES Analysis Method: Waters Breeze 2 system with 1 ml/min THF flow across three GPC columns. Detection via refractive index, calibrated against polystyrene standards.

Polymer	M_n (from GPC)	M_w (from GPC)	PDI
PLGA-PEG-Mal	17,606	28,336	1.61
Mal-PEG precursor*	4700*		

*- from MFG data

Structure of Mal-PEG-PLGA diblock copolymers

