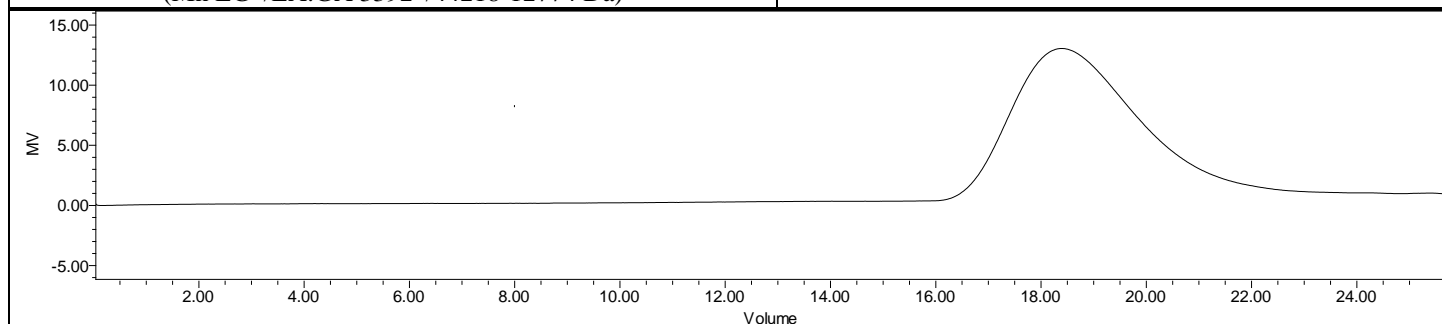
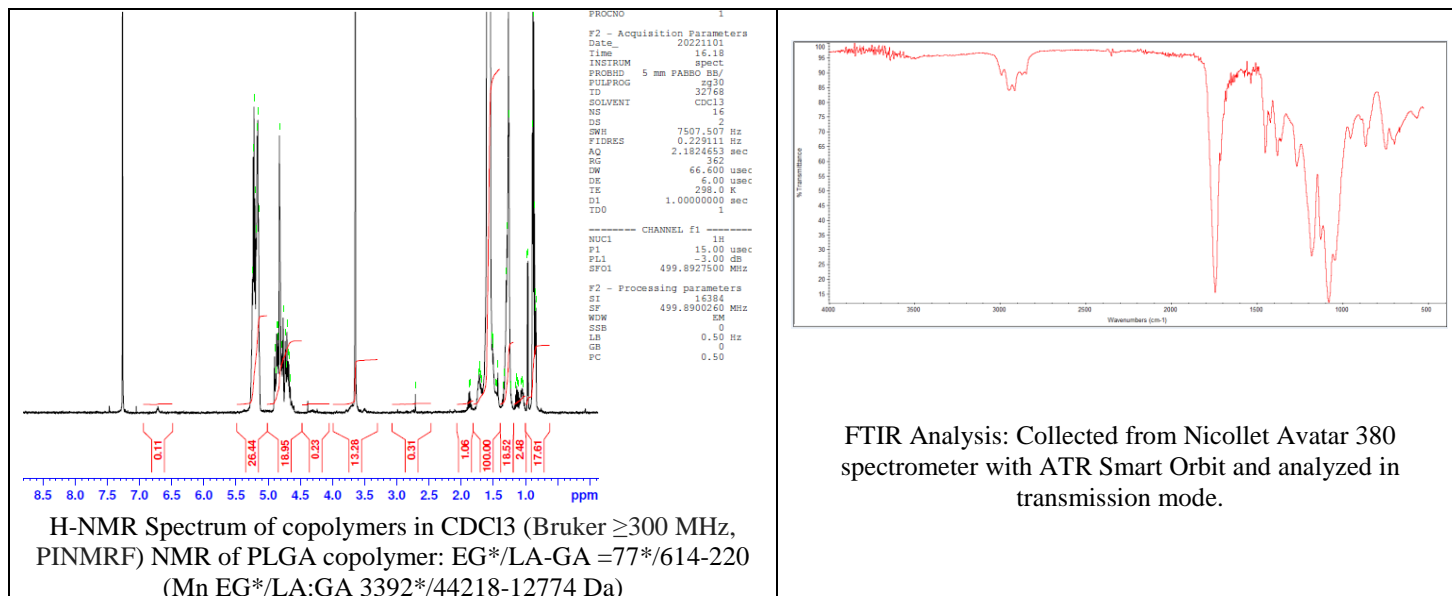


No. AI052

Certificate of Analysis



Product Name: Maleimide-Poly(ethylene glycol)-*b*-Poly(lactide-co-glycolide) diblock copolymers (75:25 LA:GA, Mw~3,400-60,000 Da) (Lot#: 221026RAI-A)



GPC-ES Analysis Method: Waters Breeze 2 system with 1 ml/min THF flow across three GPC columns. Detection via refractive index, calibrated against polystyrene standards.

Polymer	M _n (from GPC)	M _w (from GPC)	PDI
PLGA-PEG-Mal	40,966	71,151	1.73
PEG-Precursor*		3400*	

*- from MFG data

• Structure of PEG-PLGA-Mal diblock copolymers

