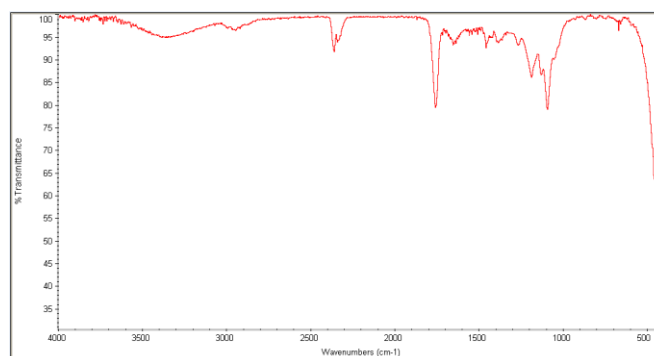
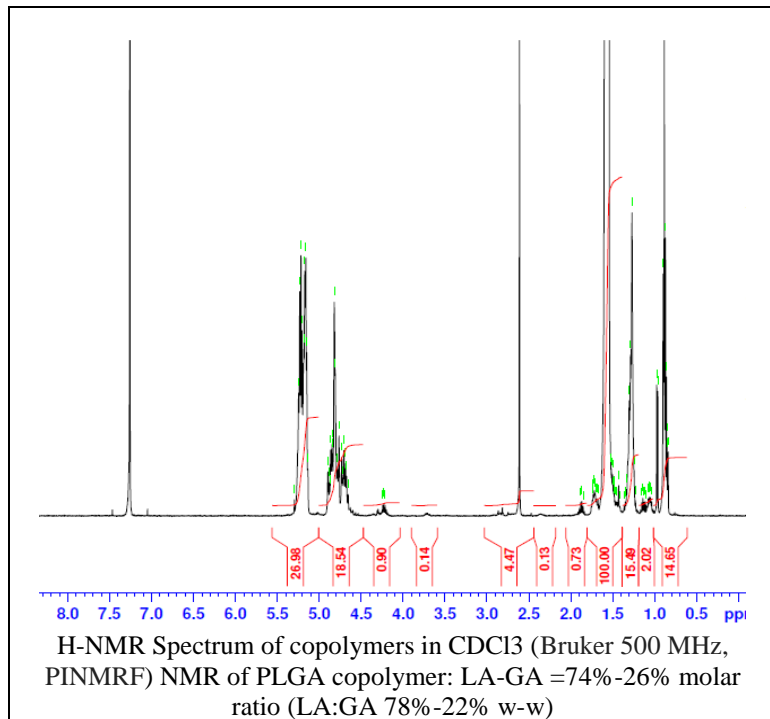


No. AI051

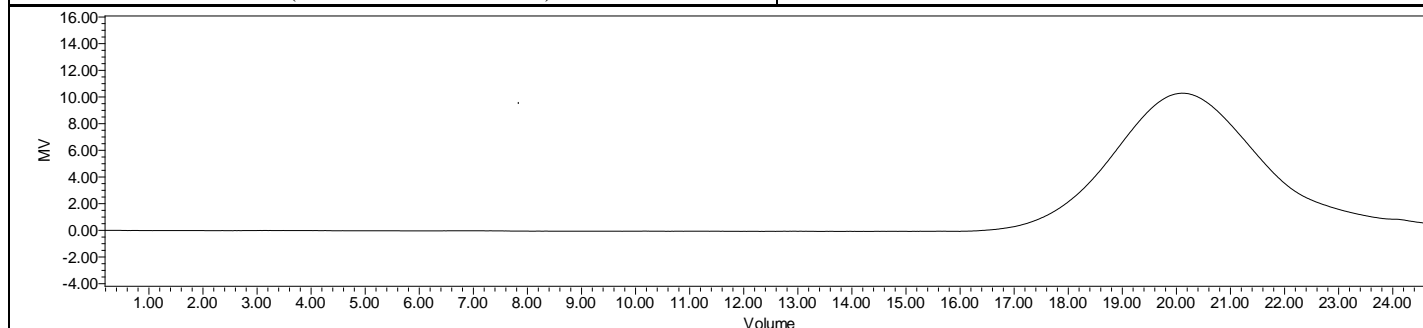
Certificate of Analysis



Product Name: Poly(lactide-co-glycolide (75:25)) amine (succinic acid dihydrazide endcap) (Mn: 10,000-15,000Da) (Lot#: 190702RAI-A)



FTIR Analysis: Collected from cast-film on KBr salt-plate placed in Nicolet Avatar 320 spectrometer and analyzed in transmission mode.



GPC Analysis Method: Waters Breeze 2 system with 1 ml/min THF flow across three GPC columns. Detection via refractive index, calibrated against polystyrene standards.

Polymer	M _n (from GPC)	M _w (from GPC)	PDI
PLGA-NH ₂	14,963	28,478	1.90

Structure of PLGA-NH₂ copolymers

