

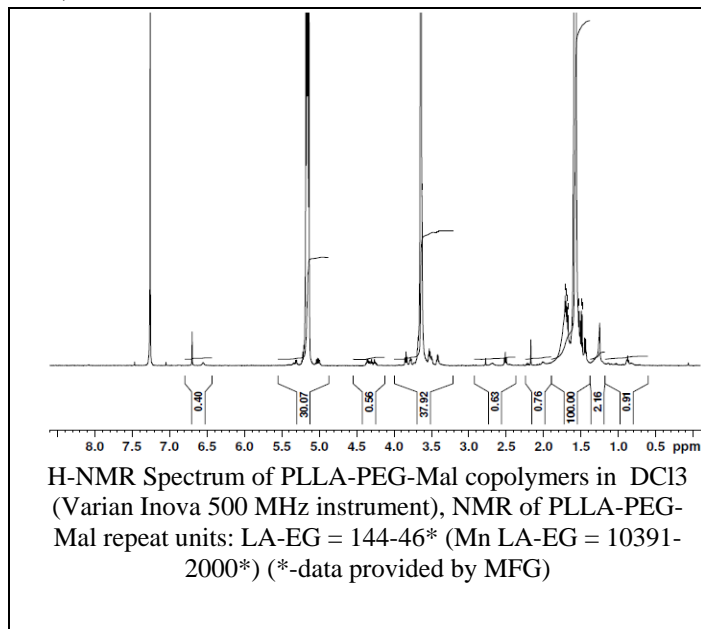
No. AI50

Certificate of Analysis

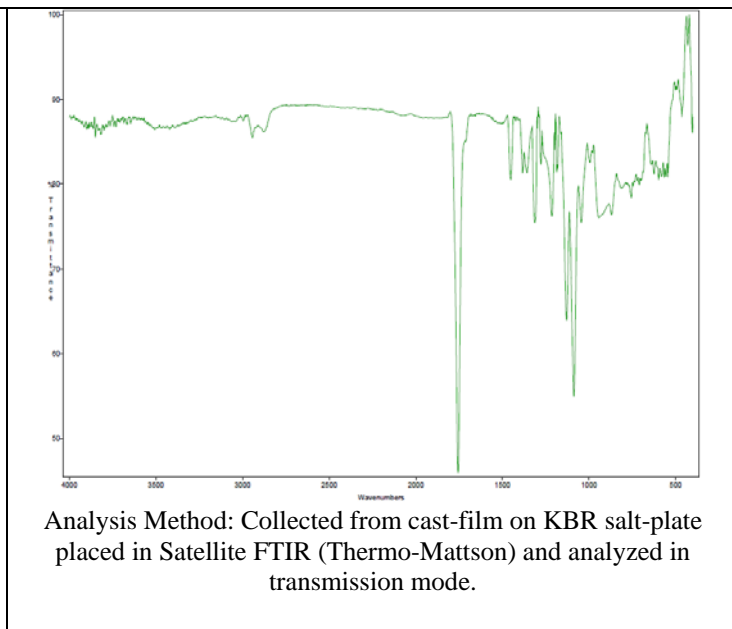


Product Name: Poly(L-lactide)-b-Poly(ethylene glycol)-Maleimide copolymers
(MW 10,000:2,000 Da) (Lot#: 30730JSG)

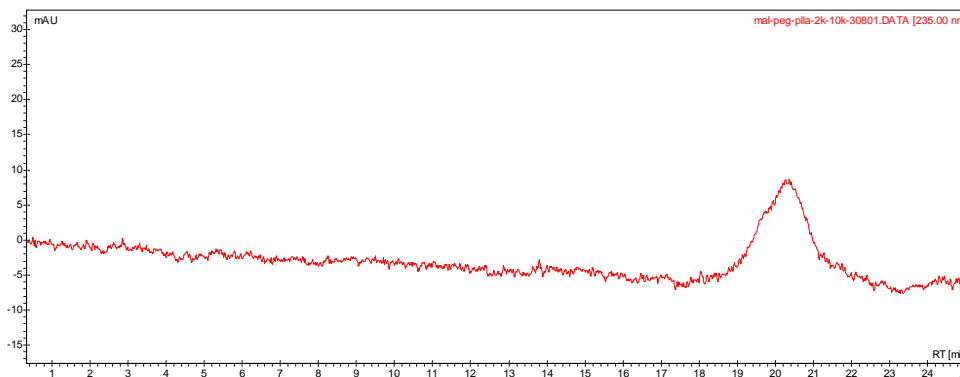
H-NMR



FTIR



- **GPC analysis of PLLA-PEG-Mal copolymers**



Analysis Method: Varian Prostar system with 1 ml/min DCM flow across two Phenogel 5u columns and one PLgel Resipore column (Agilent). Detection via UV/Vis, calibrated against polystyrene standards

Polymer	Mn (from GPC)	Mw (from GPC)	PDI
PLLA-PEG-Mal	14627	21432	1.47
PEG Precursor	Average Mn (GFC) 2000*		

*-data provided by manufacturer

- **Structure of PLLA-PEG-Mal copolymers**

