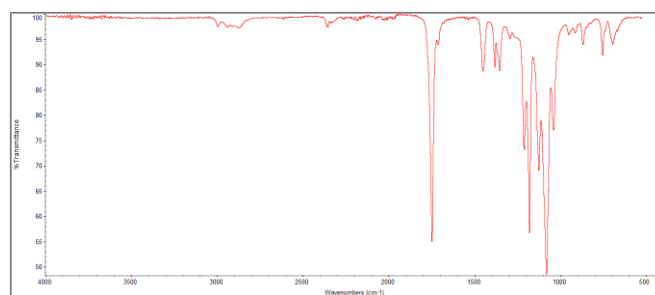
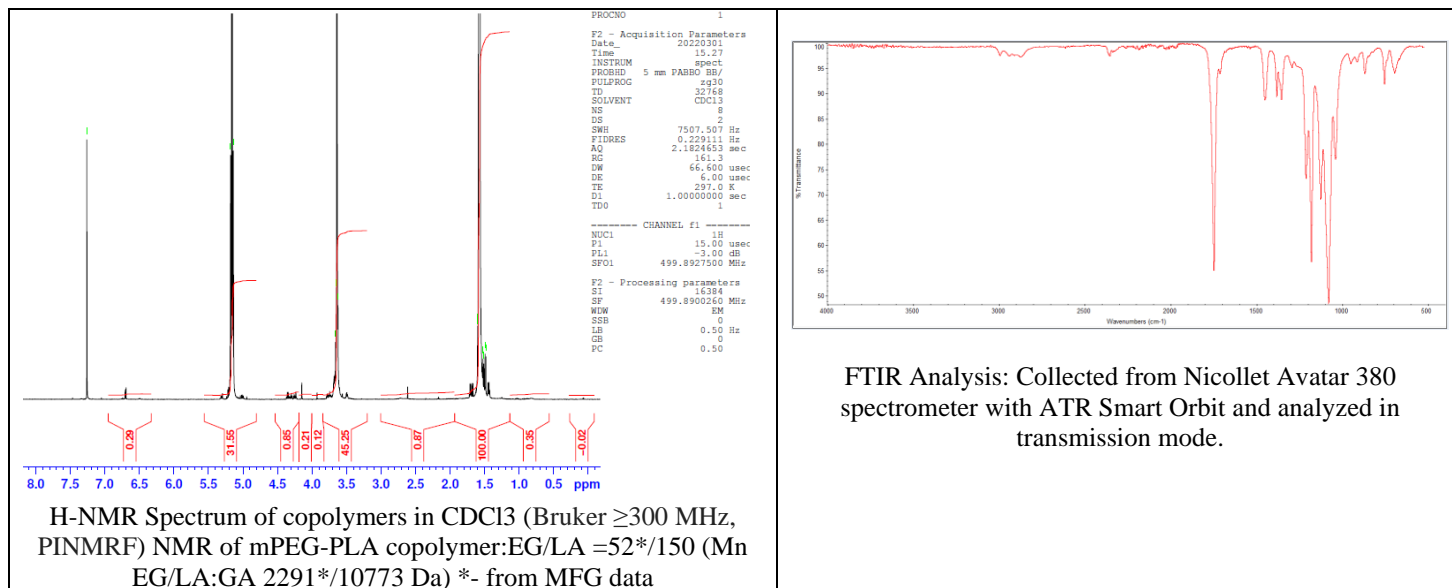


No. AI050

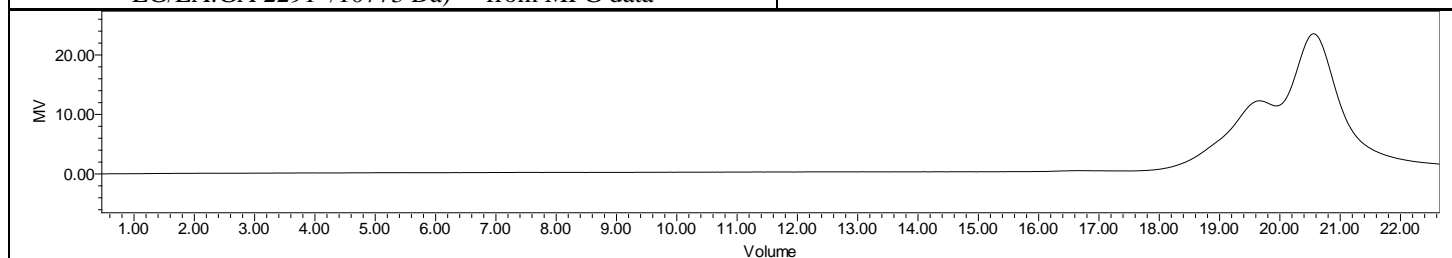
Certificate of Analysis



Product Name: Maleimide-Poly(ethylene glycol)-*b*-Poly(L-lactide) diblock copolymers (MW~2000-10,000 Da) (Lot#: 220222RAI-A)



FTIR Analysis: Collected from Nicolet Avator 380 spectrometer with ATR Smart Orbit and analyzed in transmission mode.



GPC-ES Analysis Method: Waters Breeze 2 system with 1 ml/min THF flow across three GPC columns. Detection via refractive index, calibrated against polystyrene standards.

Polymer	M _n (from GPC)	M _w (from GPC)	PDI
PLA-PEG-Mal	20,511	25,524	1.24
PEG-Precursor		2300*	

*- from MFG data

Structure of PLA-PEG-Mal diblock copolymers

