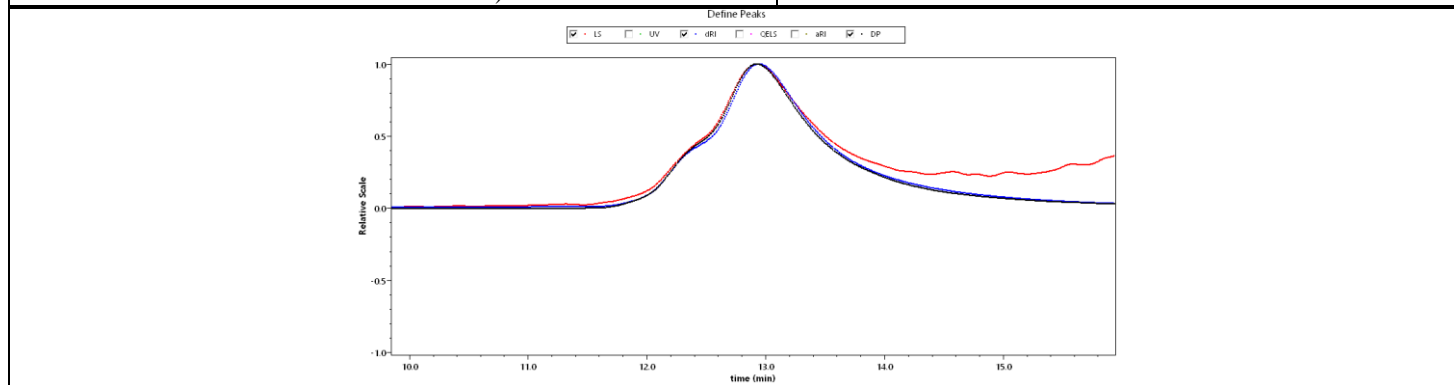
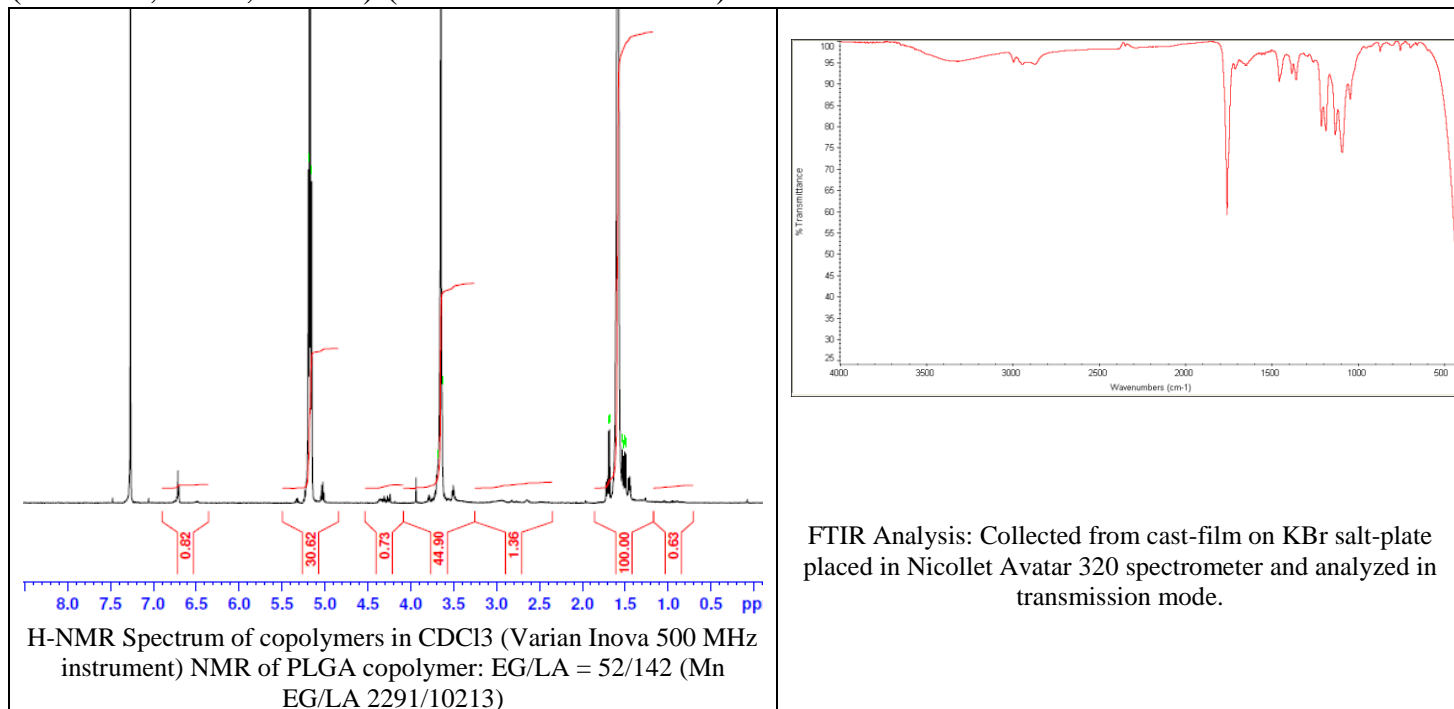


No. AI050

Certificate of Analysis



Product Name: Poly(L-lactide)-b-Poly(ethylene glycol)-Maleimide copolymers
(Mw ~10,000-2,000 Da) (Lot#: 190328BGR-A)



GPC Analysis Method: Agilent 1260 Infinity II HPLC connected to Dawn Heleos II (MALLS), Optilab T-rEX (RI detector) and Viscostar III viscometer operated by Astra 7 software. GPC analysis performed with separation by a linear gradient column (TosohBioscience LLC, TSKgel GMHHR-L, 7.8 mm x 30 cm) at 0.6 ml/min flow of Acetone.

Polymer	M _n (from GPC)	M _w (from GPC)	PDI
PLLA-PEG-Mal	16,760	16,790	1.002
PEG Precursor	2300*		

*- from MFG data

Structure of PLLA-PEG-Mal copolymers

