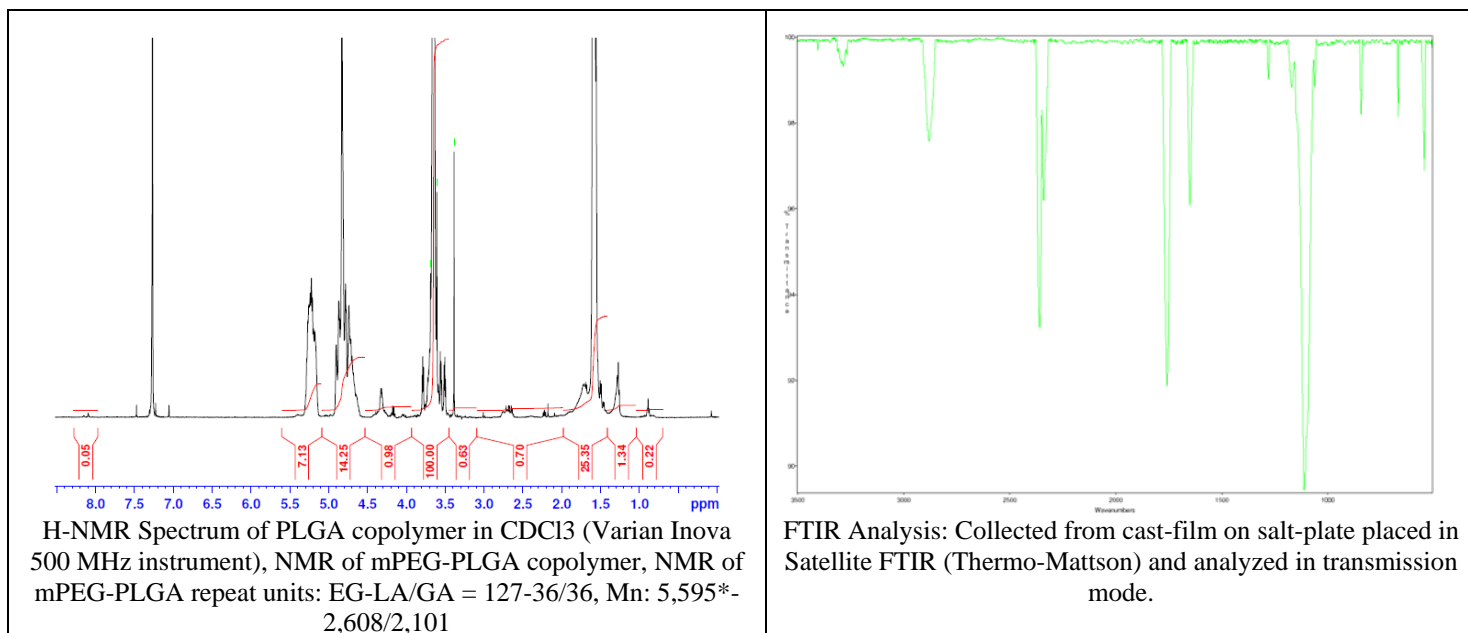


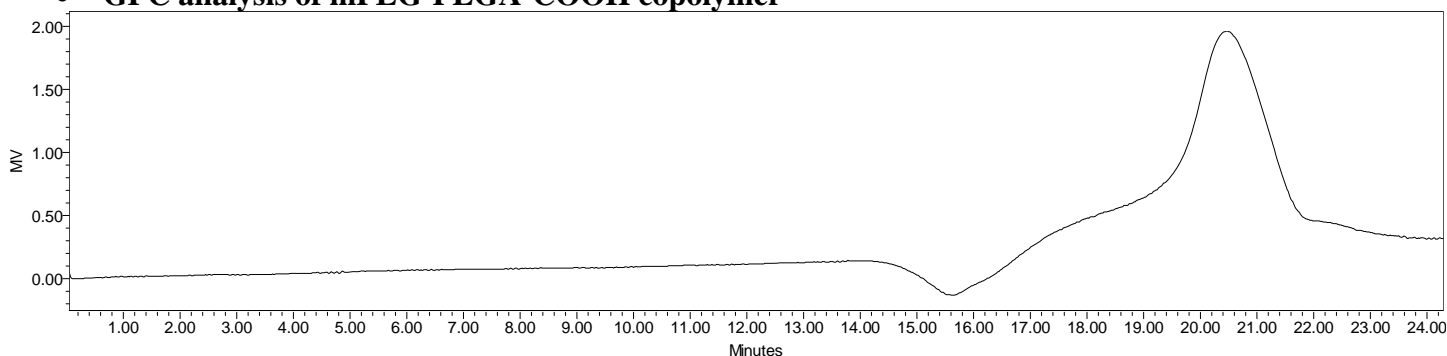
# No. AI042

# Certificate of Analysis

Product Name: Methoxy Poly(ethylene glycol)-b-Poly(lactide-co-glycolide) carboxylic acid  
 (5,000:5,000 Da) (Lot#: 60216FAJ-C)



## • GPC analysis of mPEG-PLGA-COOH copolymer

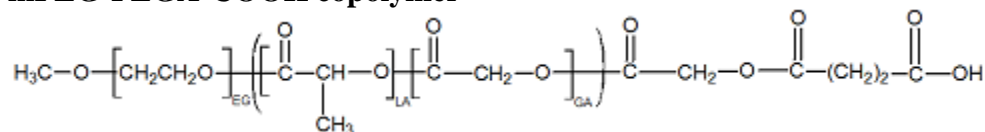


Analysis Method: Waters Breeze 2 system with 1 ml/min DCM flow across two Phenogel 5µm columns and one PLgel Resipore column (Agilent). Detection via refractive index, calibrated against polystyrene standards.

Polymer	Mn (from GPC)	Mw (from GPC)	PDI
mPEG-PLGA-COOH	4,894	13,486	2.76
mPEG precursor*	5,591	5,618	1.01

\*ran against PEG standards

## • Structure of mPEG-PLGA-COOH copolymer



Material provided for research use only. Not for human use.

PolySciTech Division of Akina, Inc. | 3495 Kent Avenue, West Lafayette, IN 47906  
 765-464-0390 | www.polysciotech.com

For research use only.