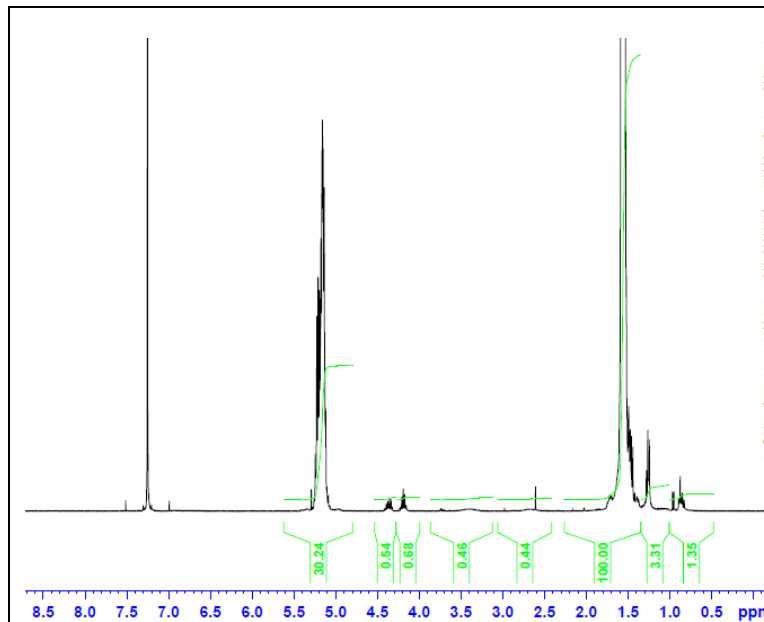


No. AI041

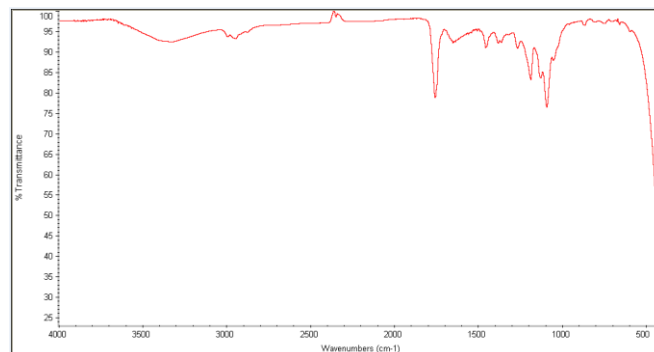
# Certificate of Analysis



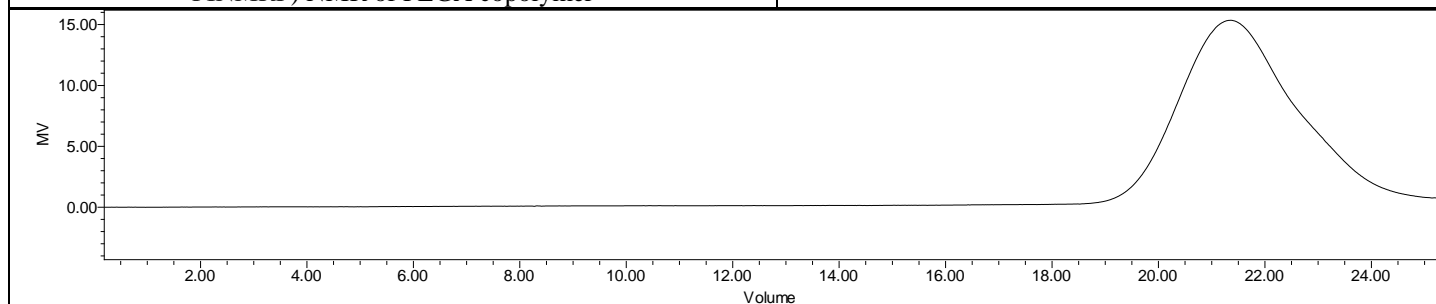
Product Name: Poly(D,L) Lactide-Amine endcap (Mn: 10,000-15,000Da)-diamine (Lot#: 191119RAI-A)



H-NMR Spectrum of copolymers in CDCl<sub>3</sub> (Bruker ≥300 MHz, PINMRF) NMR of PLGA copolymer



FTIR Analysis: Collected from cast-film on KBr salt-plate placed in Nicolet Avatar 320 spectrometer and analyzed in transmission mode.



GPC Analysis Method: Waters Breeze 2 system with 1 ml/min THF flow across three GPC columns. Detection via refractive index, calibrated against polystyrene standards.

Polymer	M <sub>n</sub> (from GPC)	M <sub>w</sub> (from GPC)	PDI
PDLLA-NH <sub>2</sub>	10,070	12,747	1.27

- Structure of P(D,L)LA-NH<sub>2</sub> polymer

