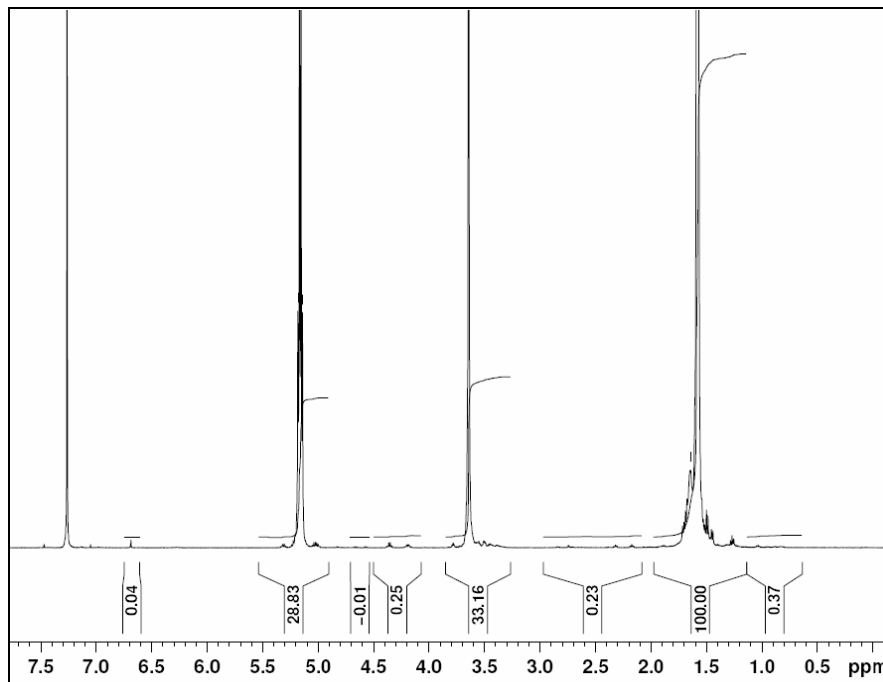


No. AI40

# Certificate of Analysis

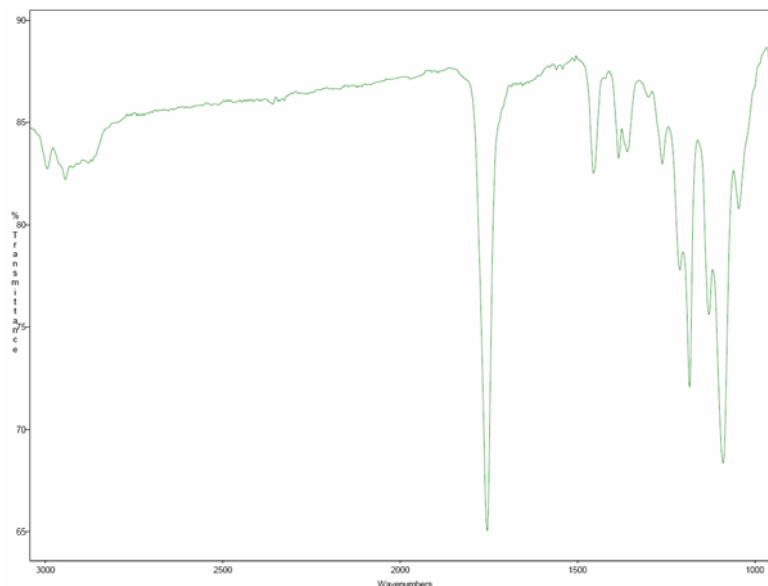
Product Name: Poly(L-lactide)-b-Poly(ethylene glycol)-Maleimide copolymers  
(MW 30,000:5,000 Da) (Lot#: 30515JSG)

- H-NMR analysis of PLLA-PEG-Mal copolymers**



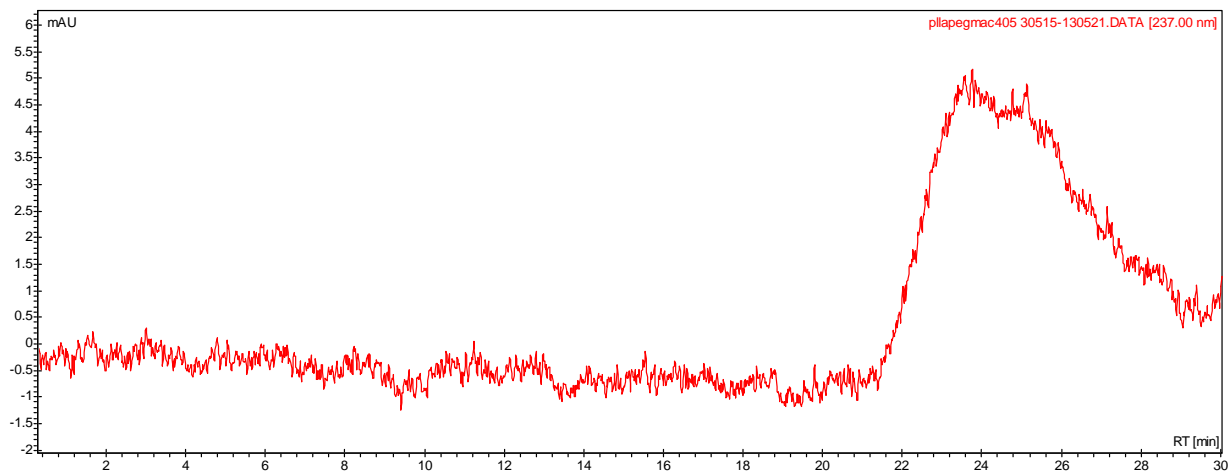
H-NMR Spectrum of PLLA-PEG-Mal copolymers in CDCl<sub>3</sub> (Varian Inova 500 MHz instrument),  
NMR of PLLA-PEG-Mal repeat units: LA-EG = 386-111\* (Mn LA-EG = 27794-4890\*)

- FTIR analysis of PLLA-PEG-Mal copolymers**



Analysis Method: Collected from cast-film on KBR salt-plate placed in Satellite FTIR  
(Thermo-Mattson) and analyzed in transmission mode.

- **GPC analysis of PLLA-PEG-Mal copolymers**



Analysis Method: Varian Prostar system with 1 ml/min DCM flow across three Phenogel 5u columns and one PLgel Resipore column (Agilent). Detection via UV/Vis, calibrated against polystyrene standards

Polymer	Mn (from GPC)	Mw (from GPC)	PDI
PLLA-PEG-Mal	20809	39624	1.90
PEG Precursor	4878*		1.04*

\*-data provided by manufacturer

- **Structure of PLLA-PEG-Mal copolymers**

