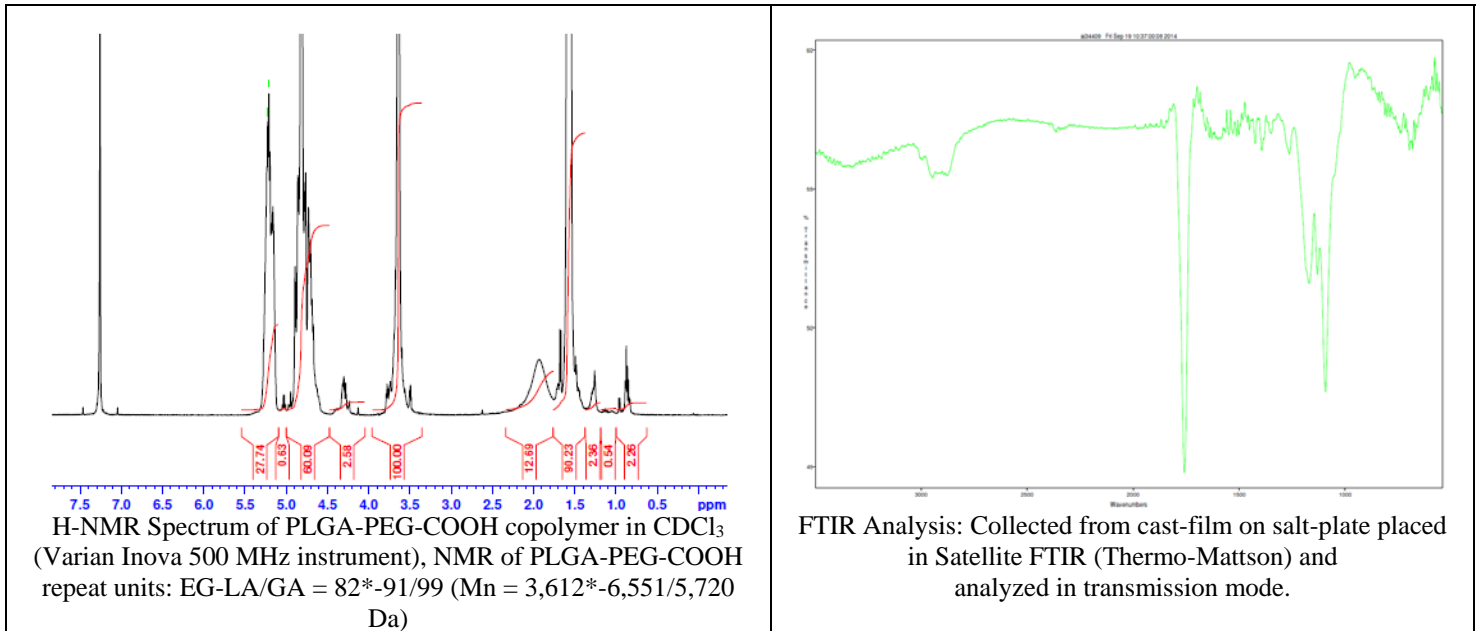
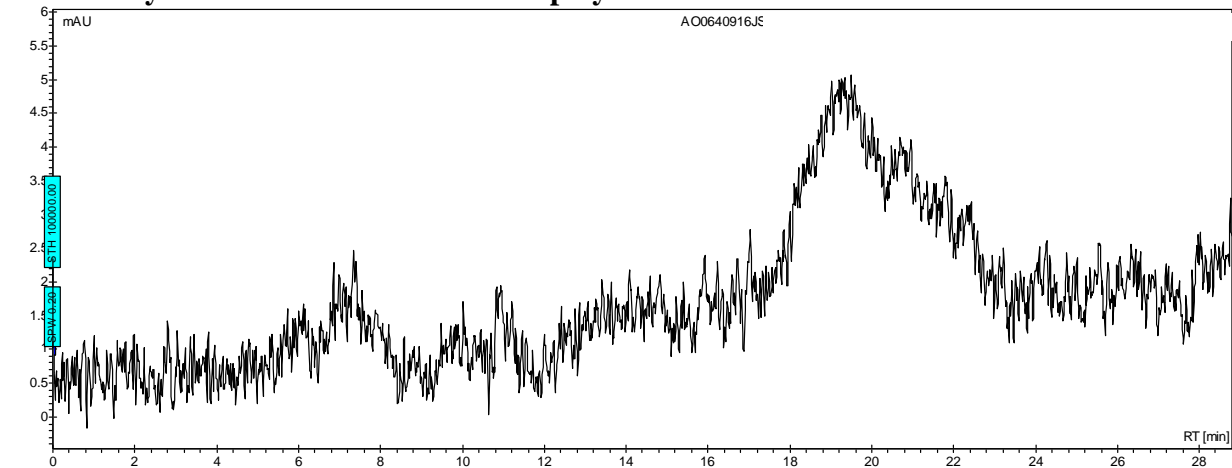


No. AI34 Certificate of Analysis

Product Name: Poly(lactide-co-glycolide)-b-Poly(ethylene glycol)-carboxylic acid endcap
 (~17,000 Da-3,400 Da) (Lot#: 40915JSG)



- GPC analysis of PLGA-PEG-COOH copolymers**



Analysis Method: Varian Prostar system with 1 ml/min DCM flow across two Phenogel 5µm columns and one PLgel Resipore column (Agilent). Detection via UV/Vis, calibrated against polystyrene standards.

Polymer	M _n (from GPC)	M _w (from GPC)	PDI
PLGA-PEG-COOH	9,023	21,710	2.41
HO-PEG-COOH*	Average M _n by GFC – 3,600*		

* - data provided by MFG

- Structure of PLGA-PEG-COOH copolymers**

