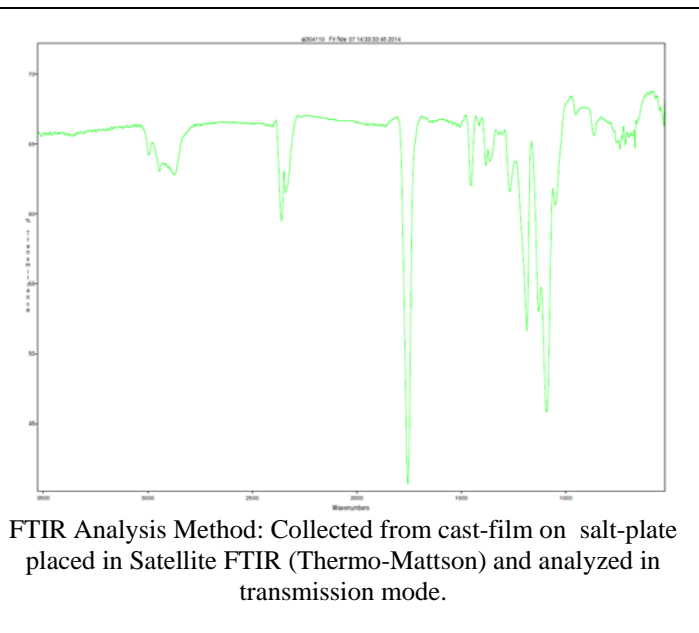
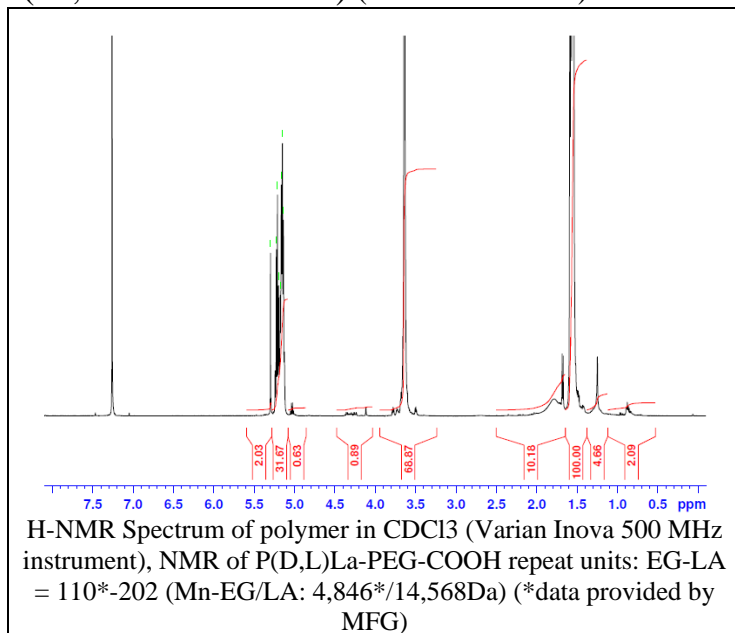


No. AI30

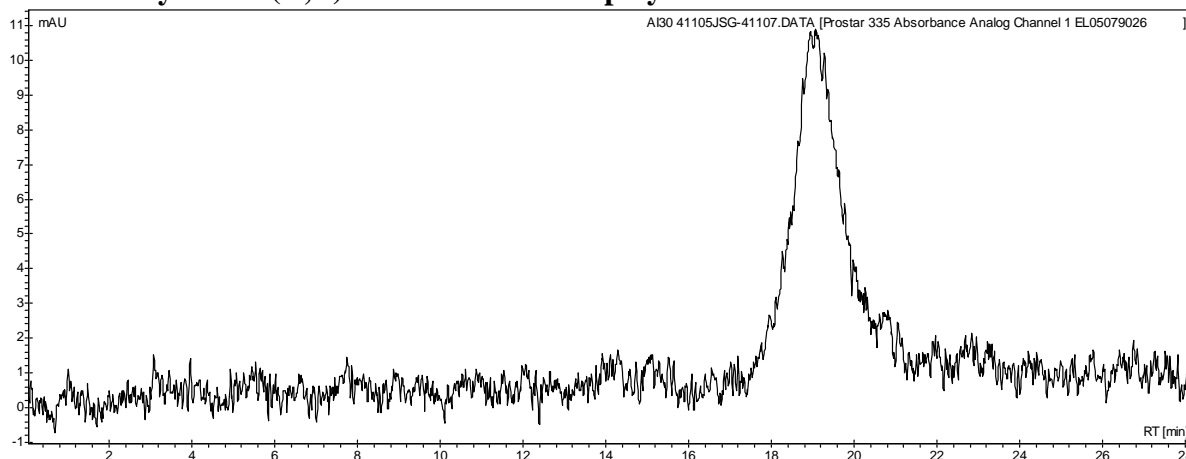
Certificate of Analysis



Product Name: Poly((D,L)lactide)-b-Poly(ethylene glycol)- carboxylic acid copolymers
(16,000Da – 5000Da) (Lot#: 41105JSG)



• GPC analysis of P(D,L)La-PEG-COOH copolymers

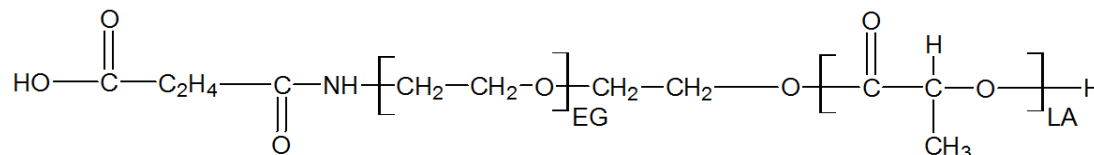


Analysis Method: Varian Prostar system with 1 ml/min DCM flow across two Phenogel 5 μ m columns and one PLgel Resipore column (Agilent). Detection via UV/Vis, calibrated against polystyrene standards.

Polymer	Mn (from GPC)	Mw (from GPC)	PDI
P(D,L)La-PEG-COOH	16,565	22,401	1.35
HO-PEG-COOH*	Average Mw by GFC - 4600*		

* - data provided by MFG

• Structure of P(D,L)La-PEG-COOH copolymers



Material provided for research use only. Not for human use.

PolySciTech Division of Akina, Inc. | 3495 Kent Avenue, West Lafayette, IN 47906

765-464-0390 | www.polysciotech.com

For research use only.