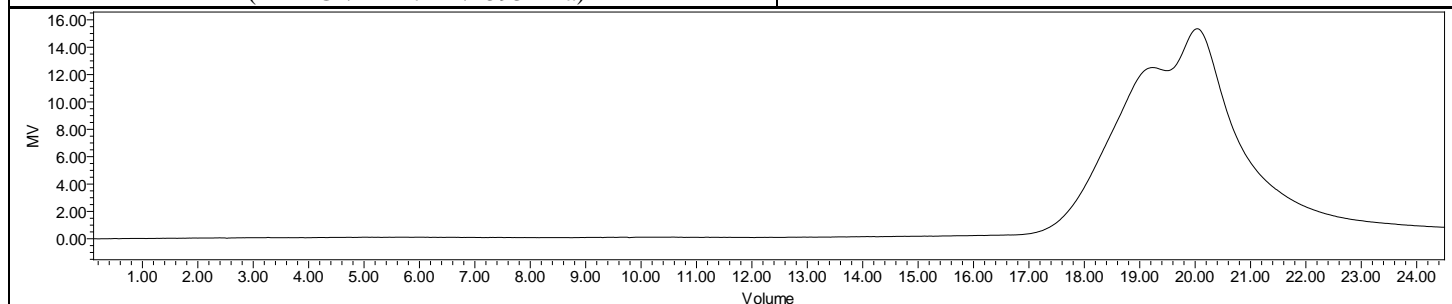
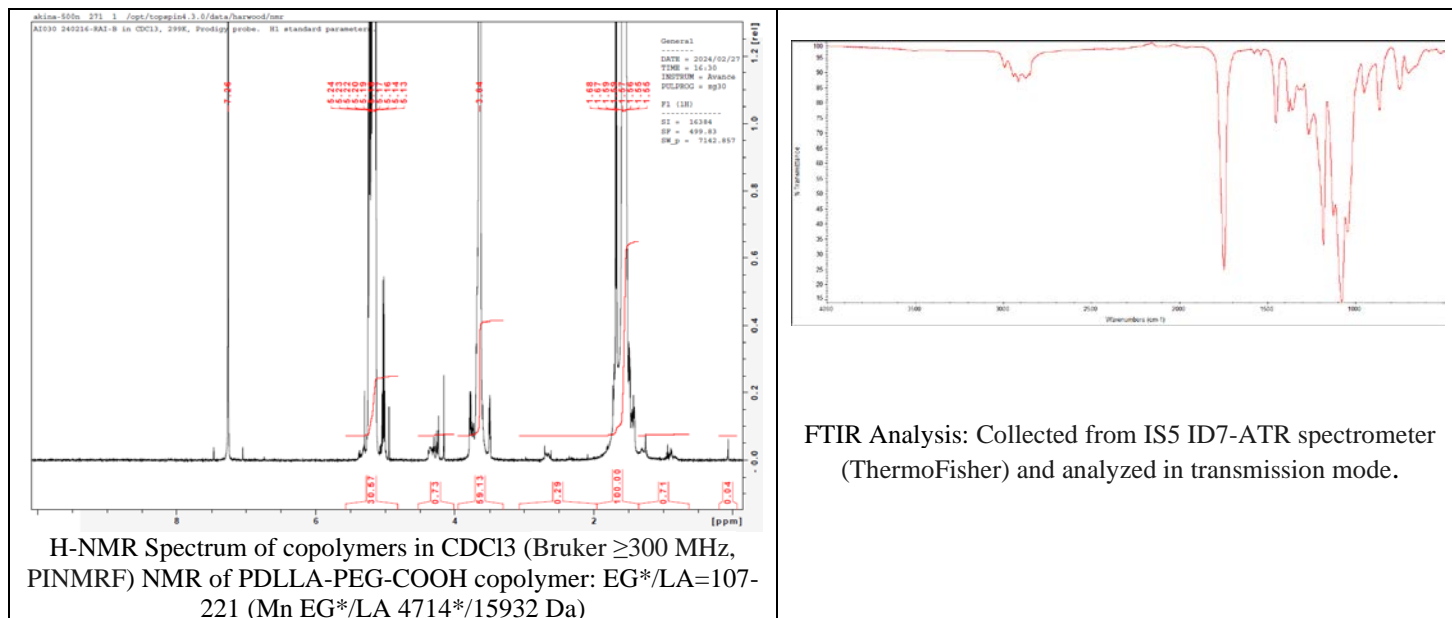


No. AI030

Certificate of Analysis



Product Name: Poly(D,L-lactide)-b-poly(ethylene glycol)-carboxylic acid
(16,000:5,000 Da) (Lot#: 240216RAI-B)

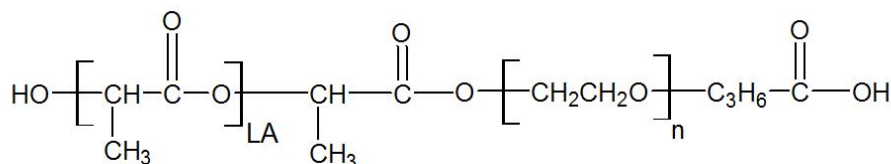


GPC-ES Analysis Method: Waters Breeze 2 system with 1 ml/min THF flow across three GPC columns. Detection via refractive index, calibrated against polystyrene standards.

Polymer	M _n (from GPC)	M _w (from GPC)	PDI
PDLLA-PEG-COOH	26,558	37,741	1.42
PEG-Precursor*	M _w = 4700* Da		

*- from MFG data

• Structure of P(DL)LA-PEG-COOH copolymers



Approved By:
Amie Tyler
Quality Manager