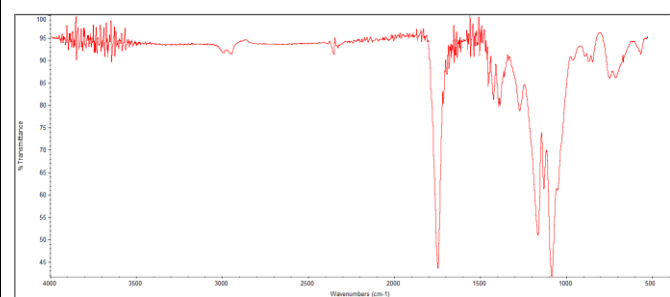
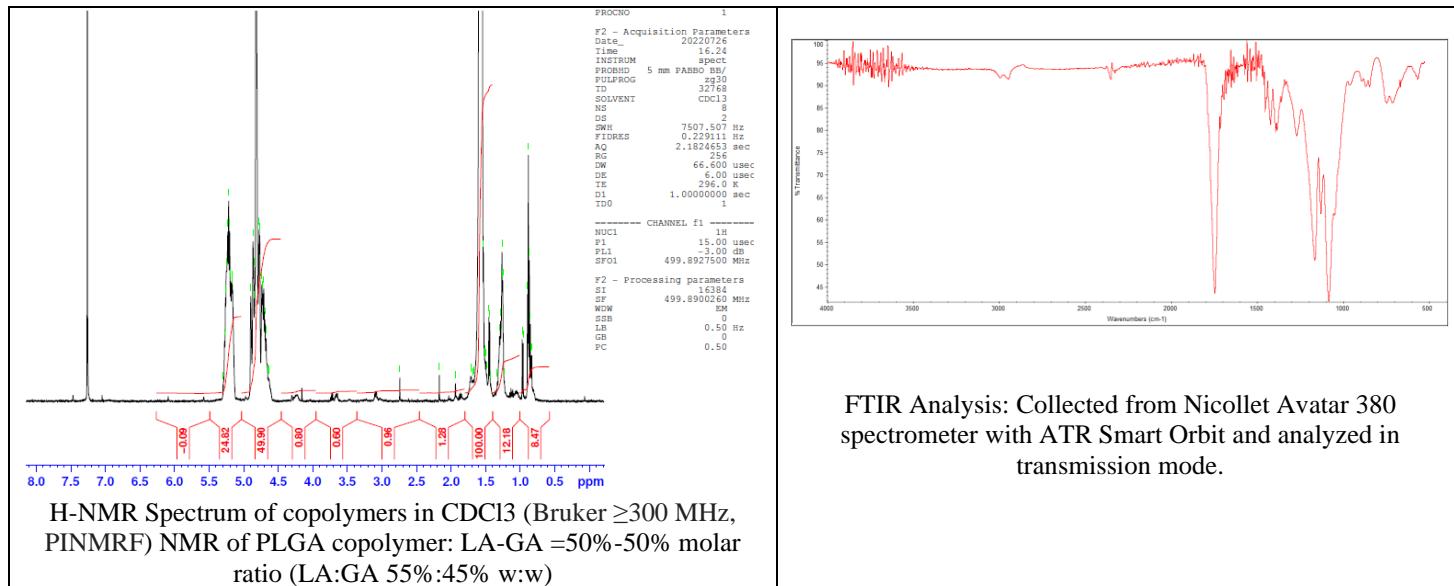


No. AI025

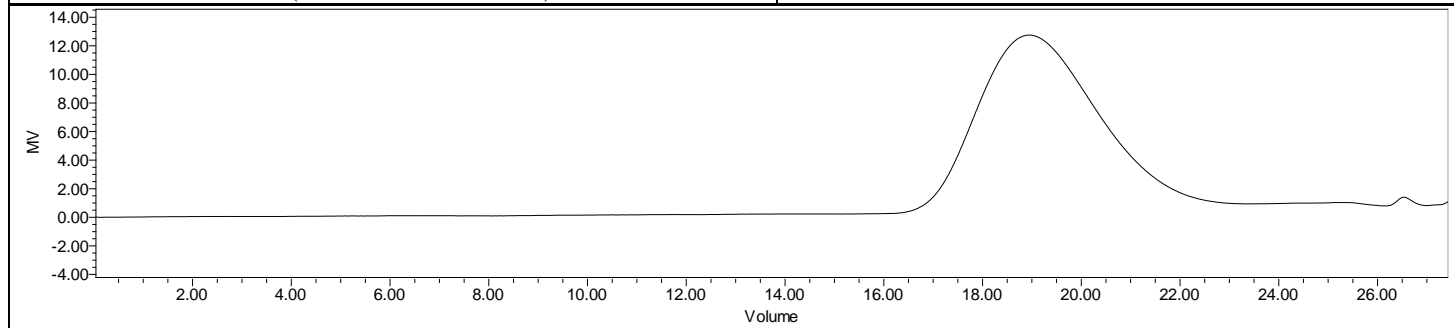
Certificate of Analysis



Product Name: Poly(lactide-co-glycolide)-Cysteine Ethyl Ester (Mn: 20,000-40,000 Da) (Thiol endcap) (Lot#: 220718ERG-A)



FTIR Analysis: Collected from Nicolet Avator 380 spectrometer with ATR Smart Orbit and analyzed in transmission mode.



GPC-ES Analysis Method: Waters Breeze 2 system with 1 ml/min THF flow across three GPC columns. Detection via refractive index, calibrated against polystyrene standards.

Polymer	M _n (from GPC)	M _w (from GPC)	PDI
PLGA-SH	30,306	53,062	1.75

*- from MFG data

Structure of PLGA-SH copolymers

