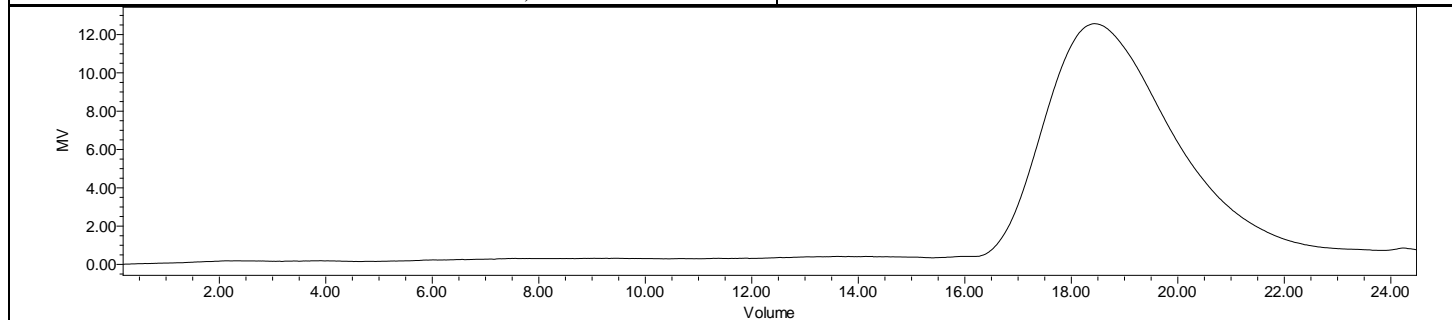
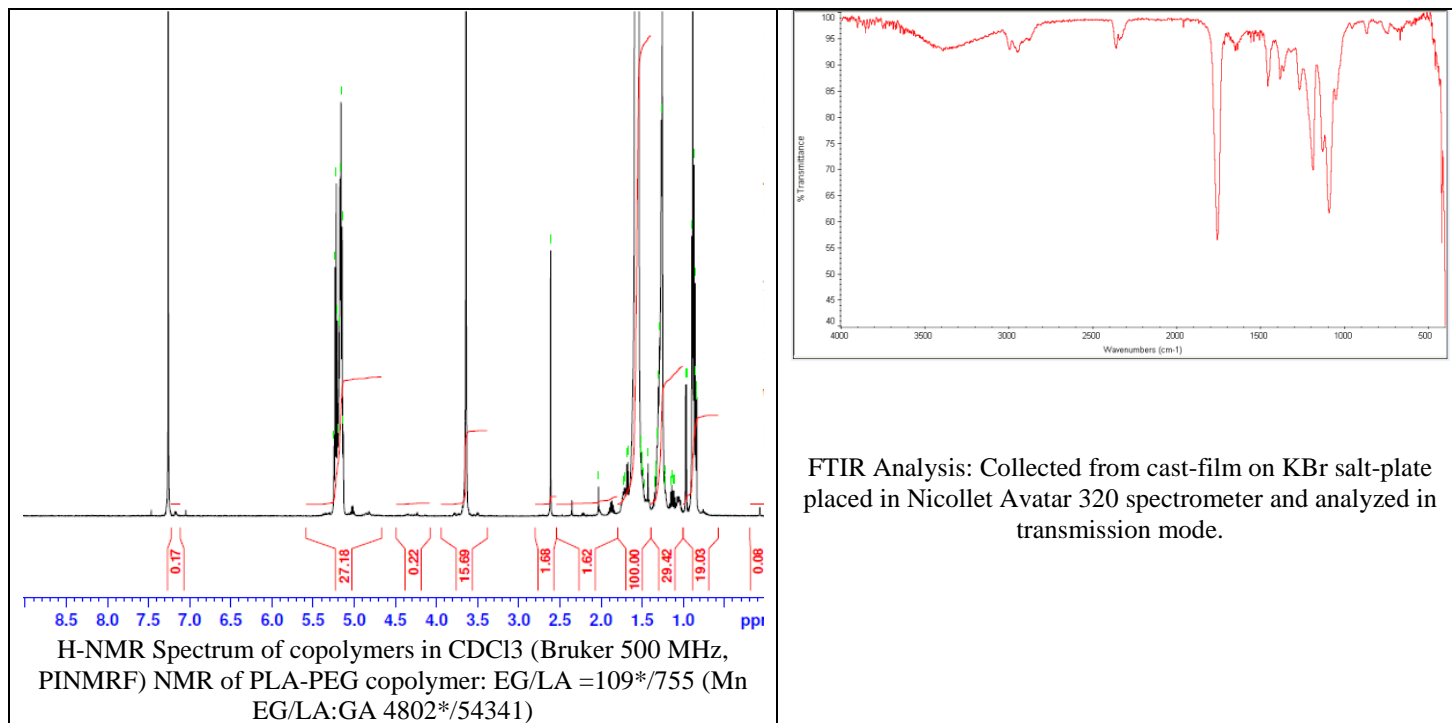


No. AI023

Certificate of Analysis



Product Name: Poly(D,L-lactide)-b-Poly(ethylene glycol)- carboxylic acid copolymers (55,000-5,000 Da) (Lot#: 190606JHS-A)



GPC Analysis Method: Waters Breeze 2 system with 1 ml/min THF flow across three GPC columns. Detection via refractive index, calibrated against polystyrene standards.

Polymer	M _n (from GPC)	M _w (from GPC)	PDI
PLGA-PEG-COOH	54,213	74,084	1.37
PEG precursor*		4800*	

*- from MFG data

- Structure of PDLLA-PEG-COOH copolymers

