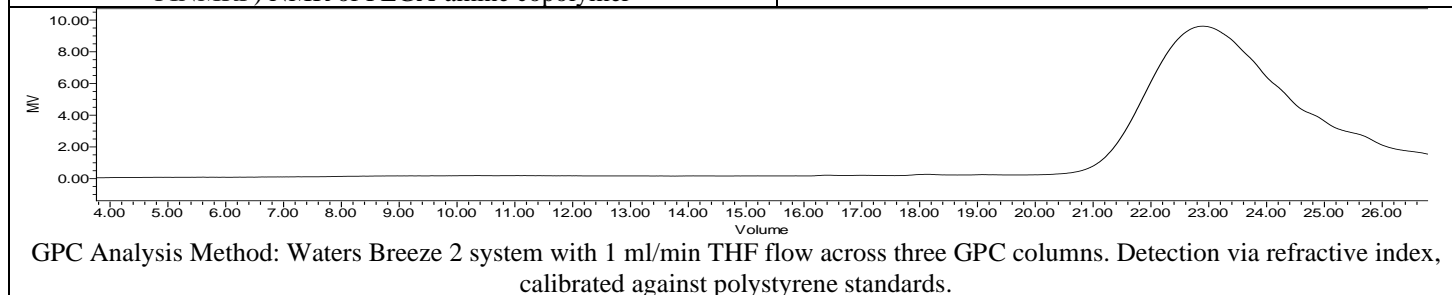
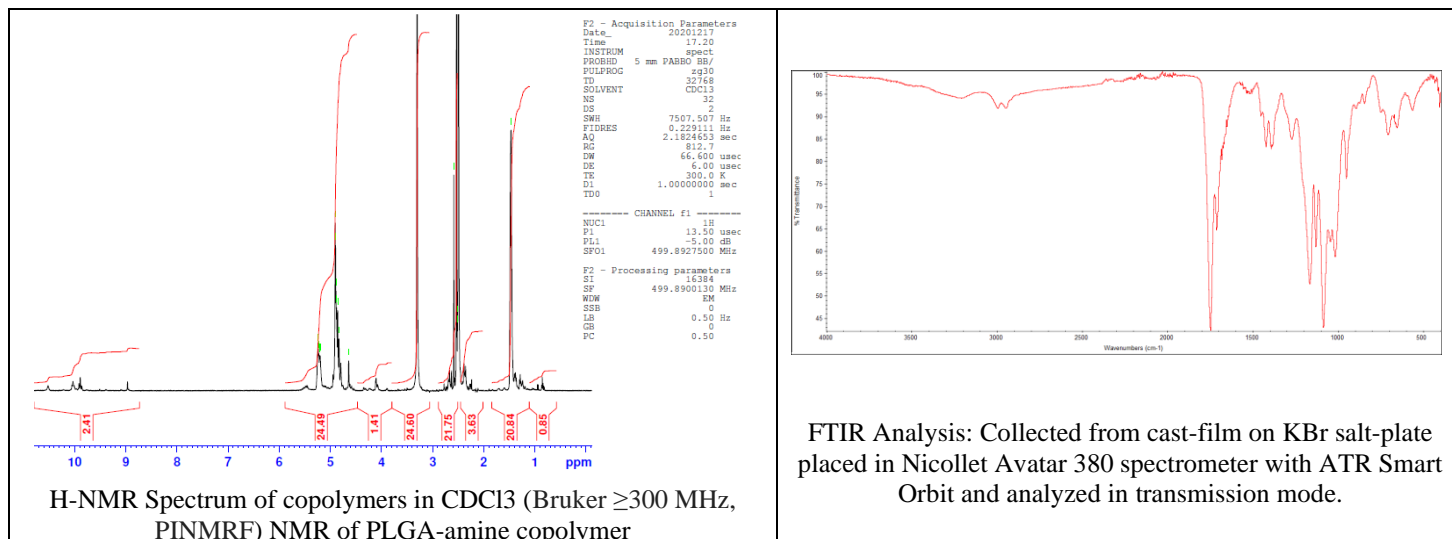


No. AI021

Certificate of Analysis



Product Name: Poly(lactide-co-glycolide) diamine (succinic dihydrazide)
endcap (Mn: 1,000 - 5,000 Da) (Lot # 201203RAI-A)



Polymer	M _n (from GPC)	M _w (from GPC)	PDI	
PLGA-(NH ₂) ₂	3158	3936	1.25	

Inherent Viscosity (IV) analysis

Polymer dissolved in DMSO and viscosity tested using a RheoSense Micro-Visc viscometer at 30°C. Average of 3 times taken and viscosity compared to pure DMSO at 30°C to obtain inherent viscosity. Value shown +/- standard deviation.

Polymer	Inherent Viscosity (dL/g)
H2N-PLGA-NH ₂	0.044 ± 0.002

Structure of H2N-PLGA-NH₂ polymer

